

Product datasheet for **TA505107**

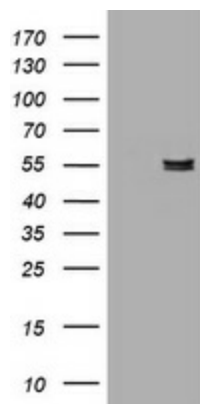
AMY2B Mouse Monoclonal Antibody [Clone ID: OTI4B5]

Product data:

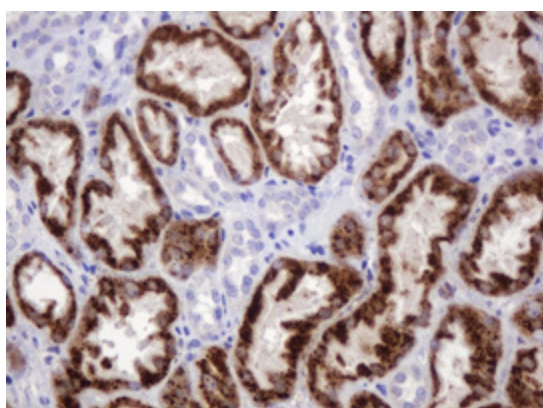
| | |
|--------------------------------|--|
| Product Type: | Primary Antibodies |
| Clone Name: | OTI4B5 |
| Applications: | IHC, WB |
| Recommend Dilution: | WB 1:2000, IHC 1:150 |
| Reactivity: | Human |
| Host: | Mouse |
| Isotype: | IgG1 |
| Clonality: | Monoclonal |
| Immunogen: | Full length human recombinant protein of human AMY2B (NP_066188) produced in HEK293T cell. |
| Formulation: | PBS (PH 7.3) containing 1% BSA, 50% glycerol and 0.02% sodium azide. |
| Concentration: | 1 mg/ml |
| Purification: | Purified from mouse ascites fluids or tissue culture supernatant by affinity chromatography (protein A/G) |
| Predicted Protein Size: | 55.8 kDa |
| Gene Name: | amylase alpha 2B (pancreatic) |
| Database Link: | NP_066188 Entrez Gene 280 Human |
| Background: | Amylases are secreted proteins that hydrolyze 1,4-alpha-glucoside bonds in oligosaccharides and polysaccharides, and thus catalyze the first step in digestion of dietary starch and glycogen. The human genome has a cluster of several amylase genes that are expressed at high levels in either salivary gland or pancreas. This gene encodes an amylase isoenzyme produced by the pancreas. [provided by RefSeq, Jul 2008] |
| Synonyms: | AMY2; AMY3; HXA |
| Protein Families: | Secreted Protein |
| Protein Pathways: | Metabolic pathways, Starch and sucrose metabolism |



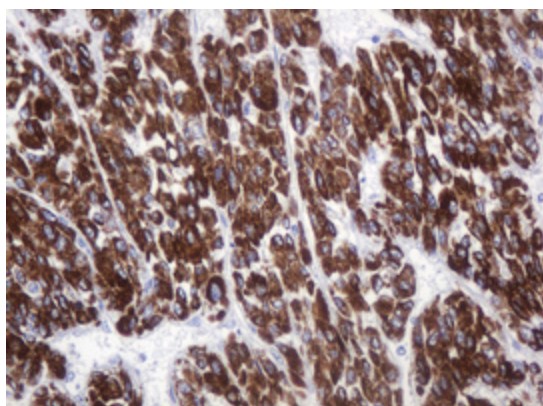
[View online »](#)

Product images:

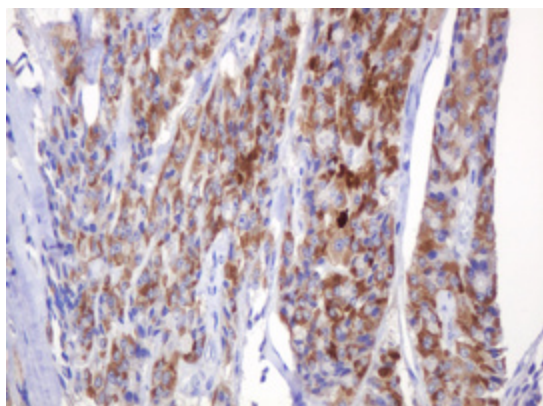
HEK293T cells were transfected with the pCMV6-ENTRY control (Left lane) or pCMV6-ENTRY AMY2B ([RC203812], Right lane) cDNA for 48 hrs and lysed. Equivalent amounts of cell lysates (5 ug per lane) were separated by SDS-PAGE and immunoblotted with anti-AMY2B. Positive lysates [LY402818] (100ug) and [LC402818] (20ug) can be purchased separately from OriGene.



Immunohistochemical staining of paraffin-embedded Human Kidney tissue within the normal limits using anti-AMY2B mouse monoclonal antibody. (Heat-induced epitope retrieval by 10mM citric buffer, pH6.0, 120°C for 3min, TA505107)



Immunohistochemical staining of paraffin-embedded Carcinoma of Human liver tissue using anti-AMY2B mouse monoclonal antibody. (Heat-induced epitope retrieval by 10mM citric buffer, pH6.0, 120°C for 3min, TA505107)



Immunohistochemical staining of paraffin-embedded Carcinoma of Human thyroid tissue using anti-AMY2B mouse monoclonal antibody. (Heat-induced epitope retrieval by 10mM citric buffer, pH6.0, 120°C for 3min, TA505107)