

Product datasheet for TA504852

DPH2 Mouse Monoclonal Antibody [Clone ID: OTI4E7]

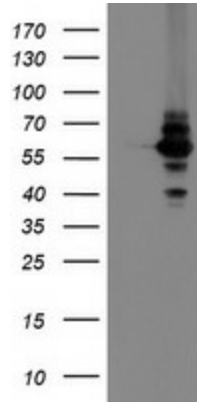
Product data:

Product Type:	Primary Antibodies
Clone Name:	OTI4E7
Applications:	FC, IHC, WB
Recommend Dilution:	WB 1:500~2000, IHC 1:150, FLOW 1:100
Reactivity:	Human, Monkey, Mouse, Rat, Dog
Host:	Mouse
Isotype:	IgG1
Clonality:	Monoclonal
Immunogen:	Full length human recombinant protein of human DPH2(NP_001375) produced in HEK293T cell.
Formulation:	PBS (PH 7.3) containing 1% BSA, 50% glycerol and 0.02% sodium azide.
Concentration:	1 mg/ml
Purification:	Purified from mouse ascites fluids or tissue culture supernatant by affinity chromatography (protein A/G)
Predicted Protein Size:	51.9 kDa
Gene Name:	diphthamide biosynthesis 2
Database Link:	NP_001375 Entrez Gene 67728 MouseEntrez Gene 298452 RatEntrez Gene 475387 DogEntrez Gene 702123 MonkeyEntrez Gene 1802 Human
Background:	This gene is one of two human genes similar to the yeast gene dph2. The yeast gene was identified by its ability to complement a diphthamide mutant strain, and thus probably functions in diphthamide biosynthesis. Diphthamide is a post-translationally modified histidine residue present in elongation factor 2 (EF2) that is the target of diphtheria toxin ADP-ribosylation. Two transcript variants encoding different isoforms have been found for this gene. [provided by RefSeq, Jul 2008]
Synonyms:	DPH2L2

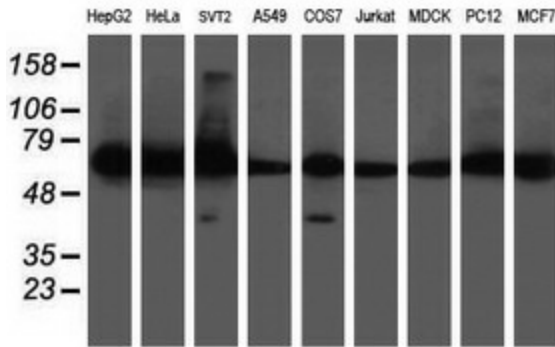


[View online »](#)

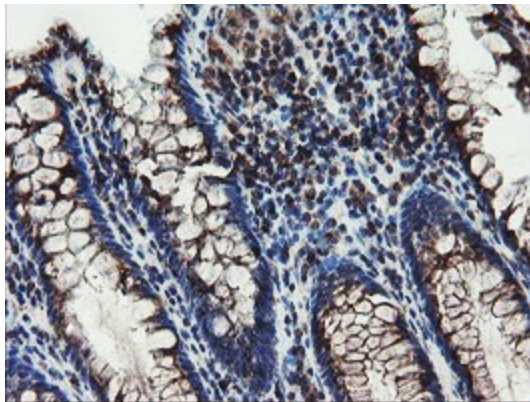
Product images:



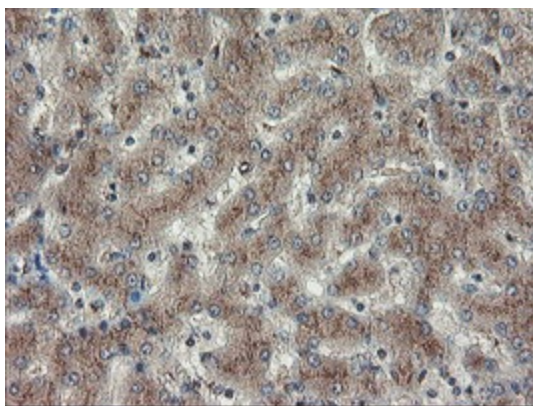
HEK293T cells were transfected with the pCMV6-ENTRY control (Left lane) or pCMV6-ENTRY DPH2 ([RC201382], Right lane) cDNA for 48 hrs and lysed. Equivalent amounts of cell lysates (5 ug per lane) were separated by SDS-PAGE and immunoblotted with anti-DPH2. Positive lysates [LY419990] (100ug) and [LC419990] (20ug) can be purchased separately from OriGene.



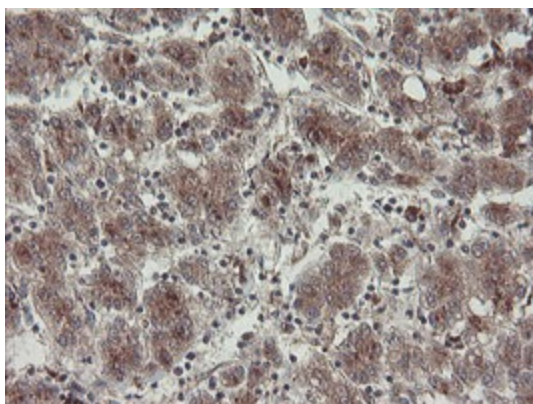
Western blot analysis of extracts (35ug) from 9 different cell lines by using anti-DPH2 monoclonal antibody (HepG2: human; HeLa: human; SVT2: mouse; A549: human; COS7: monkey; Jurkat: human; MDCK: canine; PC12: rat; MCF7: human).



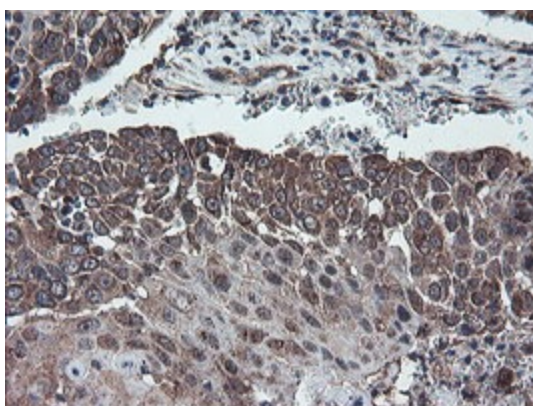
Immunohistochemical staining of paraffin-embedded Human colon tissue within the normal limits using anti-DPH2 mouse monoclonal antibody. (Heat-induced epitope retrieval by 10mM citric buffer, pH6.0, 100°C for 10min, TA504852)



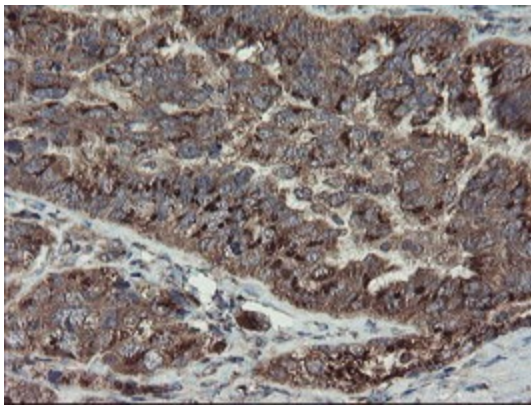
Immunohistochemical staining of paraffin-embedded Human liver tissue within the normal limits using anti-DPH2 mouse monoclonal antibody. (Heat-induced epitope retrieval by 10mM citric buffer, pH6.0, 100°C for 10min, TA504852)



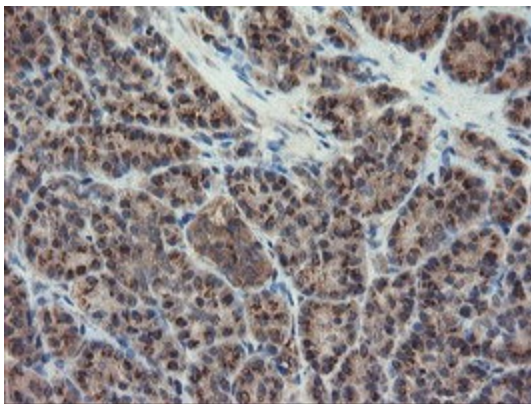
Immunohistochemical staining of paraffin-embedded Carcinoma of Human liver tissue using anti-DPH2 mouse monoclonal antibody. (Heat-induced epitope retrieval by 10mM citric buffer, pH6.0, 100°C for 10min, TA504852)



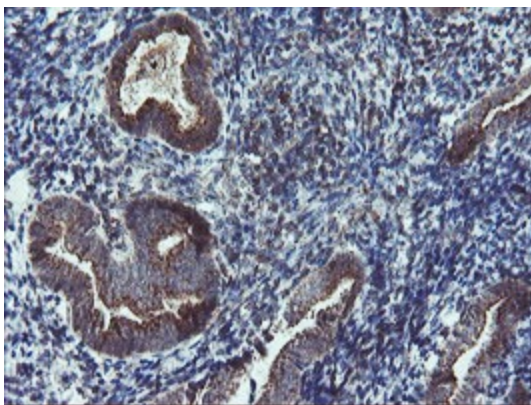
Immunohistochemical staining of paraffin-embedded Carcinoma of Human lung tissue using anti-DPH2 mouse monoclonal antibody. (Heat-induced epitope retrieval by 10mM citric buffer, pH6.0, 100°C for 10min, TA504852)



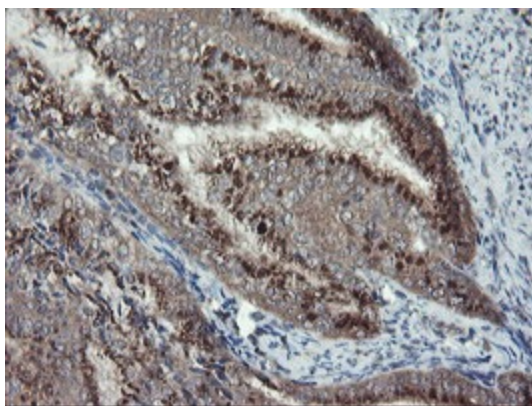
Immunohistochemical staining of paraffin-embedded Adenocarcinoma of Human ovary tissue using anti-DPH2 mouse monoclonal antibody. (Heat-induced epitope retrieval by 10mM citric buffer, pH6.0, 100°C for 10min, TA504852)



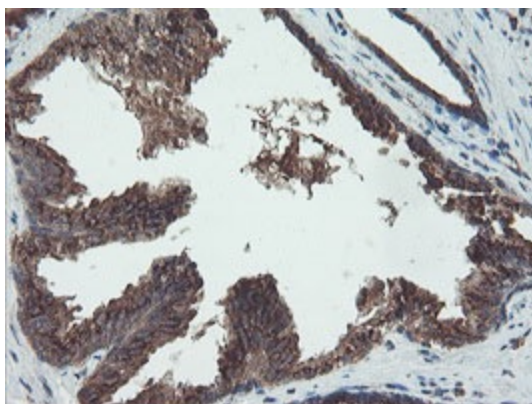
Immunohistochemical staining of paraffin-embedded Human pancreas tissue within the normal limits using anti-DPH2 mouse monoclonal antibody. (Heat-induced epitope retrieval by 10mM citric buffer, pH6.0, 100°C for 10min, TA504852)



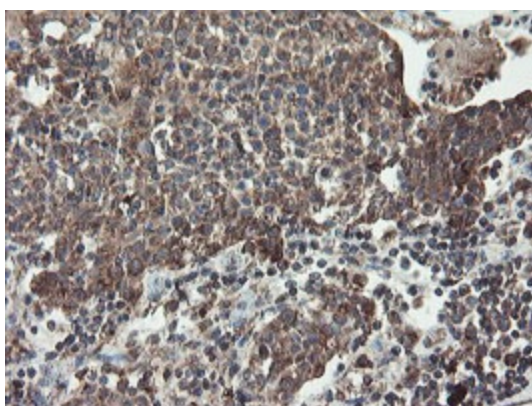
Immunohistochemical staining of paraffin-embedded Human endometrium tissue within the normal limits using anti-DPH2 mouse monoclonal antibody. (Heat-induced epitope retrieval by 10mM citric buffer, pH6.0, 100°C for 10min, TA504852)



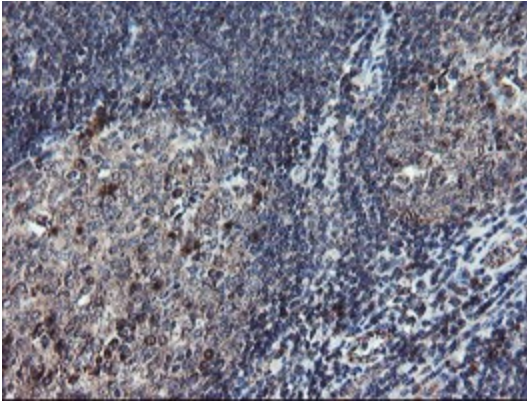
Immunohistochemical staining of paraffin-embedded Adenocarcinoma of Human endometrium tissue using anti-DPH2 mouse monoclonal antibody. (Heat-induced epitope retrieval by 10mM citric buffer, pH6.0, 100°C for 10min, TA504852)



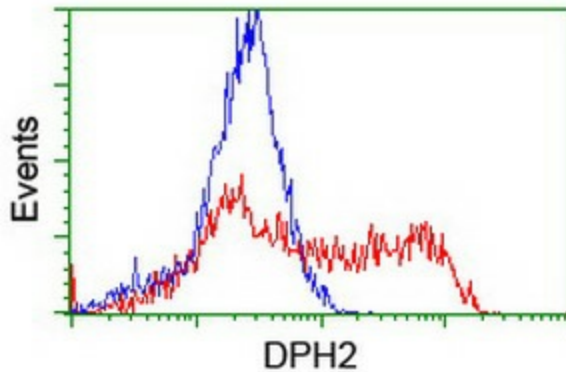
Immunohistochemical staining of paraffin-embedded Human prostate tissue within the normal limits using anti-DPH2 mouse monoclonal antibody. (Heat-induced epitope retrieval by 10mM citric buffer, pH6.0, 100°C for 10min, TA504852)



Immunohistochemical staining of paraffin-embedded Carcinoma of Human bladder tissue using anti-DPH2 mouse monoclonal antibody. (Heat-induced epitope retrieval by 10mM citric buffer, pH6.0, 100°C for 10min, TA504852)



Immunohistochemical staining of paraffin-embedded Human tonsil within the normal limits using anti-DPH2 mouse monoclonal antibody. (Heat-induced epitope retrieval by 10mM citric buffer, pH6.0, 100°C for 10min, TA504852)



HEK293T cells transfected with either [RC201382] overexpress plasmid (Red) or empty vector control plasmid (Blue) were immunostained by anti-DPH2 antibody (TA504852), and then analyzed by flow cytometry.