

## Product datasheet for TA504659

### CRYZL1 Mouse Monoclonal Antibody [Clone ID: OTI2F9]

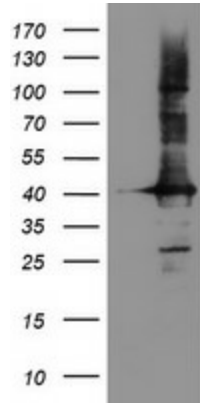
#### Product data:

Product Type:	Primary Antibodies
Clone Name:	OTI2F9
Applications:	FC, IF, IHC, WB
Recommend Dilution:	WB 1:500~2000, IHC 1:150, IF 1:100, FLOW 1:100
Reactivity:	Human, Monkey
Host:	Mouse
Isotype:	IgG2b
Clonality:	Monoclonal
Immunogen:	Full length human recombinant protein of human CRYZL1(NP_665857) produced in HEK293T cell.
Formulation:	PBS (PH 7.3) containing 1% BSA, 50% glycerol and 0.02% sodium azide.
Concentration:	1.08 mg/ml
Purification:	Purified from mouse ascites fluids or tissue culture supernatant by affinity chromatography (protein A/G)
Predicted Protein Size:	38.5 kDa
Gene Name:	crystallin zeta like 1
Database Link:	<a href="#">NP_665857 Entrez Gene</a> <a href="#">698723 Monkey Entrez Gene</a> <a href="#">9946 Human</a>
Background:	This gene encodes a protein that has sequence similarity to zeta crystallin, also known as quinone oxidoreductase. This zeta crystallin-like protein also contains an NAD(P)H binding site. Alternatively spliced transcript variants have been observed but their full-length nature has not been completely determined. [provided by RefSeq]. COMPLETENESS: complete on the 3' end.
Synonyms:	4P11; QOH-1
Protein Families:	Druggable Genome

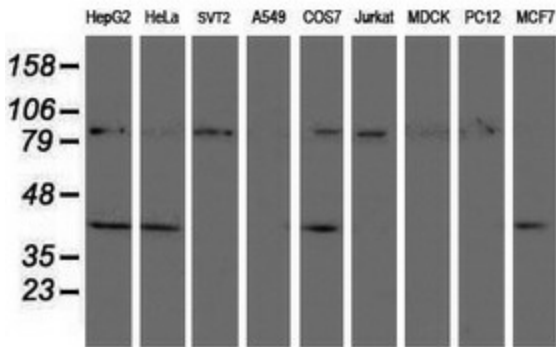


[View online »](#)

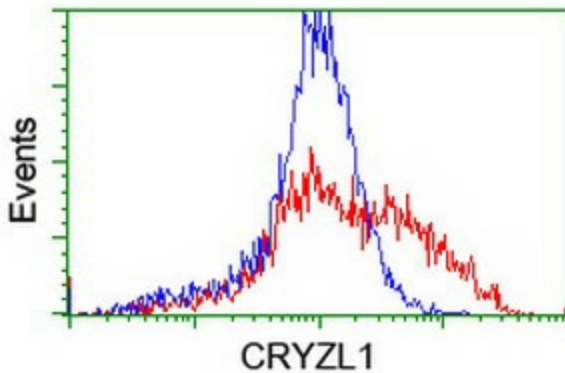
Product images:



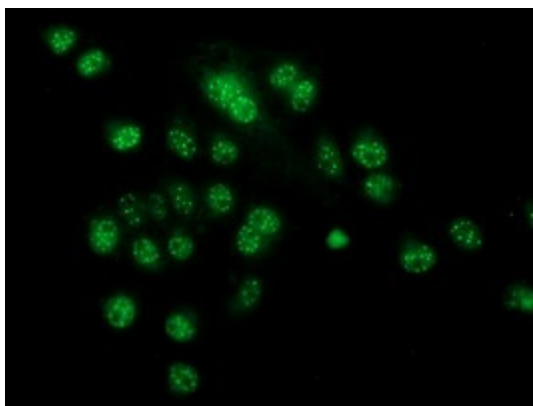
HEK293T cells were transfected with the pCMV6-ENTRY control (Left lane) or pCMV6-ENTRY CRYZL1 ([RC205953], Right lane) cDNA for 48 hrs and lysed. Equivalent amounts of cell lysates (5 ug per lane) were separated by SDS-PAGE and immunoblotted with anti-CRYZL1. Positive lysates [LY407853] (100ug) and [LC407853] (20ug) can be purchased separately from OriGene.



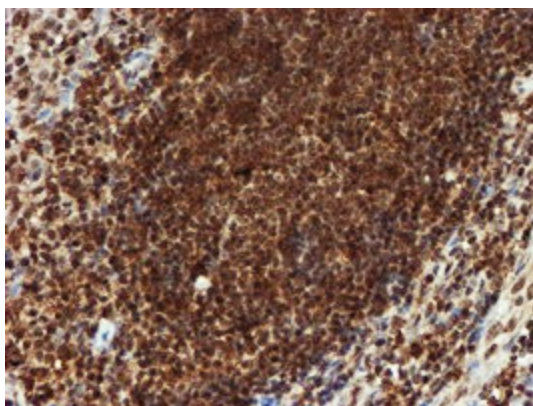
Western blot analysis of extracts (35ug) from 9 different cell lines by using anti-CRYZL1 monoclonal antibody (HepG2: human; HeLa: human; SVT2: mouse; A549: human; COS7: monkey; Jurkat: human; MDCK: canine; PC12: rat; MCF7: human).



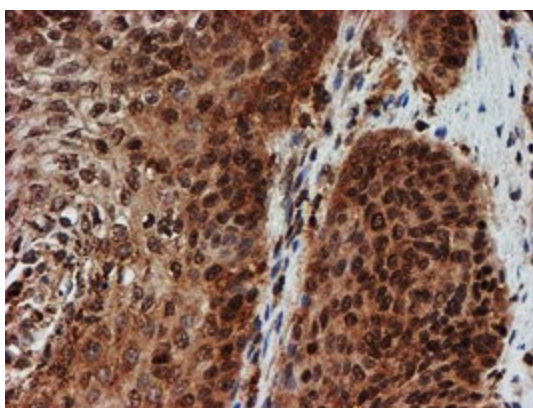
HEK293T cells transfected with either [RC205953] overexpress plasmid (Red) or empty vector control plasmid (Blue) were immunostained by anti-CRYZL1 antibody (TA504659), and then analyzed by flow cytometry.



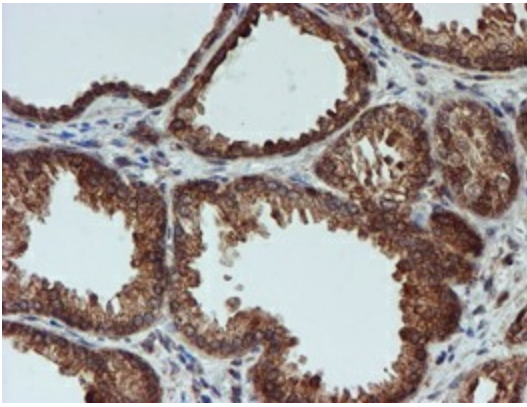
Anti-CRYZL1 mouse monoclonal antibody (TA504659) immunofluorescent staining of COS7 cells transiently transfected by pCMV6-ENTRY CRYZL1 ([RC205953]).



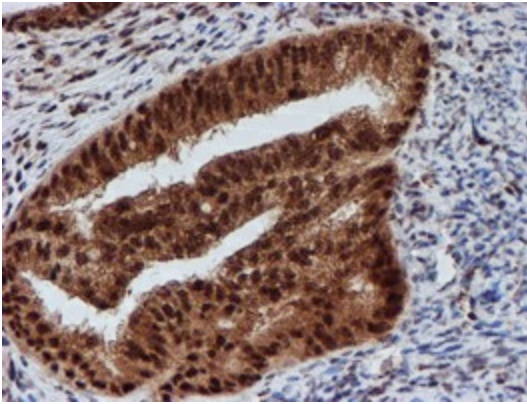
Immunohistochemical staining of paraffin-embedded Human tonsil within the normal limits using anti-CRYZL1 mouse monoclonal antibody. (Heat-induced epitope retrieval by 10mM citric buffer, pH6.0, 100°C for 10min, TA504659)



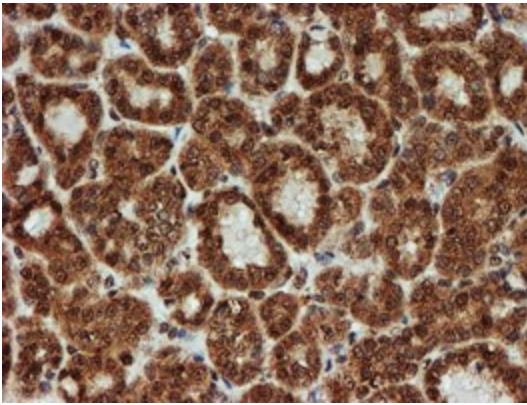
Immunohistochemical staining of paraffin-embedded Carcinoma of Human bladder tissue using anti-CRYZL1 mouse monoclonal antibody. (Heat-induced epitope retrieval by 10mM citric buffer, pH6.0, 100°C for 10min, TA504659)



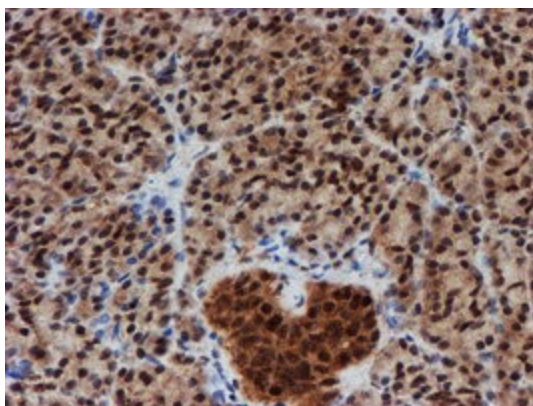
Immunohistochemical staining of paraffin-embedded Human prostate tissue within the normal limits using anti-CRYZL1 mouse monoclonal antibody. (Heat-induced epitope retrieval by 10mM citric buffer, pH6.0, 100°C for 10min, TA504659)



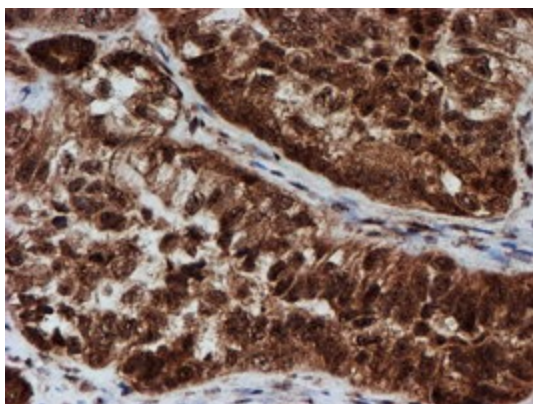
Immunohistochemical staining of paraffin-embedded Adenocarcinoma of Human endometrium tissue using anti-CRYZL1 mouse monoclonal antibody. (Heat-induced epitope retrieval by 10mM citric buffer, pH6.0, 100°C for 10min, TA504659)



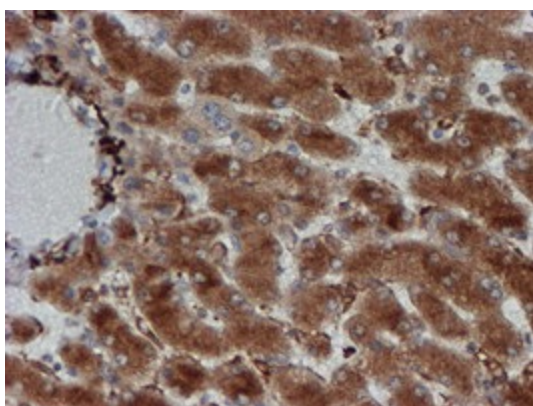
Immunohistochemical staining of paraffin-embedded Carcinoma of Human thyroid tissue using anti-CRYZL1 mouse monoclonal antibody. (Heat-induced epitope retrieval by 10mM citric buffer, pH6.0, 100°C for 10min, TA504659)



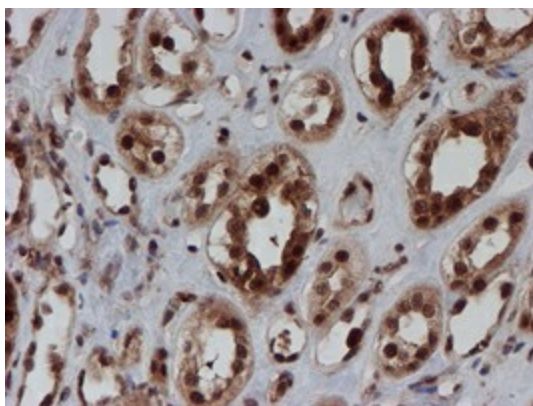
Immunohistochemical staining of paraffin-embedded Human pancreas tissue within the normal limits using anti-CRYZL1 mouse monoclonal antibody. (Heat-induced epitope retrieval by 10mM citric buffer, pH6.0, 100°C for 10min, TA504659)



Immunohistochemical staining of paraffin-embedded Adenocarcinoma of Human ovary tissue using anti-CRYZL1 mouse monoclonal antibody. (Heat-induced epitope retrieval by 10mM citric buffer, pH6.0, 100°C for 10min, TA504659)



Immunohistochemical staining of paraffin-embedded Human liver tissue within the normal limits using anti-CRYZL1 mouse monoclonal antibody. (Heat-induced epitope retrieval by 10mM citric buffer, pH6.0, 100°C for 10min, TA504659)



Immunohistochemical staining of paraffin-embedded Human Kidney tissue within the normal limits using anti-CRYZL1 mouse monoclonal antibody. (Heat-induced epitope retrieval by 10mM citric buffer, pH6.0, 100°C for 10min, TA504659)