

Product datasheet for TA504632

SAT2 Mouse Monoclonal Antibody [Clone ID: OTI2B3]

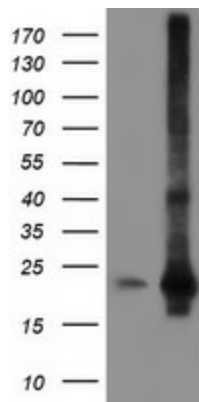
Product data:

Product Type:	Primary Antibodies
Clone Name:	OTI2B3
Applications:	IHC, WB
Recommend Dilution:	WB 1:500~2000, IHC 1:150
Reactivity:	Human, Mouse
Host:	Mouse
Isotype:	IgG1
Clonality:	Monoclonal
Immunogen:	Full length human recombinant protein of human SAT2(NP_597998) produced in HEK293T cell.
Formulation:	PBS (PH 7.3) containing 1% BSA, 50% glycerol and 0.02% sodium azide.
Concentration:	0.58 mg/ml
Purification:	Purified from mouse ascites fluids or tissue culture supernatant by affinity chromatography (protein A/G)
Predicted Protein Size:	19 kDa
Gene Name:	spermidine/spermine N1-acetyltransferase family member 2
Database Link:	NP_597998 Entrez Gene 69215 MouseEntrez Gene 112483 Human
Synonyms:	SSAT2
Protein Pathways:	Arginine and proline metabolism, Metabolic pathways

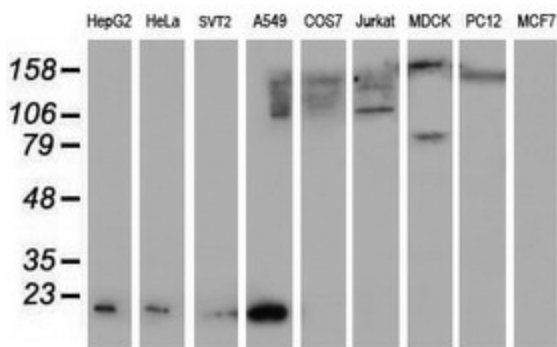


[View online »](#)

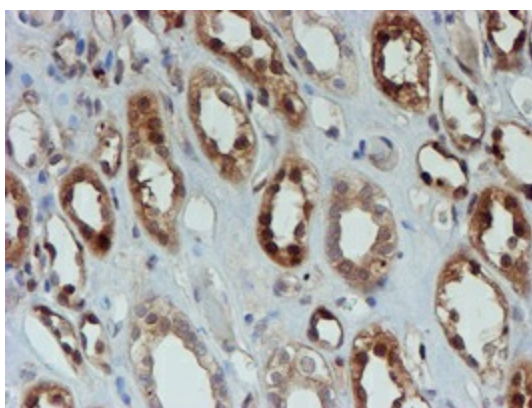
Product images:



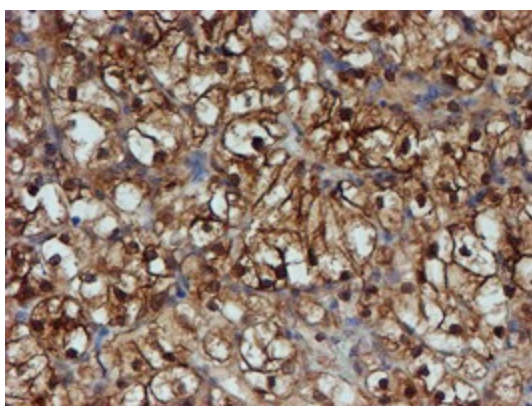
HEK293T cells were transfected with the pCMV6-ENTRY control (Left lane) or pCMV6-ENTRY SAT2 ([RC204044], Right lane) cDNA for 48 hrs and lysed. Equivalent amounts of cell lysates (5 ug per lane) were separated by SDS-PAGE and immunoblotted with anti-SAT2. Positive lysates [LY408821] (100ug) and [LC408821] (20ug) can be purchased separately from OriGene.



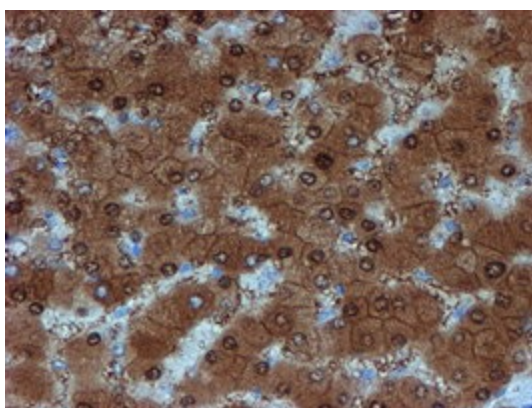
Western blot analysis of extracts (35ug) from 9 different cell lines by using anti-SAT2 monoclonal antibody (HepG2: human; HeLa: human; SVT2: mouse; A549: human; COS7: monkey; Jurkat: human; MDCK: canine; PC12: rat; MCF7: human).



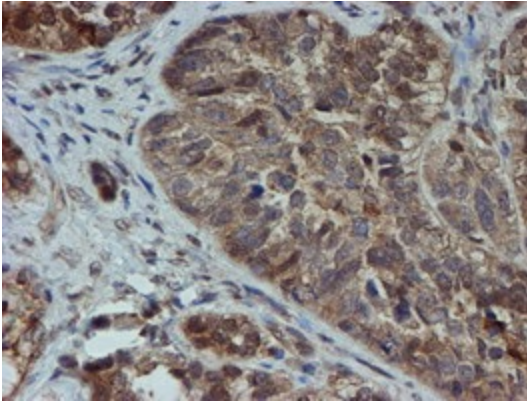
Immunohistochemical staining of paraffin-embedded Human Kidney tissue within the normal limits using anti-SAT2 mouse monoclonal antibody. (Heat-induced epitope retrieval by 10mM citric buffer, pH6.0, 100°C for 10min, TA504632)



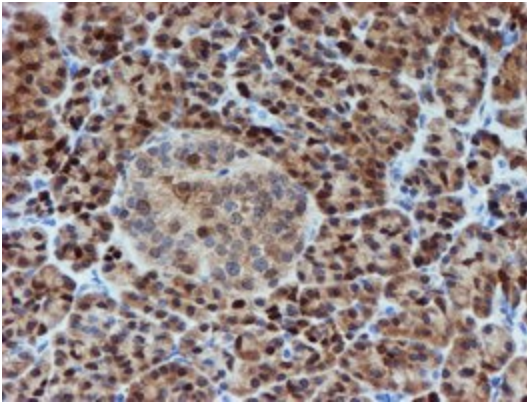
Immunohistochemical staining of paraffin-embedded Carcinoma of Human kidney tissue using anti-SAT2 mouse monoclonal antibody. (Heat-induced epitope retrieval by 10mM citric buffer, pH6.0, 100°C for 10min, TA504632)



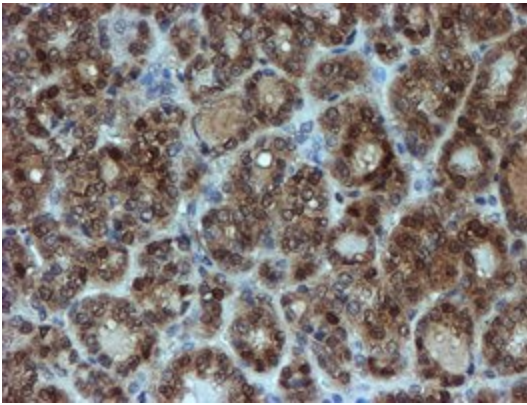
Immunohistochemical staining of paraffin-embedded Human liver tissue within the normal limits using anti-SAT2 mouse monoclonal antibody. (Heat-induced epitope retrieval by 10mM citric buffer, pH6.0, 100°C for 10min, TA504632)



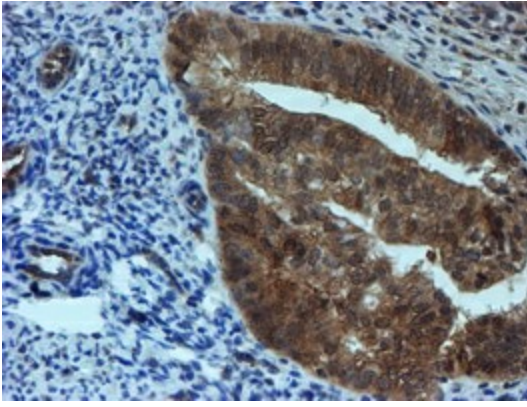
Immunohistochemical staining of paraffin-embedded Adenocarcinoma of Human ovary tissue using anti-SAT2 mouse monoclonal antibody. (Heat-induced epitope retrieval by 10mM citric buffer, pH6.0, 100°C for 10min, TA504632)



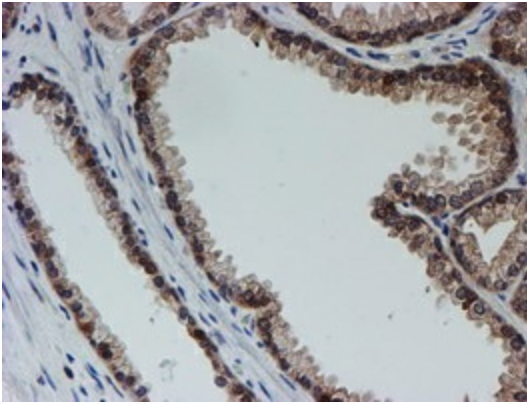
Immunohistochemical staining of paraffin-embedded Human pancreas tissue within the normal limits using anti-SAT2 mouse monoclonal antibody. (Heat-induced epitope retrieval by 10mM citric buffer, pH6.0, 100°C for 10min, TA504632)



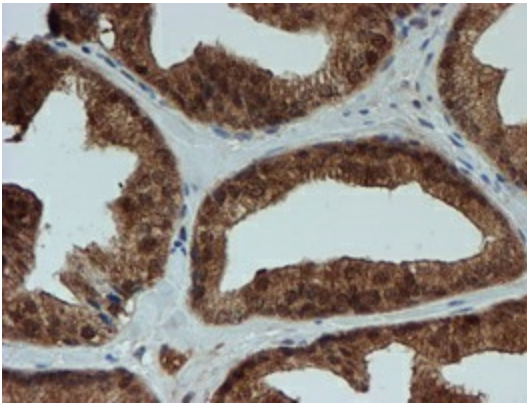
Immunohistochemical staining of paraffin-embedded Carcinoma of Human thyroid tissue using anti-SAT2 mouse monoclonal antibody. (Heat-induced epitope retrieval by 10mM citric buffer, pH6.0, 100°C for 10min, TA504632)



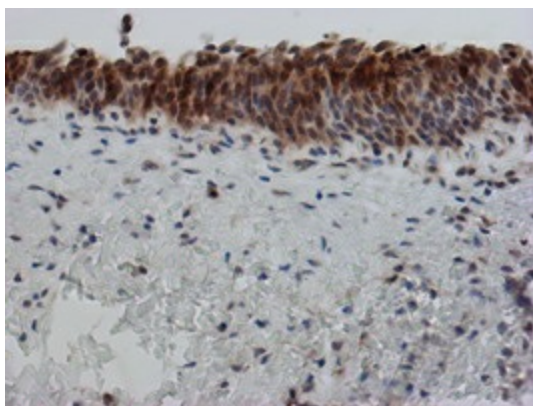
Immunohistochemical staining of paraffin-embedded Adenocarcinoma of Human endometrium tissue using anti-SAT2 mouse monoclonal antibody. (Heat-induced epitope retrieval by 10mM citric buffer, pH6.0, 100°C for 10min, TA504632)



Immunohistochemical staining of paraffin-embedded Human prostate tissue within the normal limits using anti-SAT2 mouse monoclonal antibody. (Heat-induced epitope retrieval by 10mM citric buffer, pH6.0, 100°C for 10min, TA504632)



Immunohistochemical staining of paraffin-embedded Carcinoma of Human prostate tissue using anti-SAT2 mouse monoclonal antibody. (Heat-induced epitope retrieval by 10mM citric buffer, pH6.0, 100°C for 10min, TA504632)



Immunohistochemical staining of paraffin-embedded Human bladder tissue within the normal limits using anti-SAT2 mouse monoclonal antibody. (Heat-induced epitope retrieval by 10mM citric buffer, pH6.0, 100°C for 10min, TA504632)