

## Product datasheet for **TA504478**

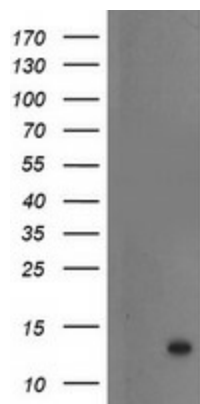
### **S100P Mouse Monoclonal Antibody [Clone ID: OTI1A4]**

#### **Product data:**

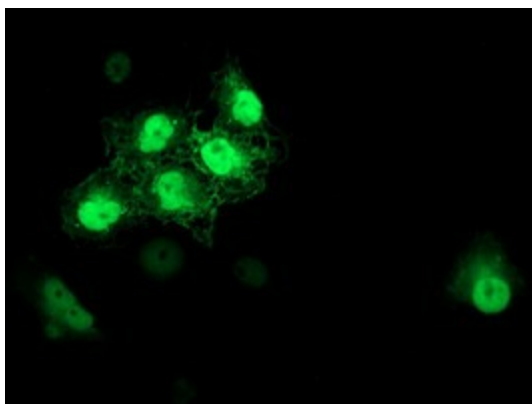
<b>Product Type:</b>	Primary Antibodies
<b>Clone Name:</b>	OTI1A4
<b>Applications:</b>	IF, WB
<b>Recommend Dilution:</b>	WB 1:2000, IF 1:100
<b>Reactivity:</b>	Human
<b>Host:</b>	Mouse
<b>Isotype:</b>	IgG1
<b>Clonality:</b>	Monoclonal
<b>Immunogen:</b>	Full length human recombinant protein of human S100P(NP_005971) produced in HEK293T cell.
<b>Formulation:</b>	PBS (PH 7.3) containing 1% BSA, 50% glycerol and 0.02% sodium azide.
<b>Concentration:</b>	1.84 mg/ml
<b>Purification:</b>	Purified from mouse ascites fluids or tissue culture supernatant by affinity chromatography (protein A/G)
<b>Predicted Protein Size:</b>	10.2 kDa
<b>Gene Name:</b>	S100 calcium binding protein P
<b>Database Link:</b>	<a href="#">NP_005971</a> <a href="#">Entrez Gene 6286</a> <a href="#">Human</a>
<b>Background:</b>	The protein encoded by this gene is a member of the S100 family of proteins containing 2 EF-hand calcium-binding motifs. S100 proteins are localized in the cytoplasm and/or nucleus of a wide range of cells, and involved in the regulation of a number of cellular processes such as cell cycle progression and differentiation. S100 genes include at least 13 members which are located as a cluster on chromosome 1q21; however, this gene is located at 4p16. This protein, in addition to binding Ca <sup>2+</sup> , also binds Zn <sup>2+</sup> and Mg <sup>2+</sup> . This protein may play a role in the etiology of prostate cancer. [provided by RefSeq]
<b>Synonyms:</b>	MIG9



[View online »](#)

**Product images:**

HEK293T cells were transfected with the pCMV6-ENTRY control (Left lane) or pCMV6-ENTRY S100P ([RC201533], Right lane) cDNA for 48 hrs and lysed. Equivalent amounts of cell lysates (5 ug per lane) were separated by SDS-PAGE and immunoblotted with anti-S100P. Positive lysates [LY401809] (100ug) and [LC401809] (20ug) can be purchased separately from OriGene.



Anti-S100P mouse monoclonal antibody (TA504478) immunofluorescent staining of COS7 cells transiently transfected by pCMV6-ENTRY S100P ([RC201533]).