

## Product datasheet for **TA504454**

### Protein C inhibitor (SERPINA5) Mouse Monoclonal Antibody [Clone ID: OTI2D12]

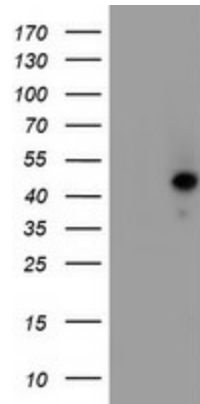
#### Product data:

Product Type:	Primary Antibodies
Clone Name:	OTI2D12
Applications:	FC, IF, WB
Recommend Dilution:	WB 1:2000, IF 1:100, FLOW 1:100
Reactivity:	Human
Host:	Mouse
Isotype:	IgG2b
Clonality:	Monoclonal
Immunogen:	Full length human recombinant protein of human SERPINA5(NP_000615) produced in HEK293T cell.
Formulation:	PBS (PH 7.3) containing 1% BSA, 50% glycerol and 0.02% sodium azide.
Concentration:	0.8 mg/ml
Purification:	Purified from mouse ascites fluids or tissue culture supernatant by affinity chromatography (protein A/G)
Predicted Protein Size:	45.5 kDa
Gene Name:	serpin family A member 5
Database Link:	<a href="#">NP_000615 Entrez Gene 5104 Human</a>
Synonyms:	PAI-3; PAI3; PCI; PCI-B; PLANH3; PROCI
Protein Families:	Druggable Genome, Secreted Protein
Protein Pathways:	Complement and coagulation cascades

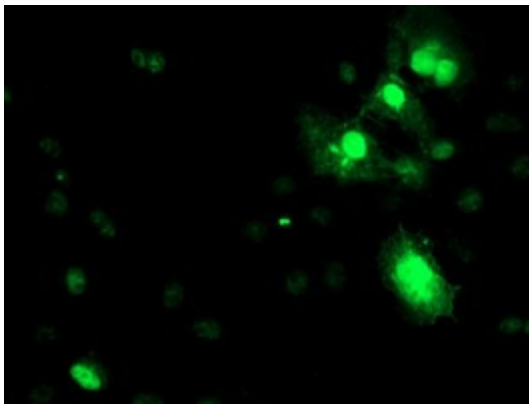


[View online »](#)

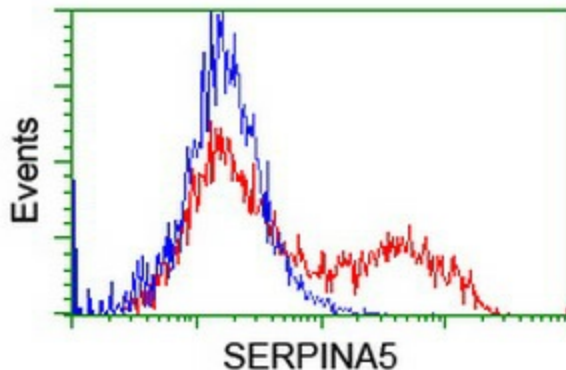
## Product images:



HEK293T cells were transfected with the pCMV6-ENTRY control (Left lane) or pCMV6-ENTRY SERPINA5 ([RC203599], Right lane) cDNA for 48 hrs and lysed. Equivalent amounts of cell lysates (5 ug per lane) were separated by SDS-PAGE and immunoblotted with anti-SERPINA5. Positive lysates [LY424603] (100ug) and [LC424603] (20ug) can be purchased separately from OriGene.



Anti-SERPINA5 mouse monoclonal antibody (TA504454) immunofluorescent staining of COS7 cells transiently transfected by pCMV6-ENTRY SERPINA5 ([RC203599]).



HEK293T cells transfected with either [RC203599] overexpress plasmid (Red) or empty vector control plasmid (Blue) were immunostained by anti-SERPINA5 antibody (TA504454), and then analyzed by flow cytometry.

