

Product datasheet for TA504385

SSX5 Mouse Monoclonal Antibody [Clone ID: OTI3G6]

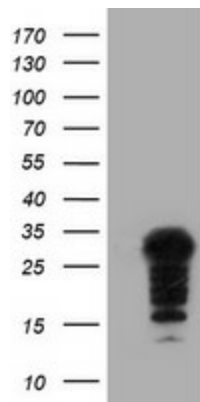
Product data:

| | |
|-------------------------|---|
| Product Type: | Primary Antibodies |
| Clone Name: | OTI3G6 |
| Applications: | FC, IF, WB |
| Recommend Dilution: | WB 1:2000, IF 1:100, FLOW 1:100 |
| Reactivity: | Human |
| Host: | Mouse |
| Isotype: | IgG1 |
| Clonality: | Monoclonal |
| Immunogen: | Full length human recombinant protein of human SSX5(NP_066295) produced in HEK293T cell. |
| Formulation: | PBS (PH 7.3) containing 1% BSA, 50% glycerol and 0.02% sodium azide. |
| Concentration: | 0.75 mg/ml |
| Purification: | Purified from mouse ascites fluids or tissue culture supernatant by affinity chromatography (protein A/G) |
| Predicted Protein Size: | 26.1 kDa |
| Gene Name: | SSX family member 5 |
| Database Link: | NP_066295 Entrez Gene 6758 Human |
| Background: | The product of this gene belongs to the family of highly homologous synovial sarcoma X (SSX) breakpoint proteins. These proteins may function as transcriptional repressors. They are also capable of eliciting spontaneously humoral and cellular immune responses in cancer patients, and are potentially useful targets in cancer vaccine-based immunotherapy. SSX1, SSX2 and SSX4 genes have been involved in the t(X;18) translocation characteristically found in all synovial sarcomas. This gene appears not to be involved in this type of chromosome translocation. Two transcript variants encoding distinct isoforms have been identified for this gene. [provided by RefSeq] |
| Synonyms: | MGC9494 |
| Protein Families: | Transcription Factors |

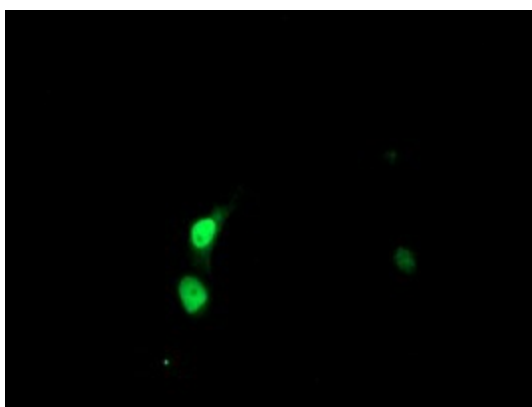


[View online »](#)

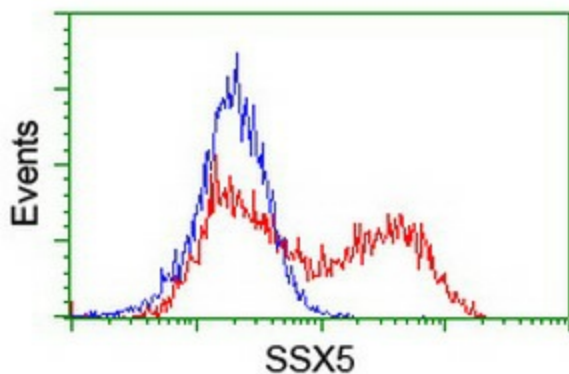
Product images:



HEK293T cells were transfected with the pCMV6-ENTRY control (Left lane) or pCMV6-ENTRY SSX5 ([RC202208], Right lane) cDNA for 48 hrs and lysed. Equivalent amounts of cell lysates (5 ug per lane) were separated by SDS-PAGE and immunoblotted with anti-SSX5. Positive lysates [LY412141] (100ug) and [LC412141] (20ug) can be purchased separately from OriGene.



Anti-SSX5 mouse monoclonal antibody (TA504385) immunofluorescent staining of COS7 cells transiently transfected by pCMV6-ENTRY SSX5 ([RC202208]).



HEK293T cells transfected with either [RC202208] overexpress plasmid (Red) or empty vector control plasmid (Blue) were immunostained by anti-SSX5 antibody (TA504385), and then analyzed by flow cytometry.