

Product datasheet for TA504313

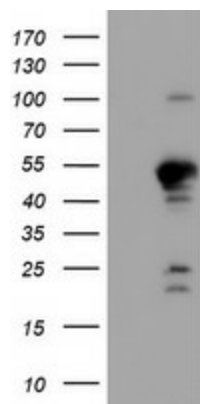
GADD34 (PPP1R15A) Mouse Monoclonal Antibody [Clone ID: OTI4F1]

Product data:

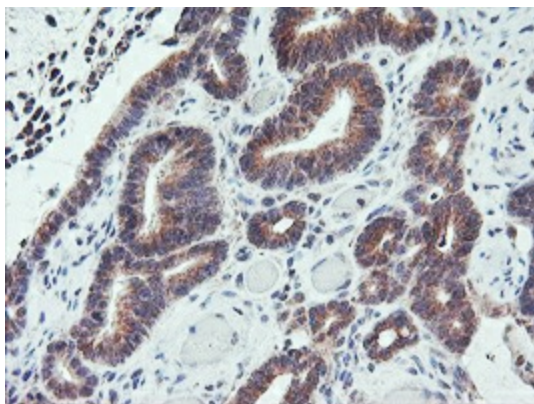
Product Type:	Primary Antibodies
Clone Name:	OTI4F1
Applications:	FC, IF, IHC, WB
Recommend Dilution:	WB 1:2000, IHC 1:150, IF 1:100, FLOW 1:100
Reactivity:	Human
Host:	Mouse
Isotype:	IgG1
Clonality:	Monoclonal
Immunogen:	Full length human recombinant protein of human PPP1R15A(NP_055145) produced in HEK293T cell.
Formulation:	PBS (PH 7.3) containing 1% BSA, 50% glycerol and 0.02% sodium azide.
Concentration:	1 mg/ml
Purification:	Purified from mouse ascites fluids or tissue culture supernatant by affinity chromatography (protein A/G)
Predicted Protein Size:	73.3 kDa
Gene Name:	protein phosphatase 1 regulatory subunit 15A
Database Link:	NP_055145 Entrez Gene 23645 Human
Background:	This gene is a member of a group of genes whose transcript levels are increased following stressful growth arrest conditions and treatment with DNA-damaging agents. The induction of this gene by ionizing radiation occurs in certain cell lines regardless of p53 status, and its protein response is correlated with apoptosis following ionizing radiation. [provided by RefSeq, Jul 2008]
Synonyms:	GADD34
Protein Families:	Druggable Genome



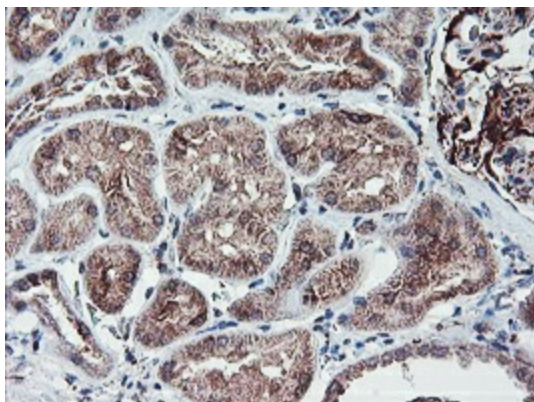
[View online »](#)

Product images:

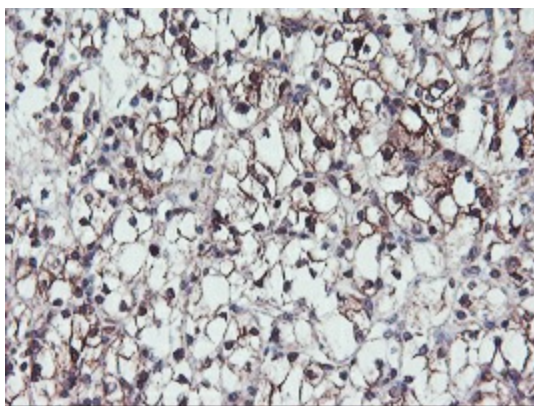
HEK293T cells were transfected with the pCMV6-ENTRY control (Left lane) or pCMV6-ENTRY PPP1R15A ([RC200581], Right lane) cDNA for 48 hrs and lysed. Equivalent amounts of cell lysates (5 ug per lane) were separated by SDS-PAGE and immunoblotted with anti-PPP1R15A. Positive lysates [LY415358] (100ug) and [LC415358] (20ug) can be purchased separately from OriGene.



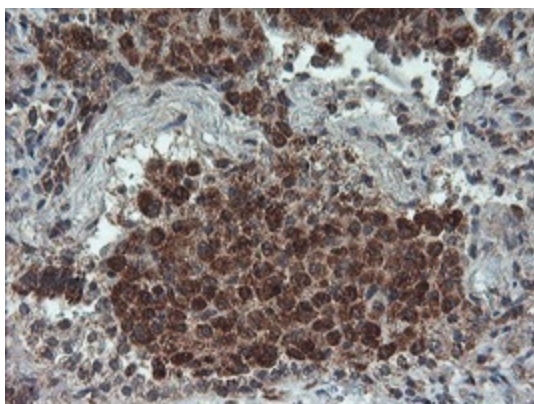
Immunohistochemical staining of paraffin-embedded Adenocarcinoma of Human colon tissue using anti-PPP1R15A mouse monoclonal antibody. (Heat-induced epitope retrieval by 10mM citric buffer, pH6.0, 100°C for 10min, TA504313)



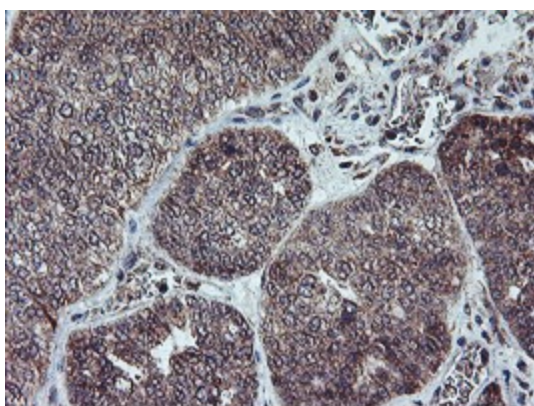
Immunohistochemical staining of paraffin-embedded Human Kidney tissue within the normal limits using anti-PPP1R15A mouse monoclonal antibody. (Heat-induced epitope retrieval by 10mM citric buffer, pH6.0, 100°C for 10min, TA504313)



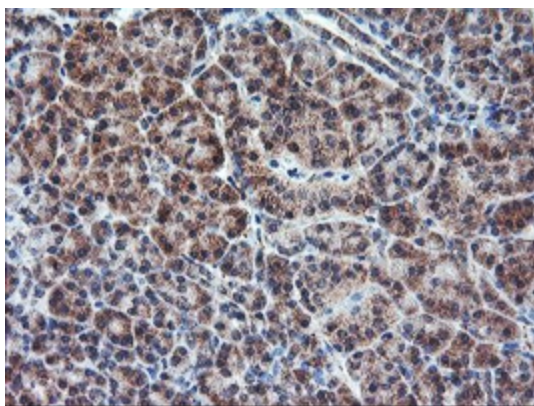
Immunohistochemical staining of paraffin-embedded Carcinoma of Human kidney tissue using anti-PPP1R15A mouse monoclonal antibody. (Heat-induced epitope retrieval by 10mM citric buffer, pH6.0, 100°C for 10min, TA504313)



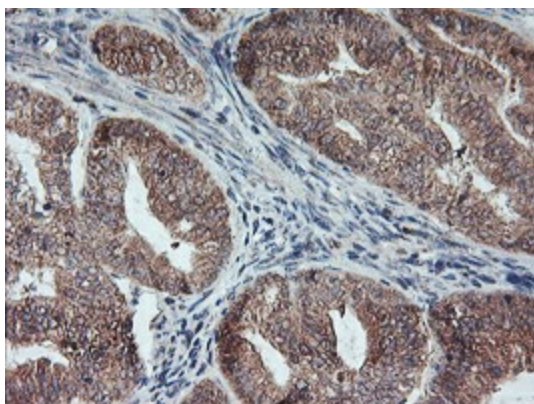
Immunohistochemical staining of paraffin-embedded Carcinoma of Human lung tissue using anti-PPP1R15A mouse monoclonal antibody. (Heat-induced epitope retrieval by 10mM citric buffer, pH6.0, 100°C for 10min, TA504313)



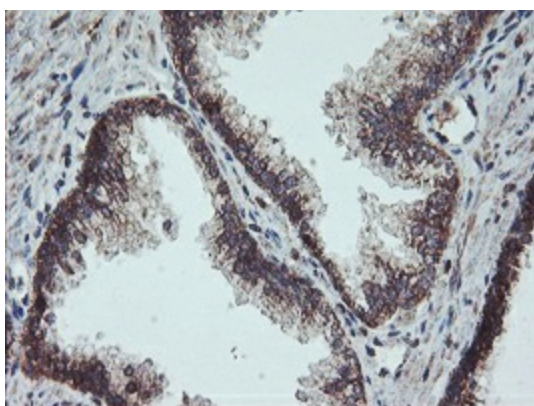
Immunohistochemical staining of paraffin-embedded Adenocarcinoma of Human ovary tissue using anti-PPP1R15A mouse monoclonal antibody. (Heat-induced epitope retrieval by 10mM citric buffer, pH6.0, 100°C for 10min, TA504313)



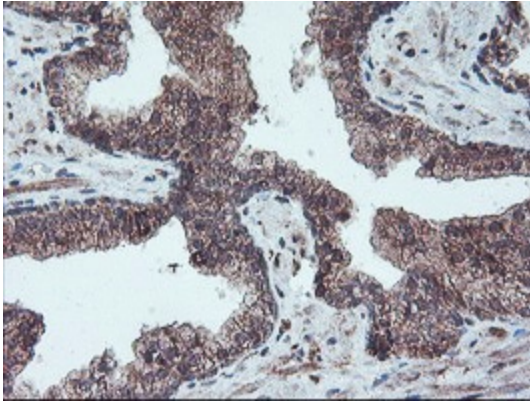
Immunohistochemical staining of paraffin-embedded Human pancreas tissue within the normal limits using anti-PPP1R15A mouse monoclonal antibody. (Heat-induced epitope retrieval by 10mM citric buffer, pH6.0, 100°C for 10min, TA504313)



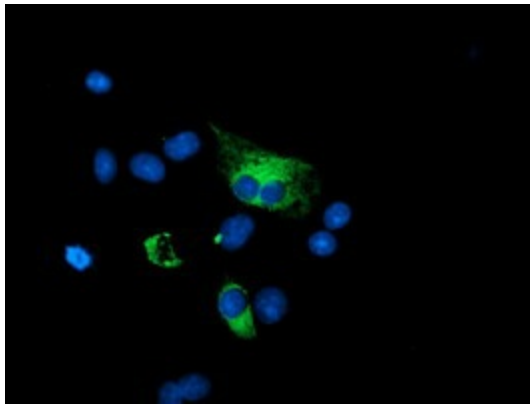
Immunohistochemical staining of paraffin-embedded Adenocarcinoma of Human endometrium tissue using anti-PPP1R15A mouse monoclonal antibody. (Heat-induced epitope retrieval by 10mM citric buffer, pH6.0, 100°C for 10min, TA504313)



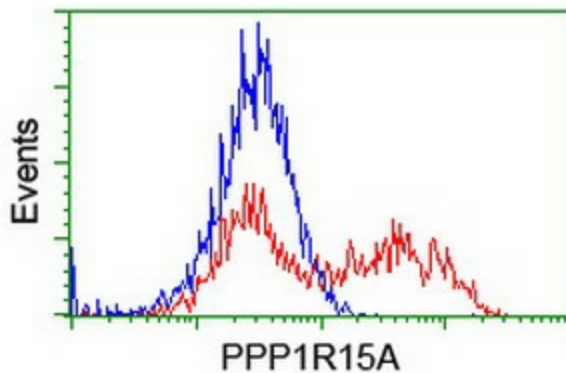
Immunohistochemical staining of paraffin-embedded Human prostate tissue within the normal limits using anti-PPP1R15A mouse monoclonal antibody. (Heat-induced epitope retrieval by 10mM citric buffer, pH6.0, 100°C for 10min, TA504313)



Immunohistochemical staining of paraffin-embedded Carcinoma of Human prostate tissue using anti-PPP1R15A mouse monoclonal antibody. (Heat-induced epitope retrieval by 10mM citric buffer, pH6.0, 100°C for 10min, TA504313)



Anti-PPP1R15A mouse monoclonal antibody (TA504313) immunofluorescent staining of COS7 cells transiently transfected by pCMV6-ENTRY PPP1R15A ([RC200581]).



HEK293T cells transfected with either [RC200581] overexpress plasmid (Red) or empty vector control plasmid (Blue) were immunostained by anti-PPP1R15A antibody (TA504313), and then analyzed by flow cytometry.