

Product datasheet for TA504279

Pallidin (BLOC1S6) Mouse Monoclonal Antibody [Clone ID: OT11H9]

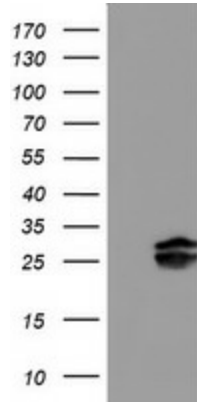
Product data:

Product Type:	Primary Antibodies
Clone Name:	OT11H9
Applications:	FC, IHC, WB
Recommend Dilution:	WB 1:500~2000, IHC 1:150, FLOW 1:100
Reactivity:	Human, Mouse
Host:	Mouse
Isotype:	IgG1
Clonality:	Monoclonal
Immunogen:	Full length human recombinant protein of human PLDN(NP_036520) produced in HEK293T cell.
Formulation:	PBS (PH 7.3) containing 1% BSA, 50% glycerol and 0.02% sodium azide.
Concentration:	0.6 mg/ml
Purification:	Purified from mouse ascites fluids or tissue culture supernatant by affinity chromatography (protein A/G)
Predicted Protein Size:	19.6 kDa
Gene Name:	biogenesis of lysosomal organelles complex 1 subunit 6
Database Link:	NP_036520 Entrez Gene 18457 MouseEntrez Gene 26258 Human
Background:	The protein encoded by this gene may play a role in intracellular vesicle trafficking. It interacts with Syntaxin 13 which mediates intracellular membrane fusion. Several alternatively spliced transcript variants of this gene have been described, but the full-length nature of some of these variants has not been determined. [provided by RefSeq]
Synonyms:	BLOS6; HPS9; PA; PALLID; PLDN

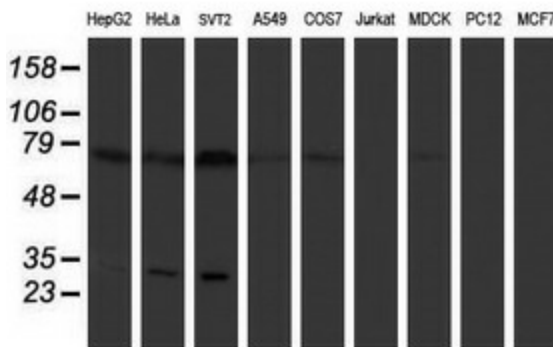


[View online »](#)

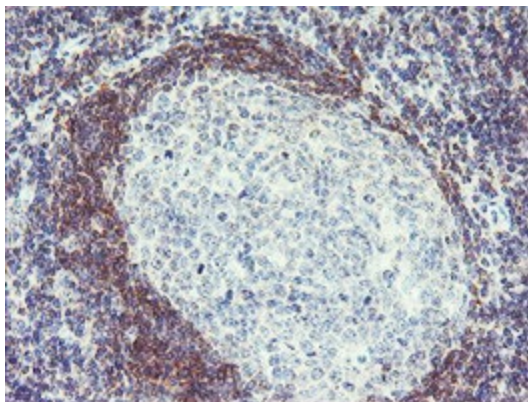
Product images:



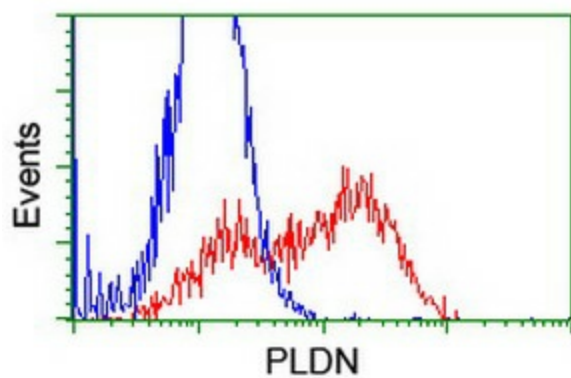
HEK293T cells were transfected with the pCMV6-ENTRY control (Left lane) or pCMV6-ENTRY PLDN ([RC201514], Right lane) cDNA for 48 hrs and lysed. Equivalent amounts of cell lysates (5 ug per lane) were separated by SDS-PAGE and immunoblotted with anti-PLDN. Positive lysates [LY402203] (100ug) and [LC402203] (20ug) can be purchased separately from OriGene.



Western blot analysis of extracts (35ug) from 9 different cell lines by using anti-PLDN monoclonal antibody.



Immunohistochemical staining of paraffin-embedded Human tonsil within the normal limits using anti-PLDN mouse monoclonal antibody. (Heat-induced epitope retrieval by 10mM citric buffer, pH6.0, 100°C for 10min, TA504279)



HEK293T cells transfected with either [RC201514] overexpress plasmid (Red) or empty vector control plasmid (Blue) were immunostained by anti-PLDN antibody (TA504279), and then analyzed by flow cytometry.