

Product datasheet for TA504055

SERPINB6 Mouse Monoclonal Antibody [Clone ID: OTI2F8]

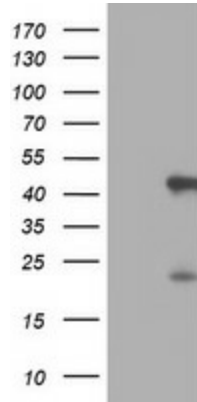
Product data:

Product Type:	Primary Antibodies
Clone Name:	OTI2F8
Applications:	IHC, WB
Recommend Dilution:	WB 1:500~2000, IHC 1:150
Reactivity:	Human
Host:	Mouse
Isotype:	IgG2a
Clonality:	Monoclonal
Immunogen:	Full length human recombinant protein of human SERPINB6(NP_004559) produced in HEK293T cell.
Formulation:	PBS (PH 7.3) containing 1% BSA, 50% glycerol and 0.02% sodium azide.
Concentration:	0.99 mg/ml
Purification:	Purified from mouse ascites fluids or tissue culture supernatant by affinity chromatography (protein A/G)
Gene Name:	serpin family B member 6
Database Link:	NP_004559 Entrez Gene 5269 Human
Background:	The protein encoded by this gene is a member of the serpin (serine proteinase inhibitor) superfamily, and ovalbumin(ov)-serpin subfamily. It was originally discovered as a placental thrombin inhibitor. The mouse homolog was found to be expressed in the hair cells of the inner ear. Mutations in this gene are associated with nonsyndromic progressive hearing loss, suggesting that this serpin plays an important role in the inner ear in the protection against leakage of lysosomal content during stress, and that loss of this protection results in cell death and sensorineural hearing loss. Alternatively spliced transcript variants have been found for this gene. [provided by RefSeq]
Synonyms:	CAP; DFNB91; MSTP057; PI-6; PI6; PTI; SPI3
Protein Families:	Druggable Genome

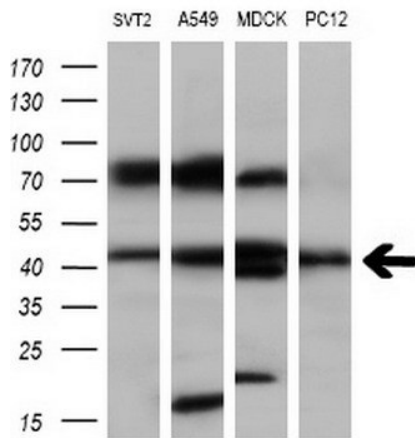


[View online »](#)

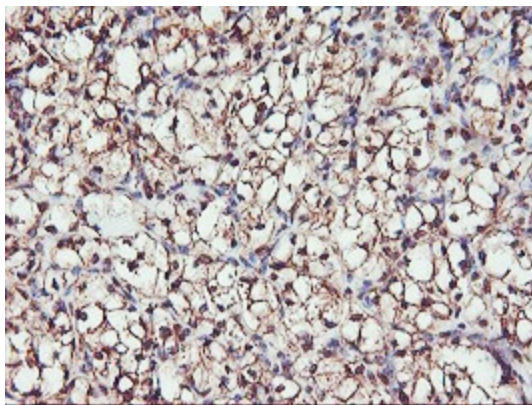
Product images:



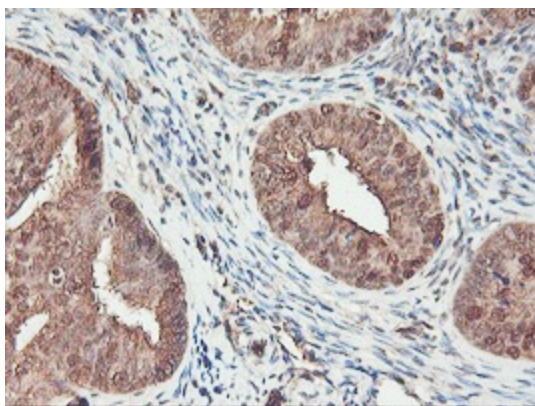
HEK293T cells were transfected with the pCMV6-ENTRY control (Left lane) or pCMV6-ENTRY SERPINB6 ([RC200668], Right lane) cDNA for 48 hrs and lysed. Equivalent amounts of cell lysates (5 ug per lane) were separated by SDS-PAGE and immunoblotted with anti-SERPINB6. Positive lysates [LY417897] (100ug) and [LC417897] (20ug) can be purchased separately from OriGene.



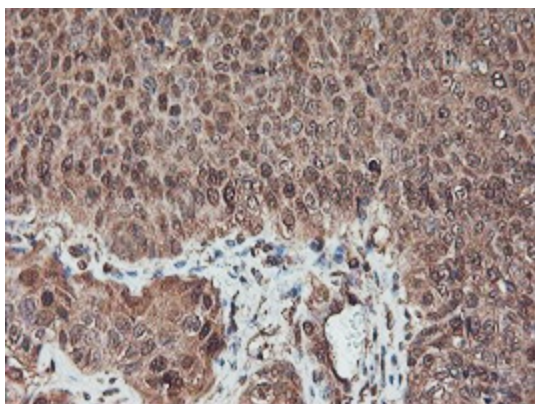
Western blot analysis of extracts (10ug) from 4 different cell lines by using anti-SERPINB6 monoclonal antibody (1:200).



Immunohistochemical staining of paraffin-embedded Carcinoma of Human kidney tissue using anti-SERPINB6 mouse monoclonal antibody. (Heat-induced epitope retrieval by 10mM citric buffer, pH6.0, 100°C for 10min, TA504055)



Immunohistochemical staining of paraffin-embedded Adenocarcinoma of Human endometrium tissue using anti-SERPINB6 mouse monoclonal antibody. (Heat-induced epitope retrieval by 10mM citric buffer, pH6.0, 100°C for 10min, TA504055)



Immunohistochemical staining of paraffin-embedded Carcinoma of Human bladder tissue using anti-SERPINB6 mouse monoclonal antibody. (Heat-induced epitope retrieval by 10mM citric buffer, pH6.0, 100°C for 10min, TA504055)