

Product datasheet for TA503997

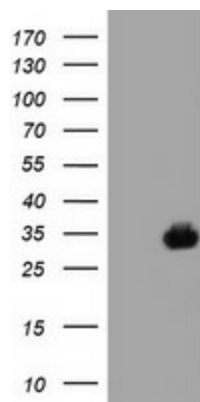
SDS Mouse Monoclonal Antibody [Clone ID: OTI4C3]

Product data:

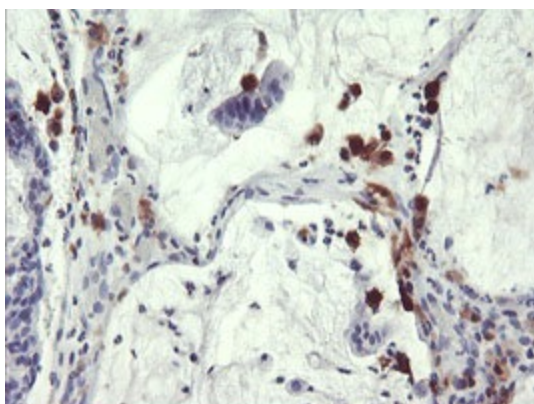
Product Type:	Primary Antibodies
Clone Name:	OTI4C3
Applications:	FC, IHC, WB
Recommend Dilution:	WB 1:2000, IHC 1:150, FLOW 1:100
Reactivity:	Human
Host:	Mouse
Isotype:	IgG1
Clonality:	Monoclonal
Immunogen:	Full length human recombinant protein of human SDS(NP_006834) produced in HEK293T cell.
Formulation:	PBS (PH 7.3) containing 1% BSA, 50% glycerol and 0.02% sodium azide.
Concentration:	0.61 mg/ml
Purification:	Purified from mouse ascites fluids or tissue culture supernatant by affinity chromatography (protein A/G)
Predicted Protein Size:	34.4 kDa
Gene Name:	serine dehydratase
Database Link:	NP_006834 Entrez Gene 10993 Human
Background:	This gene encodes one of three enzymes that are involved in metabolizing serine and glycine. L-serine dehydratase converts L-serine to pyruvate and ammonia and requires pyridoxal phosphate as a cofactor. The encoded protein can also metabolize threonine to NH ₄ ⁺ and 2-ketobutyrate. The encoded protein is found predominantly in the liver. [provided by RefSeq]. COMPLETENESS: complete on the 3' end.
Synonyms:	SDH
Protein Pathways:	Cysteine and methionine metabolism, Glycine, serine and threonine metabolism, Metabolic pathways



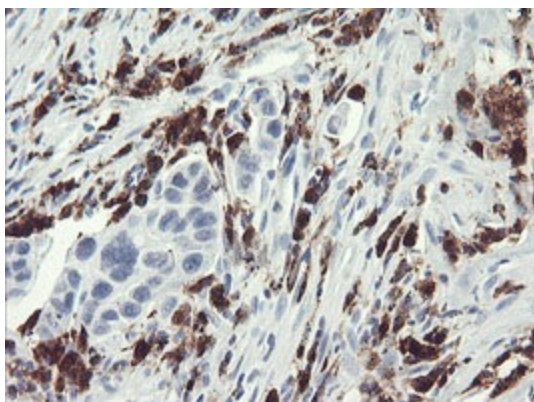
[View online »](#)

Product images:

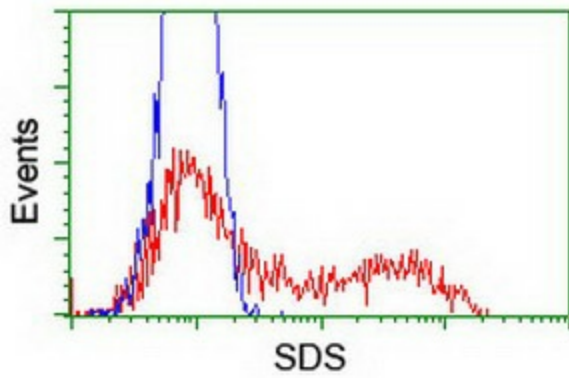
HEK293T cells were transfected with the pCMV6-ENTRY control (Left lane) or pCMV6-ENTRY SDS ([RC217814], Right lane) cDNA for 48 hrs and lysed. Equivalent amounts of cell lysates (5 ug per lane) were separated by SDS-PAGE and immunoblotted with anti-SDS. Positive lysates [LY416388] (100ug) and [LC416388] (20ug) can be purchased separately from OriGene.



Immunohistochemical staining of paraffin-embedded Adenocarcinoma of Human colon tissue using anti-SDS mouse monoclonal antibody. (Heat-induced epitope retrieval by 10mM citric buffer, pH6.0, 100°C for 10min, TA503997)



Immunohistochemical staining of paraffin-embedded Carcinoma of Human lung tissue using anti-SDS mouse monoclonal antibody. (Heat-induced epitope retrieval by 10mM citric buffer, pH6.0, 100°C for 10min, TA503997)



HEK293T cells transfected with either [RC217814] overexpress plasmid (Red) or empty vector control plasmid (Blue) were immunostained by anti-SDS antibody (TA503997), and then analyzed by flow cytometry.