

Product datasheet for **TA503948**

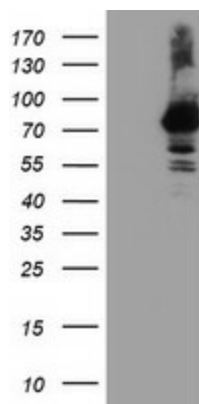
RNPEP Mouse Monoclonal Antibody [Clone ID: OTI3B5]

Product data:

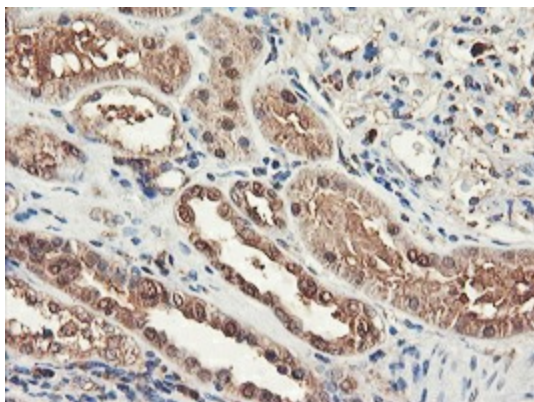
Product Type:	Primary Antibodies
Clone Name:	OTI3B5
Applications:	FC, IF, IHC, WB
Recommend Dilution:	WB 1:2000, IHC 1:150, IF 1:100, FLOW 1:100
Reactivity:	Human
Host:	Mouse
Isotype:	IgG1
Clonality:	Monoclonal
Immunogen:	Full length human recombinant protein of human RNPEP(NP_064601) produced in HEK293T cell.
Formulation:	PBS (PH 7.3) containing 1% BSA, 50% glycerol and 0.02% sodium azide.
Concentration:	0.77 mg/ml
Purification:	Purified from mouse ascites fluids or tissue culture supernatant by affinity chromatography (protein A/G)
Gene Name:	arginyl aminopeptidase
Database Link:	NP_064601 Entrez Gene 6051 Human
Synonyms:	DKFZp547H084
Protein Families:	Druggable Genome, Protease, Secreted Protein



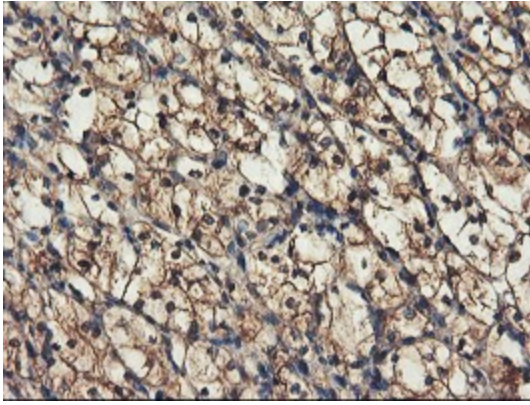
[View online »](#)

Product images:

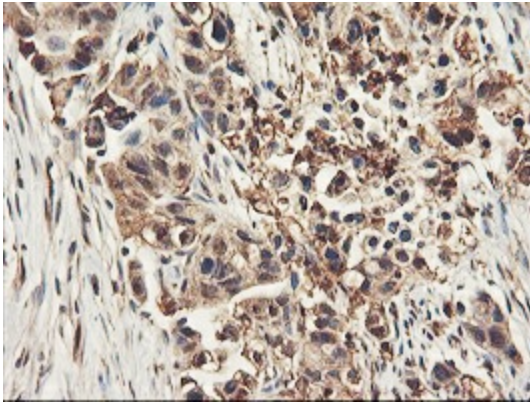
HEK293T cells were transfected with the pCMV6-ENTRY control (Left lane) or pCMV6-ENTRY RNPEP ([RC200756], Right lane) cDNA for 48 hrs and lysed. Equivalent amounts of cell lysates (5 ug per lane) were separated by SDS-PAGE and immunoblotted with anti-RNPEP. Positive lysates [LY412581] (100ug) and [LC412581] (20ug) can be purchased separately from OriGene.



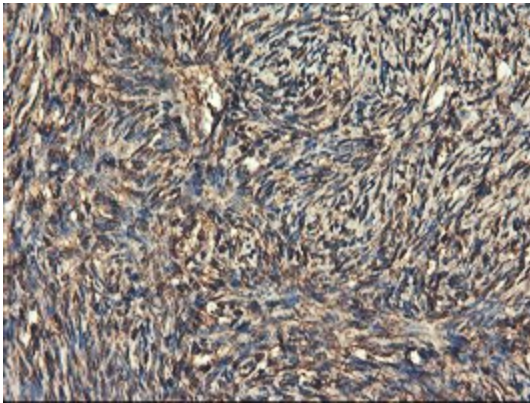
Immunohistochemical staining of paraffin-embedded Human Kidney tissue within the normal limits using anti-RNPEP mouse monoclonal antibody. (Heat-induced epitope retrieval by 10mM citric buffer, pH6.0, 100°C for 10min, TA503948)



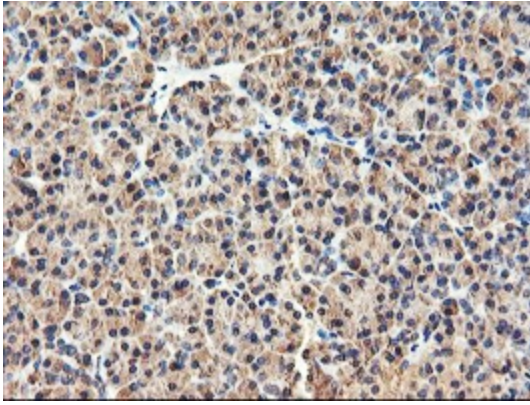
Immunohistochemical staining of paraffin-embedded Carcinoma of Human kidney tissue using anti-RNPEP mouse monoclonal antibody. (Heat-induced epitope retrieval by 10mM citric buffer, pH6.0, 100°C for 10min, TA503948)



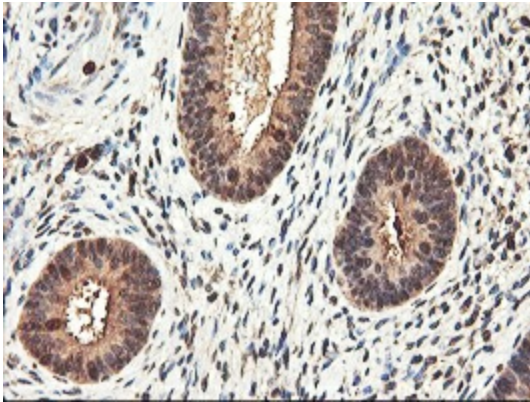
Immunohistochemical staining of paraffin-embedded Carcinoma of Human lung tissue using anti-RNPEP mouse monoclonal antibody. (Heat-induced epitope retrieval by 10mM citric buffer, pH6.0, 100°C for 10min, TA503948)



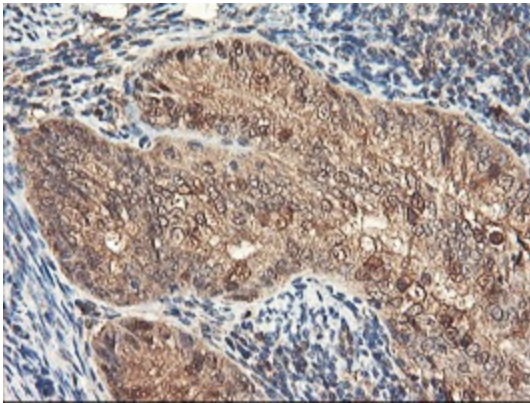
Immunohistochemical staining of paraffin-embedded Human Ovary tissue within the normal limits using anti-RNPEP mouse monoclonal antibody. (Heat-induced epitope retrieval by 10mM citric buffer, pH6.0, 100°C for 10min, TA503948)



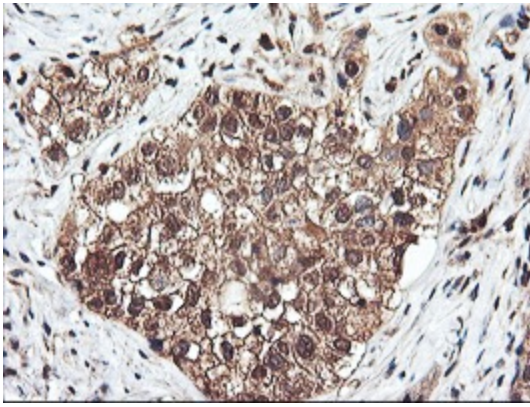
Immunohistochemical staining of paraffin-embedded Human pancreas tissue within the normal limits using anti-RNPEP mouse monoclonal antibody. (Heat-induced epitope retrieval by 10mM citric buffer, pH6.0, 100°C for 10min, TA503948)



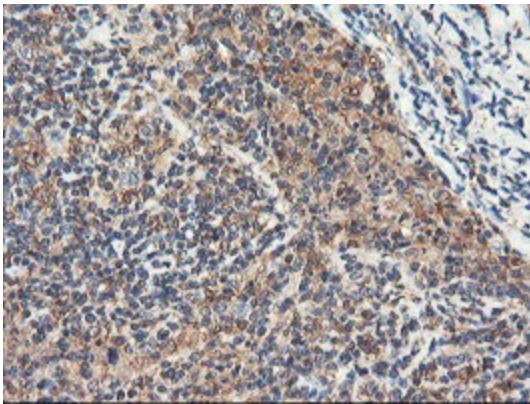
Immunohistochemical staining of paraffin-embedded Human endometrium tissue within the normal limits using anti-RNPEP mouse monoclonal antibody. (Heat-induced epitope retrieval by 10mM citric buffer, pH6.0, 100°C for 10min, TA503948)



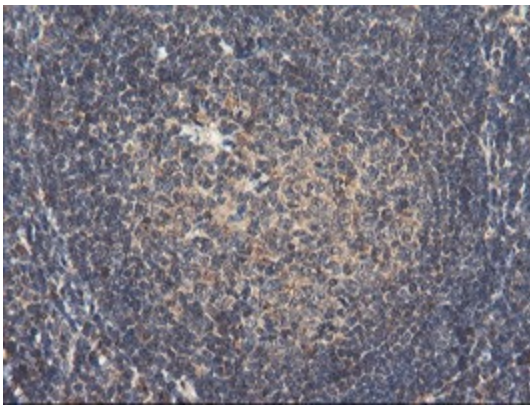
Immunohistochemical staining of paraffin-embedded Adenocarcinoma of Human endometrium tissue using anti-RNPEP mouse monoclonal antibody. (Heat-induced epitope retrieval by 10mM citric buffer, pH6.0, 100°C for 10min, TA503948)



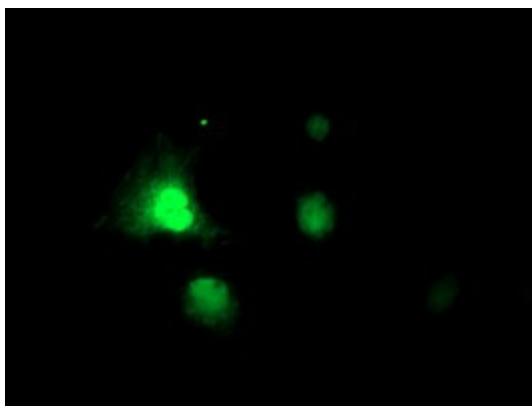
Immunohistochemical staining of paraffin-embedded Carcinoma of Human bladder tissue using anti-RNPEP mouse monoclonal antibody. (Heat-induced epitope retrieval by 10mM citric buffer, pH6.0, 100°C for 10min, TA503948)



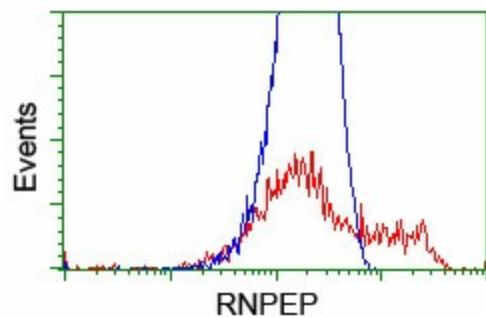
Immunohistochemical staining of paraffin-embedded Human lymphoma tissue using anti-RNPEP mouse monoclonal antibody. (Heat-induced epitope retrieval by 10mM citric buffer, pH6.0, 100°C for 10min, TA503948)



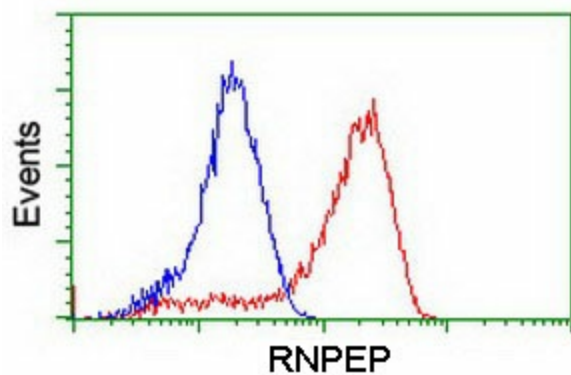
Immunohistochemical staining of paraffin-embedded Human tonsil within the normal limits using anti-RNPEP mouse monoclonal antibody. (Heat-induced epitope retrieval by 10mM citric buffer, pH6.0, 100°C for 10min, TA503948)



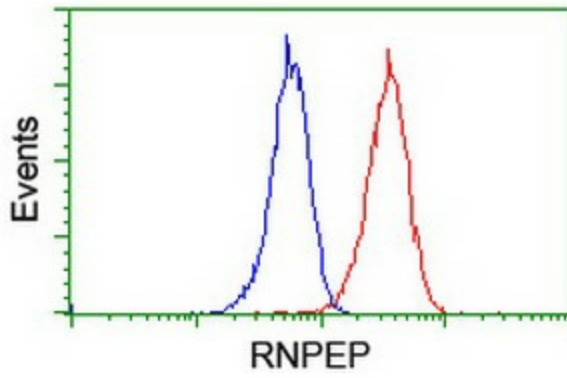
Anti-RNPEP mouse monoclonal antibody (TA503948) immunofluorescent staining of COS7 cells transiently transfected by pCMV6-ENTRY RNPEP ([RC200756]).



HEK293T cells transfected with either [RC200756] overexpress plasmid (Red) or empty vector control plasmid (Blue) were immunostained by anti-RNPEP antibody (TA503948), and then analyzed by flow cytometry.



Flow cytometric Analysis of HeLa cells, using anti-RNPEP antibody (TA503948), (Red), compared to a nonspecific negative control antibody, (Blue).



Flow cytometric Analysis of Jurkat cells, using anti-RNPEP antibody (TA503948), (Red), compared to a nonspecific negative control antibody, (Blue).