

## Product datasheet for **TA503847**

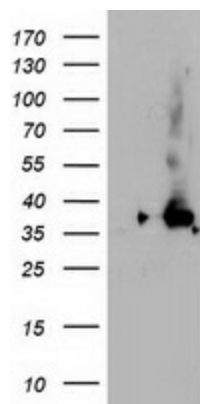
### **NUDT18 Mouse Monoclonal Antibody [Clone ID: OTI5D7]**

#### **Product data:**

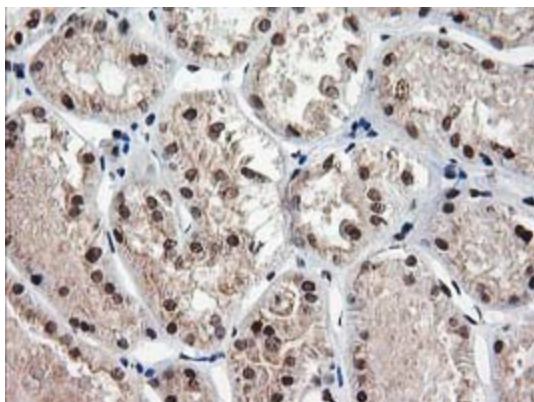
<b>Product Type:</b>	Primary Antibodies
<b>Clone Name:</b>	OTI5D7
<b>Applications:</b>	FC, IF, IHC, WB
<b>Recommend Dilution:</b>	WB 1:2000, IHC 1:150, IF 1:100, FLOW 1:100
<b>Reactivity:</b>	Human
<b>Host:</b>	Mouse
<b>Isotype:</b>	IgG1
<b>Clonality:</b>	Monoclonal
<b>Immunogen:</b>	Full length human recombinant protein of human NUDT18(NP_079091) produced in HEK293T cell.
<b>Formulation:</b>	PBS (PH 7.3) containing 1% BSA, 50% glycerol and 0.02% sodium azide.
<b>Concentration:</b>	0.55 mg/ml
<b>Purification:</b>	Purified from mouse ascites fluids or tissue culture supernatant by affinity chromatography (protein A/G)
<b>Predicted Protein Size:</b>	35.3 kDa
<b>Gene Name:</b>	nudix hydrolase 18
<b>Database Link:</b>	<a href="#">NP_079091 Entrez Gene 79873 Human</a>
<b>Synonyms:</b>	MTH3



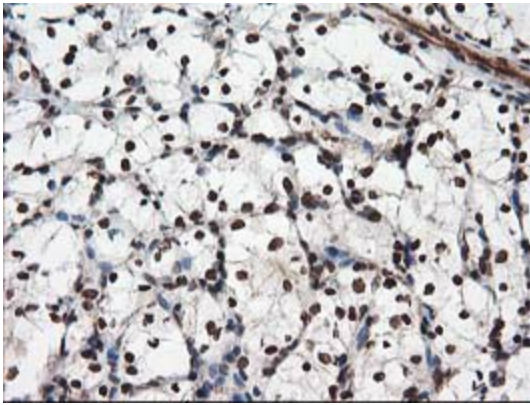
[View online »](#)

**Product images:**

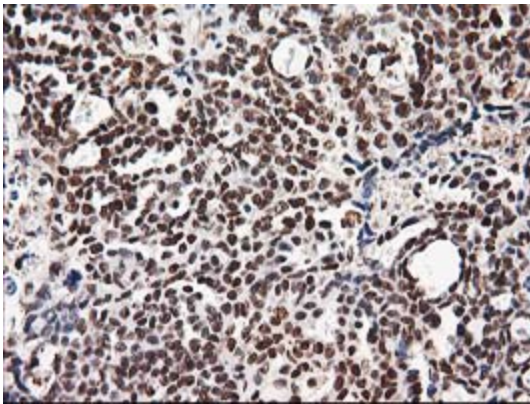
HEK293T cells were transfected with the pCMV6-ENTRY control (Left lane) or pCMV6-ENTRY NUDT18 ([RC204376], Right lane) cDNA for 48 hrs and lysed. Equivalent amounts of cell lysates (5 ug per lane) were separated by SDS-PAGE and immunoblotted with anti-NUDT18. Positive lysates [LY403033] (100ug) and [LC403033] (20ug) can be purchased separately from OriGene.



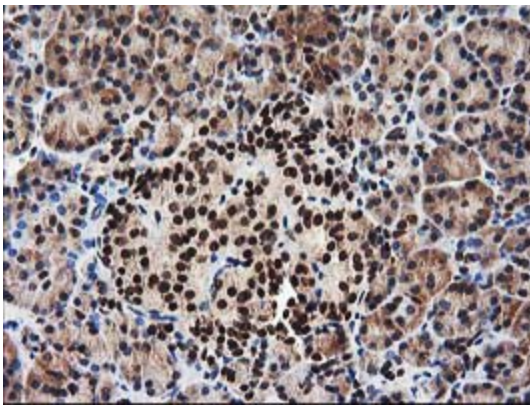
Immunohistochemical staining of paraffin-embedded Human Kidney tissue within the normal limits using anti-NUDT18 mouse monoclonal antibody. (Heat-induced epitope retrieval by 10mM citric buffer, pH6.0, 100°C for 10min, TA503847)



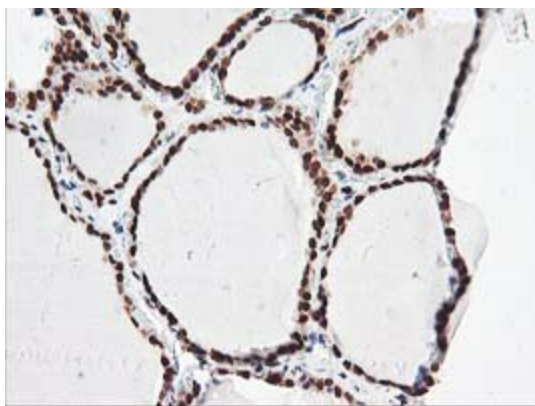
Immunohistochemical staining of paraffin-embedded Carcinoma of Human kidney tissue using anti-NUDT18 mouse monoclonal antibody. (Heat-induced epitope retrieval by 10mM citric buffer, pH6.0, 100°C for 10min, TA503847)



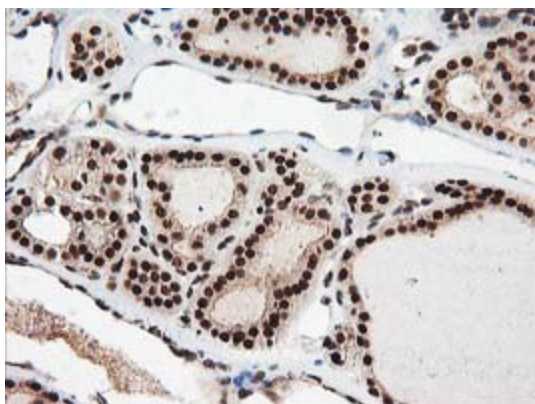
Immunohistochemical staining of paraffin-embedded Adenocarcinoma of Human ovary tissue using anti-NUDT18 mouse monoclonal antibody. (Heat-induced epitope retrieval by 10mM citric buffer, pH6.0, 100°C for 10min, TA503847)



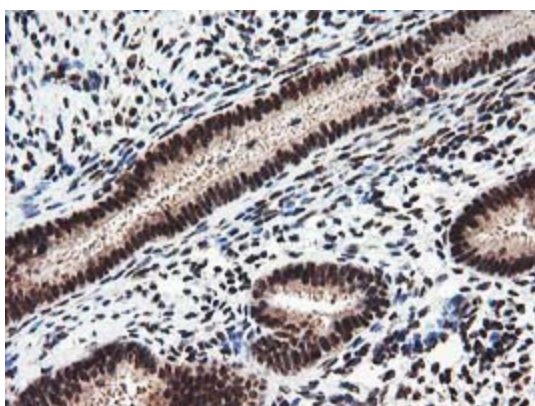
Immunohistochemical staining of paraffin-embedded Human pancreas tissue within the normal limits using anti-NUDT18 mouse monoclonal antibody. (Heat-induced epitope retrieval by 10mM citric buffer, pH6.0, 100°C for 10min, TA503847)



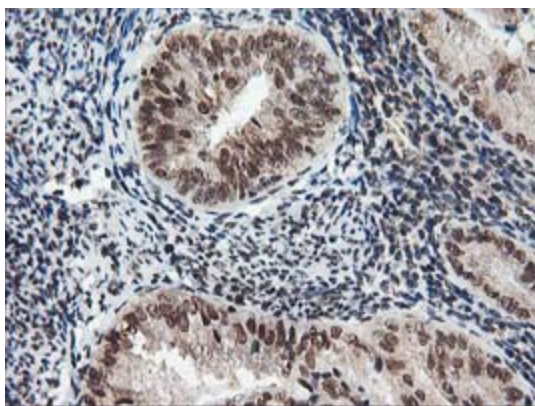
Immunohistochemical staining of paraffin-embedded Human thyroid tissue within the normal limits using anti-NUDT18 mouse monoclonal antibody. (Heat-induced epitope retrieval by 10mM citric buffer, pH6.0, 100°C for 10min, TA503847)



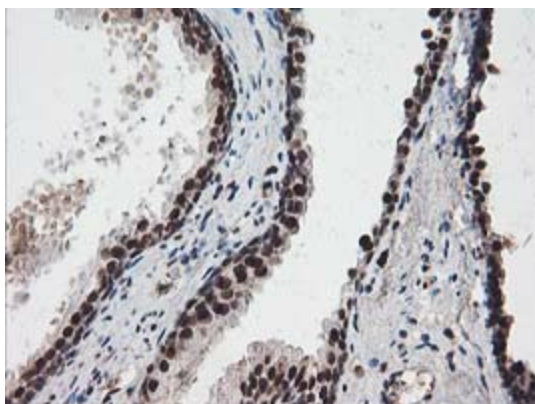
Immunohistochemical staining of paraffin-embedded Carcinoma of Human thyroid tissue using anti-NUDT18 mouse monoclonal antibody. (Heat-induced epitope retrieval by 10mM citric buffer, pH6.0, 100°C for 10min, TA503847)



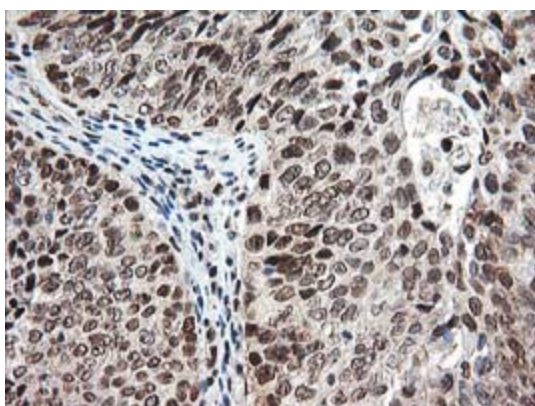
Immunohistochemical staining of paraffin-embedded Human endometrium tissue within the normal limits using anti-NUDT18 mouse monoclonal antibody. (Heat-induced epitope retrieval by 10mM citric buffer, pH6.0, 100°C for 10min, TA503847)



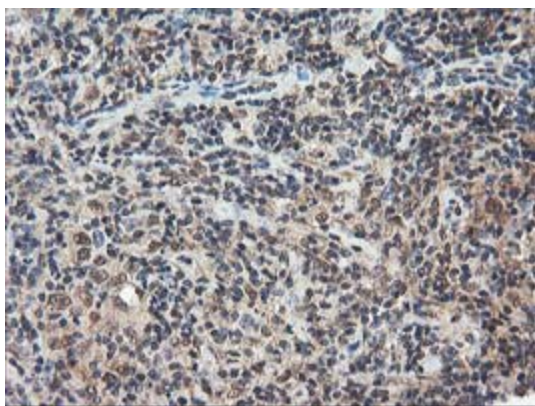
Immunohistochemical staining of paraffin-embedded Adenocarcinoma of Human endometrium tissue using anti-NUDT18 mouse monoclonal antibody. (Heat-induced epitope retrieval by 10mM citric buffer, pH6.0, 100°C for 10min, TA503847)



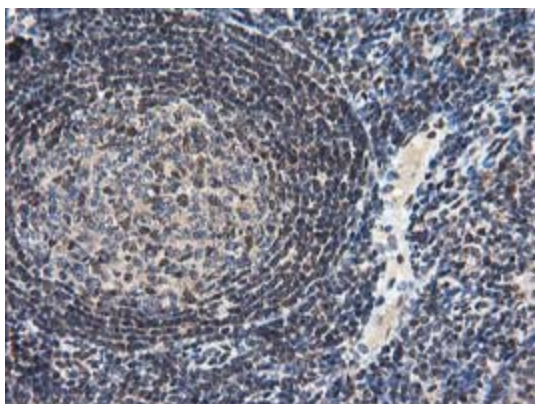
Immunohistochemical staining of paraffin-embedded Human prostate tissue within the normal limits using anti-NUDT18 mouse monoclonal antibody. (Heat-induced epitope retrieval by 10mM citric buffer, pH6.0, 100°C for 10min, TA503847)



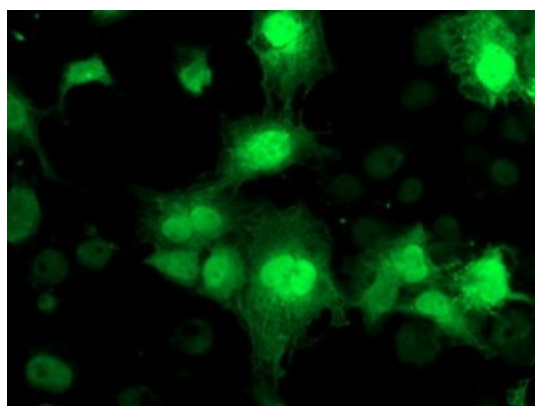
Immunohistochemical staining of paraffin-embedded Carcinoma of Human bladder tissue using anti-NUDT18 mouse monoclonal antibody. (Heat-induced epitope retrieval by 10mM citric buffer, pH6.0, 100°C for 10min, TA503847)



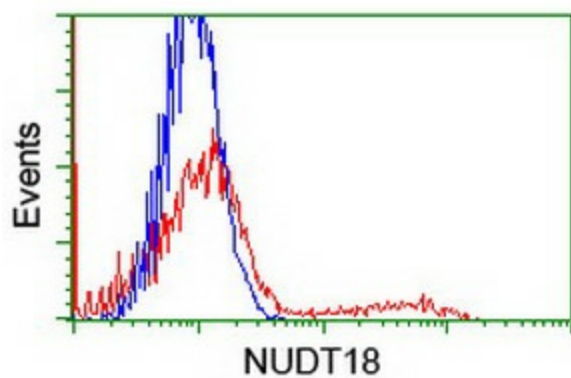
Immunohistochemical staining of paraffin-embedded Human lymphoma tissue using anti-NUDT18 mouse monoclonal antibody. (Heat-induced epitope retrieval by 10mM citric buffer, pH6.0, 100°C for 10min, TA503847)



Immunohistochemical staining of paraffin-embedded Human tonsil within the normal limits using anti-NUDT18 mouse monoclonal antibody. (Heat-induced epitope retrieval by 10mM citric buffer, pH6.0, 100°C for 10min, TA503847)



Anti-NUDT18 mouse monoclonal antibody (TA503847) immunofluorescent staining of COS7 cells transiently transfected by pCMV6-ENTRY NUDT18 ([RC204376]).



HEK293T cells transfected with either [RC204376] overexpress plasmid (Red) or empty vector control plasmid (Blue) were immunostained by anti-NUDT18 antibody (TA503847), and then analyzed by flow cytometry.