

## Product datasheet for **TA503779**

### **LXN Mouse Monoclonal Antibody [Clone ID: OT11E10]**

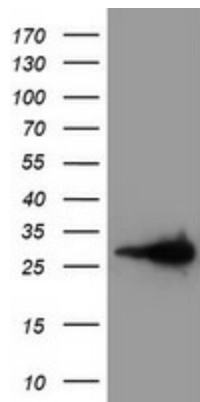
#### **Product data:**

<b>Product Type:</b>	Primary Antibodies
<b>Clone Name:</b>	OT11E10
<b>Applications:</b>	FC, IHC, WB
<b>Recommend Dilution:</b>	WB 1:2000, IHC 1:150, FLOW 1:100
<b>Reactivity:</b>	Human
<b>Host:</b>	Mouse
<b>Isotype:</b>	IgG1
<b>Clonality:</b>	Monoclonal
<b>Immunogen:</b>	Full length human recombinant protein of human LXN(NP_064554) produced in HEK293T cell.
<b>Formulation:</b>	PBS (PH 7.3) containing 1% BSA, 50% glycerol and 0.02% sodium azide.
<b>Concentration:</b>	1 mg/ml
<b>Purification:</b>	Purified from mouse ascites fluids or tissue culture supernatant by affinity chromatography (protein A/G)
<b>Predicted Protein Size:</b>	25.6 kDa
<b>Gene Name:</b>	latexin
<b>Database Link:</b>	<a href="#">NP_064554</a> <a href="#">Entrez Gene 56925</a> <a href="#">Human</a>
<b>Background:</b>	This gene encodes the only known protein inhibitor of zinc-dependent metalloproteinases. [provided by RefSeq]
<b>Synonyms:</b>	ECl; TCl

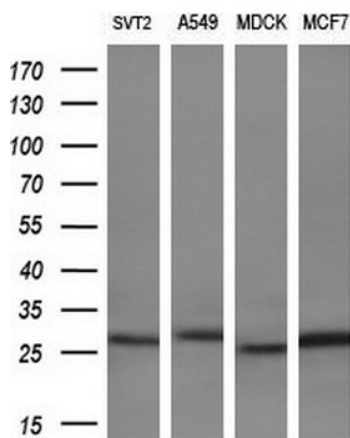


[View online »](#)

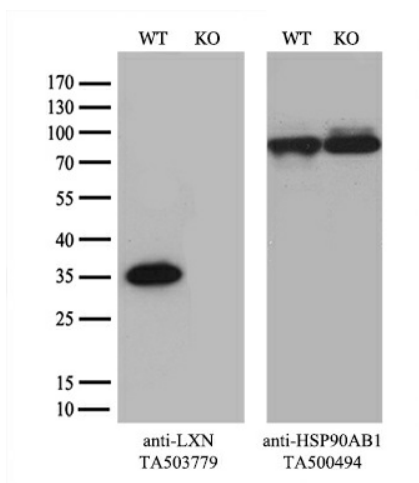
Product images:



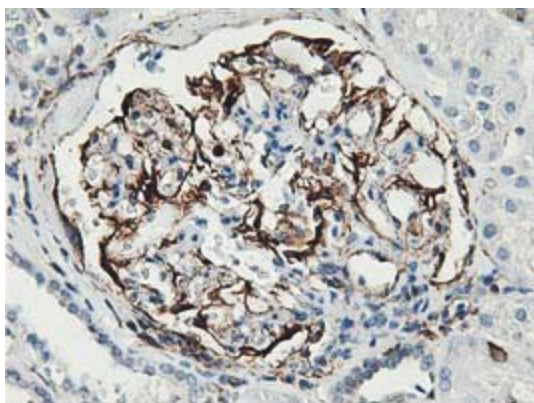
HEK293T cells were transfected with the pCMV6-ENTRY control (Left lane) or pCMV6-ENTRY LXN ([RC202769], Right lane) cDNA for 48 hrs and lysed. Equivalent amounts of cell lysates (5 ug per lane) were separated by SDS-PAGE and immunoblotted with anti-LXN. Positive lysates [LY412596] (100ug) and [LC412596] (20ug) can be purchased separately from OriGene.



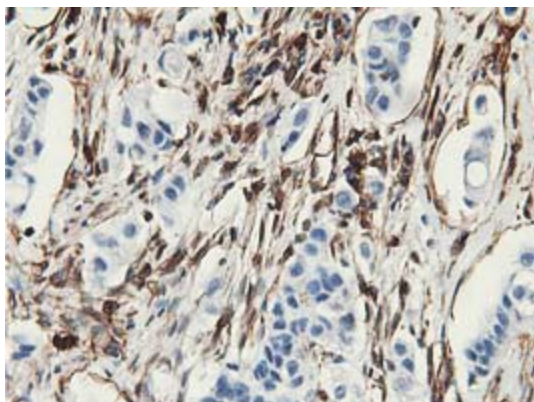
Western blot analysis of extracts (10ug) from 4 different cell lines by using anti-LXN monoclonal antibody (1:200).



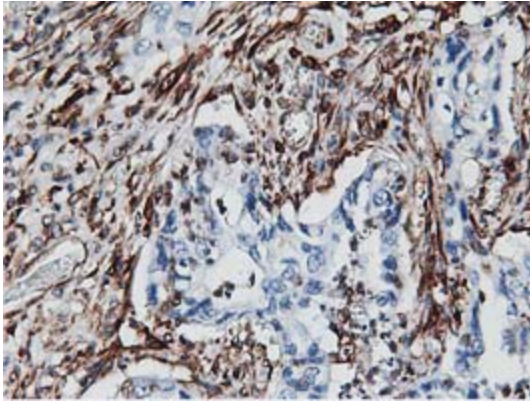
Equivalent amounts of cell lysates (10 ug per lane) of wild-type HeLa cells (WT, Cat# LC810HELA) and LXN-Knockout HeLa cells (KO, Cat# [LC812573]) were separated by SDS-PAGE and immunoblotted with anti-LXN monoclonal antibody TA503779 (1:500<sup>\*</sup>). Then the blotted membrane was stripped and reprobed with anti-HSP90 antibody as a loading control.



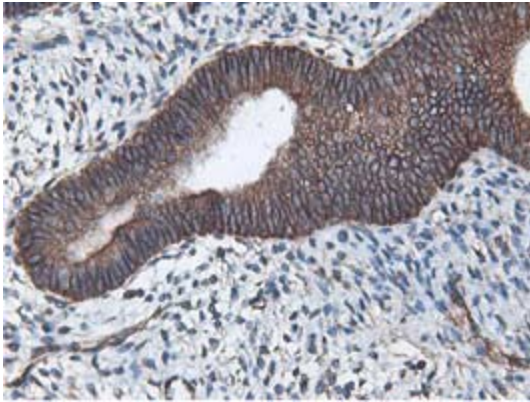
Immunohistochemical staining of paraffin-embedded Human Kidney tissue within the normal limits using anti-LXN mouse monoclonal antibody. (Heat-induced epitope retrieval by 10mM citric buffer, pH6.0, 100°C for 10min, TA503779)



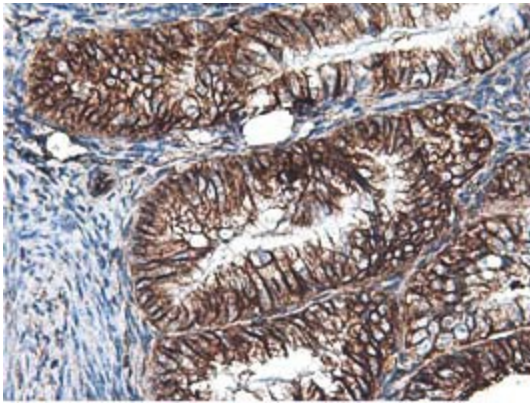
Immunohistochemical staining of paraffin-embedded Carcinoma of Human lung tissue using anti-LXN mouse monoclonal antibody. (Heat-induced epitope retrieval by 10mM citric buffer, pH6.0, 100°C for 10min, TA503779)



Immunohistochemical staining of paraffin-embedded Carcinoma of Human pancreas tissue using anti-LXN mouse monoclonal antibody. (Heat-induced epitope retrieval by 10mM citric buffer, pH6.0, 100°C for 10min, TA503779)

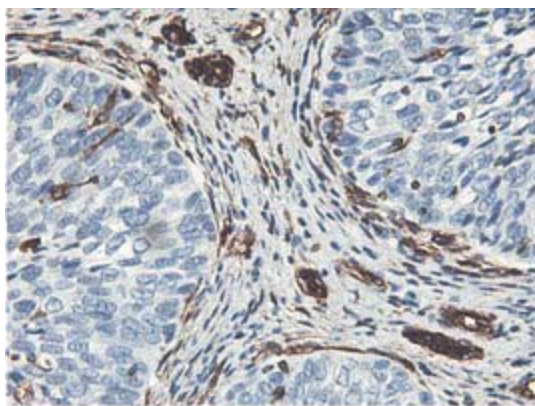


Immunohistochemical staining of paraffin-embedded Human endometrium tissue within the normal limits using anti-LXN mouse monoclonal antibody. (Heat-induced epitope retrieval by 10mM citric buffer, pH6.0, 100°C for 10min, TA503779)

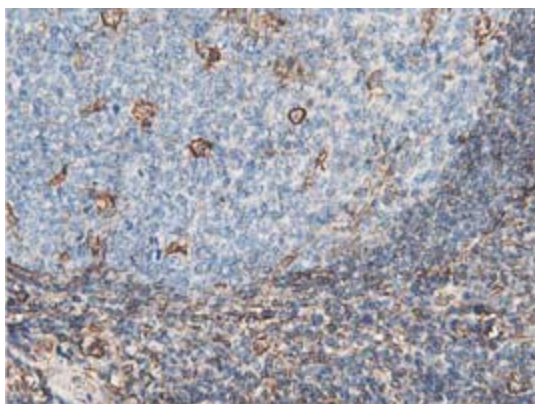


Immunohistochemical staining of paraffin-embedded Adenocarcinoma of Human endometrium tissue using anti-LXN mouse monoclonal antibody. (Heat-induced epitope retrieval by 10mM citric buffer, pH6.0, 100°C for 10min, TA503779)

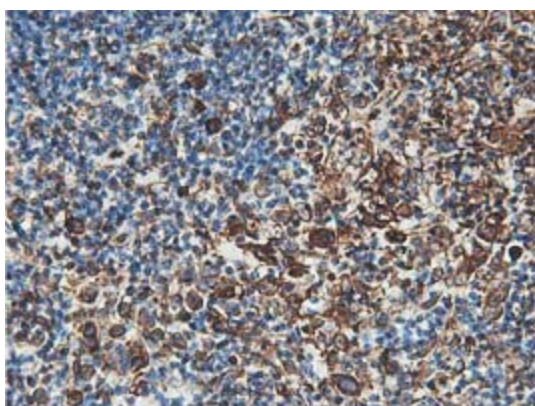




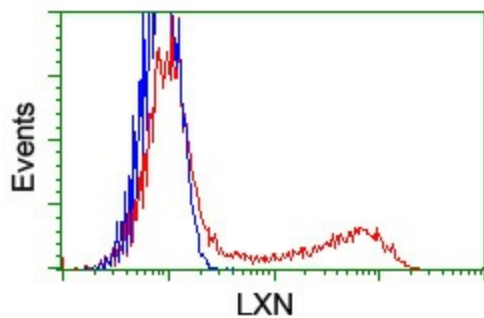
Immunohistochemical staining of paraffin-embedded Carcinoma of Human bladder tissue using anti-LXN mouse monoclonal antibody. (Heat-induced epitope retrieval by 10mM citric buffer, pH6.0, 100°C for 10min, TA503779)



Immunohistochemical staining of paraffin-embedded Human lymph node tissue within the normal limits using anti-LXN mouse monoclonal antibody. (Heat-induced epitope retrieval by 10mM citric buffer, pH6.0, 100°C for 10min, TA503779)



Immunohistochemical staining of paraffin-embedded Human lymphoma tissue using anti-LXN mouse monoclonal antibody. (Heat-induced epitope retrieval by 10mM citric buffer, pH6.0, 100°C for 10min, TA503779)



HEK293T cells transfected with either [RC202769] overexpress plasmid (Red) or empty vector control plasmid (Blue) were immunostained by anti-LXN antibody (TA503779), and then analyzed by flow cytometry.