

Product datasheet for TA503700

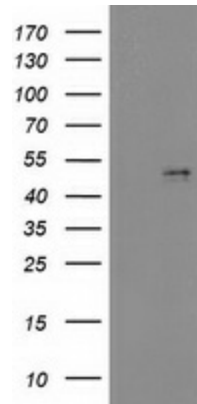
SCDGF (PDGFD) Mouse Monoclonal Antibody [Clone ID: OT1C1]

Product data:

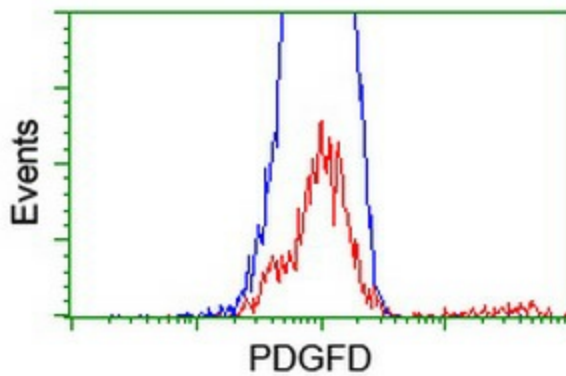
Product Type:	Primary Antibodies
Clone Name:	OT1C1
Applications:	FC, WB
Recommend Dilution:	WB 1:2000, FLOW 1:100
Reactivity:	Human
Host:	Mouse
Isotype:	IgG1
Clonality:	Monoclonal
Immunogen:	Human recombinant protein fragment corresponding to amino acids 19-247 of human PDGFD(NP_079484) produced in E.coli.
Formulation:	PBS (PH 7.3) containing 1% BSA, 50% glycerol and 0.02% sodium azide.
Concentration:	0.97 mg/ml
Purification:	Purified from mouse ascites fluids or tissue culture supernatant by affinity chromatography (protein A/G)
Predicted Protein Size:	40.2 kDa
Gene Name:	platelet derived growth factor D
Database Link:	NP_079484 Entrez Gene 80310 Human
Background:	The protein encoded by this gene is a member of the platelet-derived growth factor family. The four members of this family are mitogenic factors for cells of mesenchymal origin and are characterized by a core motif of eight cysteines, seven of which are found in this factor. This gene product only forms homodimers and, therefore, does not dimerize with the other three family members. It differs from alpha and beta members of this family in having an unusual N-terminal domain, the CUB domain. Two splice variants have been identified for this gene. [provided by RefSeq]
Synonyms:	IEGF; MSTP036; SCDGF-B; SCDGF
Protein Families:	Druggable Genome, Secreted Protein
Protein Pathways:	Focal adhesion, Gap junction, Melanoma, Prostate cancer, Regulation of actin cytoskeleton



[View online »](#)

Product images:

HEK293T cells were transfected with the pCMV6-ENTRY control (Left lane) or pCMV6-ENTRY PDGFD [RC219641], Right lane) cDNA for 48 hrs and lysed. Equivalent amounts of cell lysates (5 ug per lane) were separated by SDS-PAGE and immunoblotted with anti-PDGFD. Positive lysates [LY403061] (100ug) and [LC403061] (20ug) can be purchased separately from OriGene.



HEK293T cells transfected with either [RC219641] overexpress plasmid (Red) or empty vector control plasmid (Blue) were immunostained by anti-PDGFD antibody (TA503700), and then analyzed by flow cytometry.