

Product datasheet for TA503340

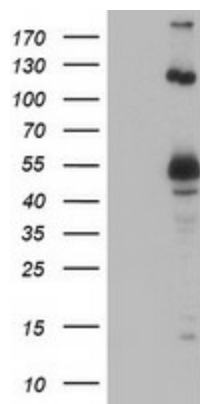
UBOX5 Mouse Monoclonal Antibody [Clone ID: OT11C5]

Product data:

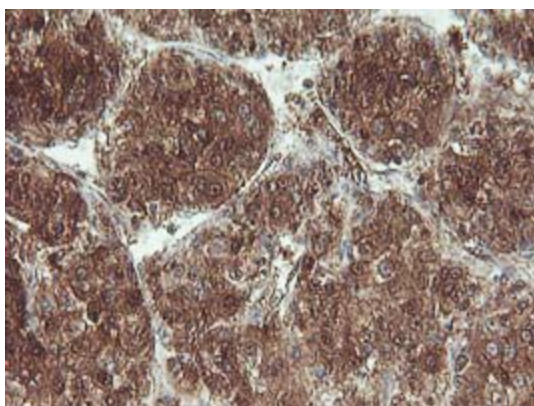
Product Type:	Primary Antibodies
Clone Name:	OT11C5
Applications:	FC, IF, IHC, WB
Recommend Dilution:	WB 1:200~500, IHC 1:150, FLOW 1:100, IF: 1:100
Reactivity:	Human
Host:	Mouse
Isotype:	IgG2a
Clonality:	Monoclonal
Immunogen:	Human recombinant protein fragment corresponding to amino acids 1-130 and C 419-487 of human UBOX5(NP_955447) produced in E.coli.
Formulation:	PBS (PH 7.3) containing 1% BSA, 50% glycerol and 0.02% sodium azide.
Concentration:	1 mg/ml
Purification:	Purified from mouse ascites fluids or tissue culture supernatant by affinity chromatography (protein A/G)
Gene Name:	U-box domain containing 5
Database Link:	NP_955447 Entrez Gene 22888 Human
Synonyms:	hUIP5; RNF37; UBCE7IP5; UIP5
Protein Families:	Druggable Genome
Protein Pathways:	Ubiquitin mediated proteolysis



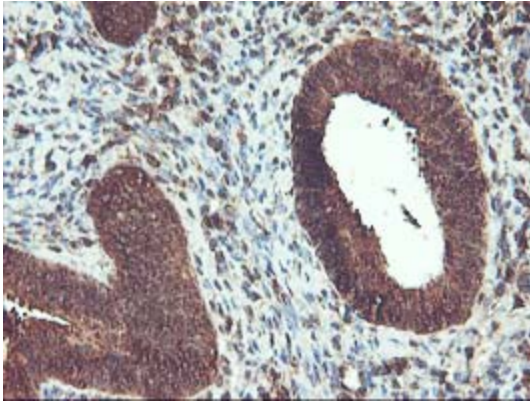
[View online »](#)

Product images:

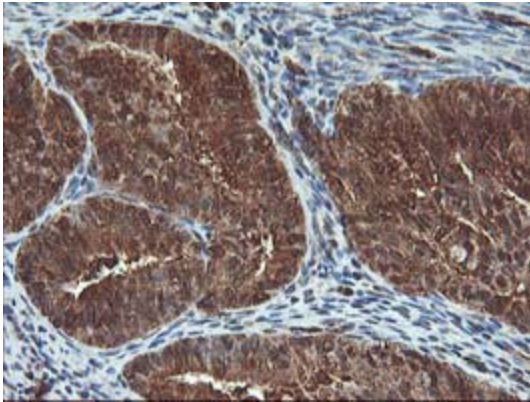
HEK293T cells were transfected with the pCMV6-ENTRY control (Left lane) or pCMV6-ENTRY UBOX5 [RC208505], Right lane) cDNA for 48 hrs and lysed. Equivalent amounts of cell lysates (5 ug per lane) were separated by SDS-PAGE and immunoblotted with anti-UBOX5.



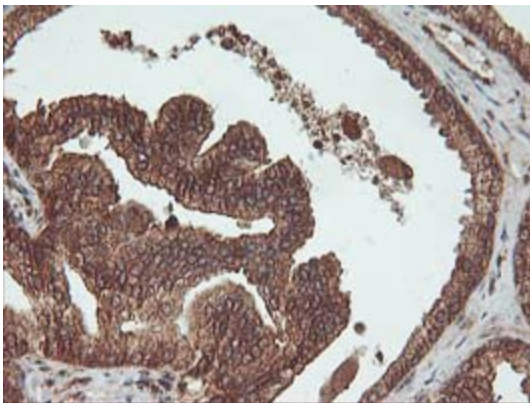
Immunohistochemical staining of paraffin-embedded Carcinoma of Human liver tissue using anti-UBOX5 mouse monoclonal antibody. (Heat-induced epitope retrieval by 10mM citric buffer, pH6.0, 100°C for 10min, TA503340)



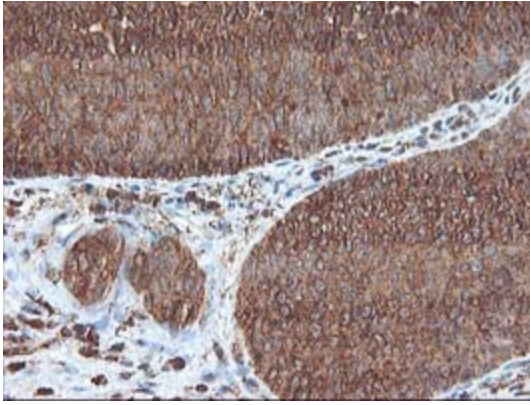
Immunohistochemical staining of paraffin-embedded Human endometrium tissue within the normal limits using anti-UBOX5 mouse monoclonal antibody. (Heat-induced epitope retrieval by 10mM citric buffer, pH6.0, 100°C for 10min, TA503340)



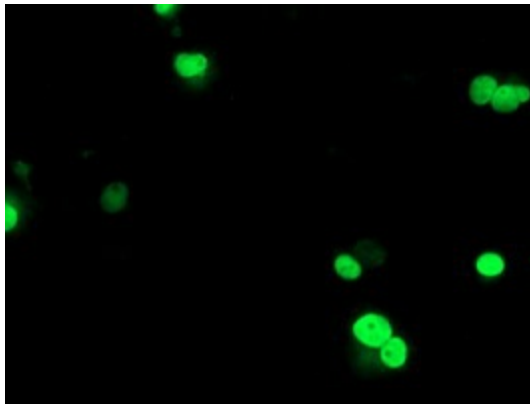
Immunohistochemical staining of paraffin-embedded Adenocarcinoma of Human endometrium tissue using anti-UBOX5 mouse monoclonal antibody. (Heat-induced epitope retrieval by 10mM citric buffer, pH6.0, 100°C for 10min, TA503340)



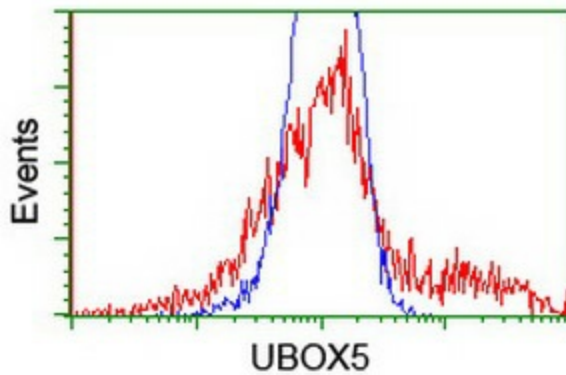
Immunohistochemical staining of paraffin-embedded Carcinoma of Human prostate tissue using anti-UBOX5 mouse monoclonal antibody. (Heat-induced epitope retrieval by 10mM citric buffer, pH6.0, 100°C for 10min, TA503340)



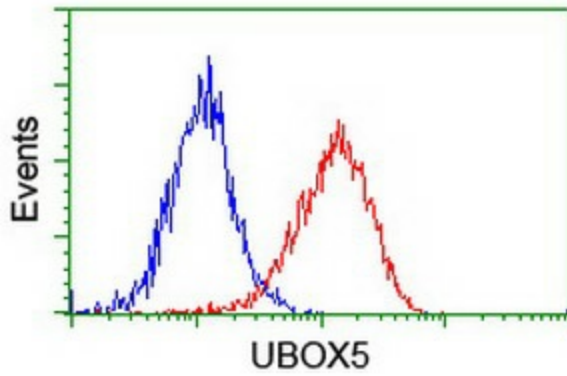
Immunohistochemical staining of paraffin-embedded Carcinoma of Human bladder tissue using anti-UBOX5 mouse monoclonal antibody. (Heat-induced epitope retrieval by 10mM citric buffer, pH6.0, 100°C for 10min, TA503340)



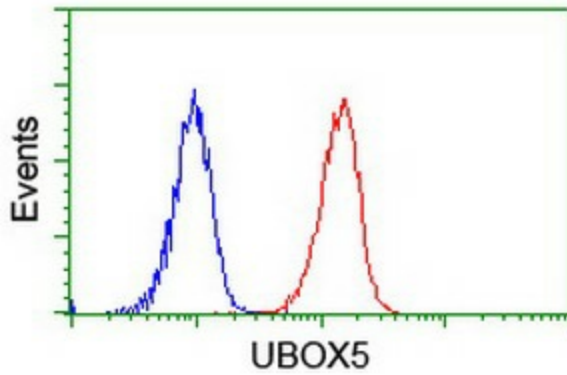
Anti-UBOX5 mouse monoclonal antibody (TA503340) immunofluorescent staining of COS7 cells transiently transfected by pCMV6-ENTRY UBOX5 ([RC208505]).



HEK293T cells transfected with either [RC208505] overexpress plasmid (Red) or empty vector control plasmid (Blue) were immunostained by anti-UBOX5 antibody (TA503340), and then analyzed by flow cytometry.



Flow cytometric Analysis of HeLa cells, using anti-UBOX5 antibody (TA503340), (Red), compared to a nonspecific negative control antibody, (Blue).



Flow cytometric Analysis of Jurkat cells, using anti-UBOX5 antibody (TA503340), (Red), compared to a nonspecific negative control antibody, (Blue).