

Product datasheet for TA503186

CRALBP (RLBP1) Mouse Monoclonal Antibody [Clone ID: OTI1G6]

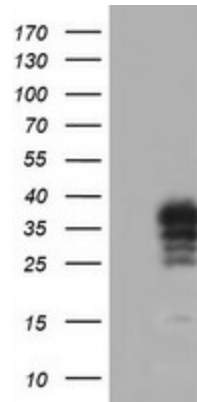
Product data:

Product Type:	Primary Antibodies
Clone Name:	OTI1G6
Applications:	FC, IHC, WB
Recommend Dilution:	WB 1:2000, IHC 1:150, FLOW 1:100
Reactivity:	Human
Host:	Mouse
Isotype:	IgG2a
Clonality:	Monoclonal
Immunogen:	Full length human recombinant protein of human RLBP1(NP_000317) produced in HEK293T cell.
Formulation:	PBS (PH 7.3) containing 1% BSA, 50% glycerol and 0.02% sodium azide.
Concentration:	1.11 mg/ml
Purification:	Purified from mouse ascites fluids or tissue culture supernatant by affinity chromatography (protein A/G)
Predicted Protein Size:	36.3 kDa
Gene Name:	retinaldehyde binding protein 1
Database Link:	NP_000317 Entrez Gene 6017 Human
Background:	The protein encoded by this gene is a 36-kD water-soluble protein which carries 11-cis-retinaldehyde or 11-cis-retinal as physiologic ligands. It may be a functional component of the visual cycle. Mutations of this gene have been associated with severe rod-cone dystrophy, Bothnia dystrophy (nonsyndromic autosomal recessive retinitis pigmentosa) and retinitis punctata albescens. [provided by RefSeq]
Synonyms:	CRALBP
Protein Families:	Druggable Genome

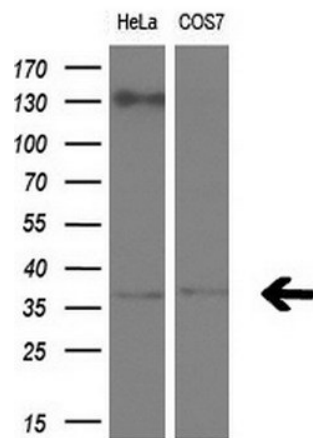


[View online »](#)

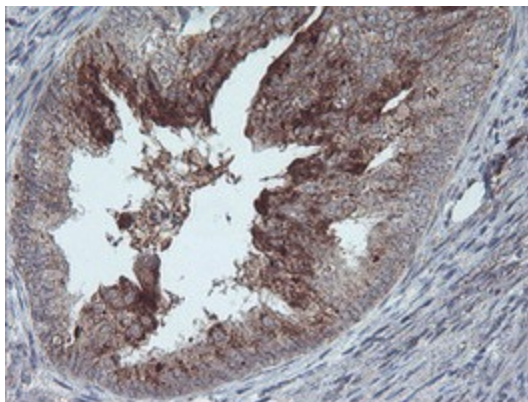
Product images:



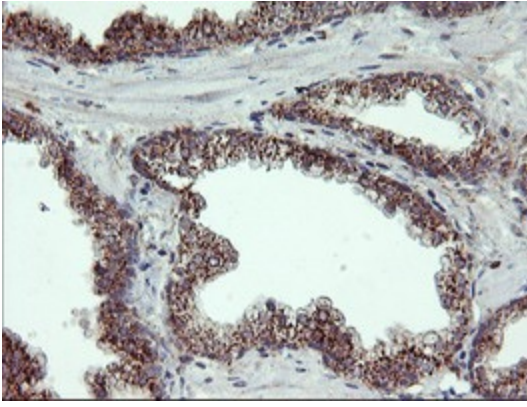
HEK293T cells were transfected with the pCMV6-ENTRY control (Left lane) or pCMV6-ENTRY RLBP1 ([RC201136], Right lane) cDNA for 48 hrs and lysed. Equivalent amounts of cell lysates (5 ug per lane) were separated by SDS-PAGE and immunoblotted with anti-RLBP1. Positive lysates [LY424794] (100ug) and [LC424794] (20ug) can be purchased separately from OriGene.



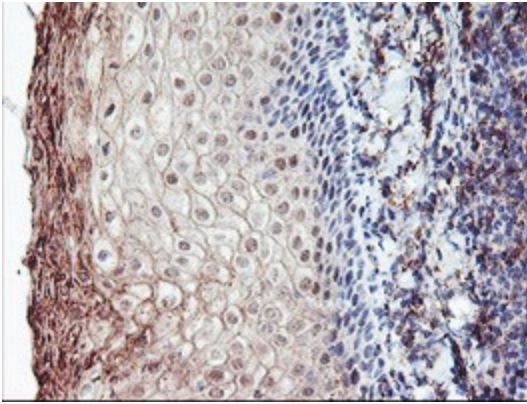
Western blot analysis of extracts (10ug) from 2 different cell lines by using anti-RLBP1 monoclonal antibody at 1:200 dilution.



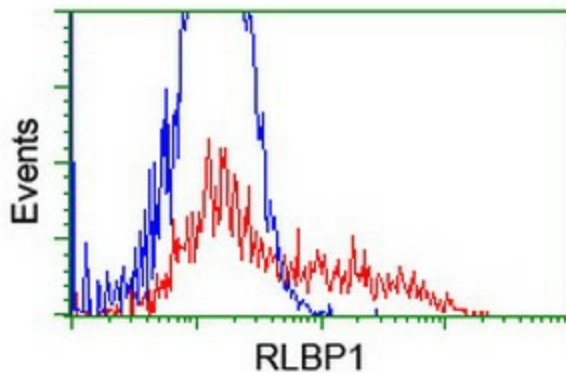
Immunohistochemical staining of paraffin-embedded Adenocarcinoma of Human endometrium tissue using anti-RLBP1 mouse monoclonal antibody. (Heat-induced epitope retrieval by 10mM citric buffer, pH6.0, 100°C for 10min, TA503186)



Immunohistochemical staining of paraffin-embedded Carcinoma of Human prostate tissue using anti-RLBP1 mouse monoclonal antibody. (Heat-induced epitope retrieval by 10mM citric buffer, pH6.0, 100°C for 10min, TA503186)



Immunohistochemical staining of paraffin-embedded Human tonsil within the normal limits using anti-RLBP1 mouse monoclonal antibody. (Heat-induced epitope retrieval by 10mM citric buffer, pH6.0, 100°C for 10min, TA503186)



HEK293T cells transfected with either [RC201136] overexpress plasmid (Red) or empty vector control plasmid (Blue) were immunostained by anti-RLBP1 antibody (TA503186), and then analyzed by flow cytometry.