

Product datasheet for TA503152

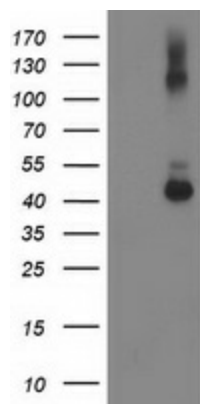
GDAP1L1 Mouse Monoclonal Antibody [Clone ID: OT11C3]

Product data:

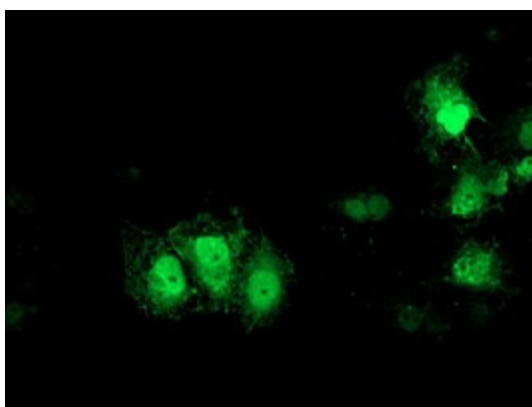
Product Type:	Primary Antibodies
Clone Name:	OT11C3
Applications:	IF, WB
Recommend Dilution:	WB 1:2000, IF 1:100
Reactivity:	Human
Host:	Mouse
Isotype:	IgG1
Clonality:	Monoclonal
Immunogen:	Full length human recombinant protein of human GDAP1L1 (NP_076939) produced in HEK293T cell.
Formulation:	PBS (PH 7.3) containing 1% BSA, 50% glycerol and 0.02% sodium azide.
Concentration:	0.41 mg/ml
Purification:	Purified from mouse ascites fluids or tissue culture supernatant by affinity chromatography (protein A/G)
Predicted Protein Size:	41.8 kDa
Gene Name:	ganglioside induced differentiation associated protein 1 like 1
Database Link:	NP_076939 Entrez Gene 78997 Human
Background:	The ganglioside GD3 synthase causes cell differentiation with neurite sprouting when transfected into the mouse neuroblastoma cell line Neuro2a. After differentiation, the expression of several genes is upregulated, including one that encodes a protein termed ganglioside-induced differentiation-associated protein 1 (Gdap1). A similar gene was found in humans, and mutations in the human gene are associated with Charcot-Marie-Tooth type 4A disease. The protein encoded by this gene is similar in sequence to the human GDAP1 protein. [provided by RefSeq]. COMPLETENESS: complete on the 3' end.
Synonyms:	dj881L22.1; dj995J12.1.1
Protein Families:	Transmembrane



[View online »](#)

Product images:

HEK293T cells were transfected with the pCMV6-ENTRY control (Left lane) or pCMV6-ENTRY GDAP1L1 ([RC200976], Right lane) cDNA for 48 hrs and lysed. Equivalent amounts of cell lysates (5 ug per lane) were separated by SDS-PAGE and immunoblotted with anti-GDAP1L1. Positive lysates [LY411411] (100ug) and [LC411411] (20ug) can be purchased separately from OriGene.



Anti-GDAP1L1 mouse monoclonal antibody (TA503152) immunofluorescent staining of COS7 cells transiently transfected by pCMV6-ENTRY GDAP1L1 ([RC200976]).