

Product datasheet for TA503120

LSM1 Mouse Monoclonal Antibody [Clone ID: OTI5C6]

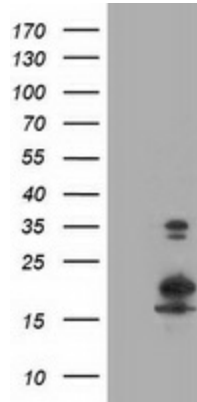
Product data:

Product Type:	Primary Antibodies
Clone Name:	OTI5C6
Applications:	FC, IF, IHC, WB
Recommend Dilution:	WB 1:500~2000, IHC 1:150, IF 1:100, FLOW 1:100
Reactivity:	Human, Dog
Host:	Mouse
Isotype:	IgG2b
Clonality:	Monoclonal
Immunogen:	Full length human recombinant protein of human LSM1 (NP_055277) produced in HEK293T cell.
Formulation:	PBS (PH 7.3) containing 1% BSA, 50% glycerol and 0.02% sodium azide.
Concentration:	1 mg/ml
Purification:	Purified from mouse ascites fluids or tissue culture supernatant by affinity chromatography (protein A/G)
Predicted Protein Size:	15 kDa
Gene Name:	LSM1 homolog, mRNA degradation associated
Database Link:	NP_055277 Entrez Gene 475587 DogEntrez Gene 27257 Human
Background:	Sm-like proteins were identified in a variety of organisms based on sequence homology with the Sm protein family (see SNRPD2; MIM 601061). Sm-like proteins contain the Sm sequence motif, which consists of 2 regions separated by a linker of variable length that folds as a loop. The Sm-like proteins are thought to form a stable heteromer present in tri-snRNP particles, which are important for pre-mRNA splicing. [supplied by OMIM]
Synonyms:	CASM; YJL124C
Protein Families:	Stem cell - Pluripotency
Protein Pathways:	RNA degradation

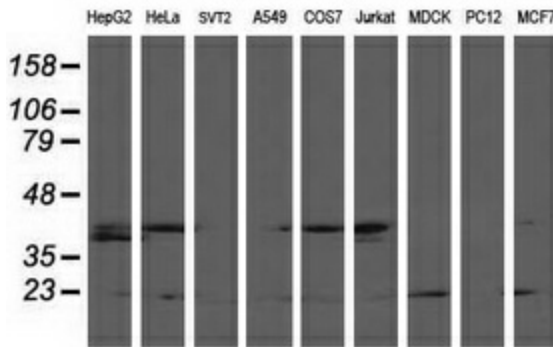


[View online »](#)

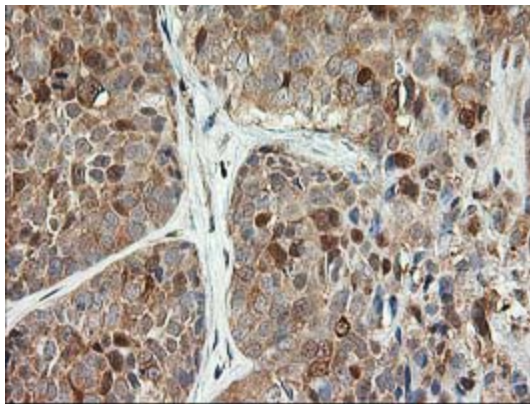
Product images:



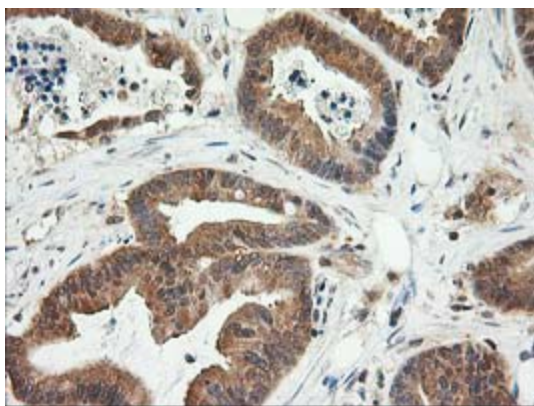
HEK293T cells were transfected with the pCMV6-ENTRY control (Left lane) or pCMV6-ENTRY LSM1 ([RC200288], Right lane) cDNA for 48 hrs and lysed. Equivalent amounts of cell lysates (5 ug per lane) were separated by SDS-PAGE and immunoblotted with anti-LSM1. Positive lysates [LY415265] (100ug) and [LC415265] (20ug) can be purchased separately from OriGene.



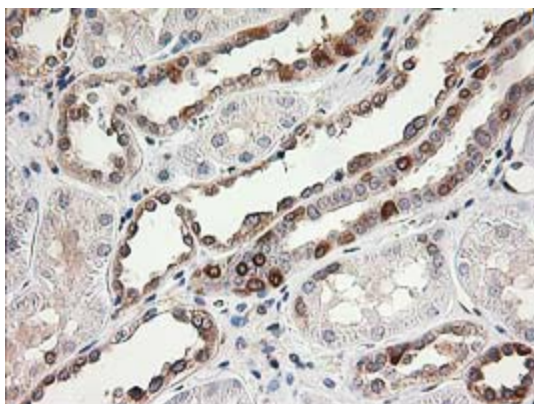
Western blot analysis of extracts (35ug) from 9 different cell lines by using anti-LSM1 monoclonal antibody.



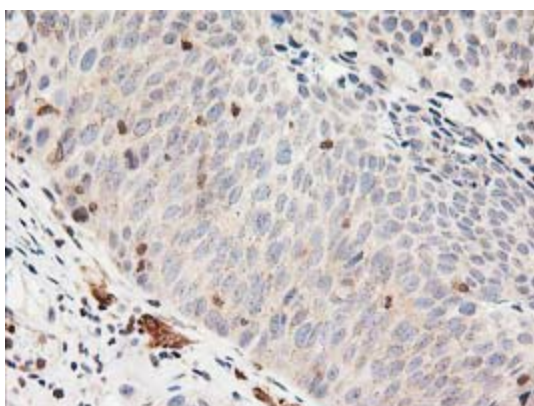
Immunohistochemical staining of paraffin-embedded Adenocarcinoma of Human breast tissue using anti-LSM1 mouse monoclonal antibody. (Heat-induced epitope retrieval by 10mM citric buffer, pH6.0, 100°C for 10min, TA503120)



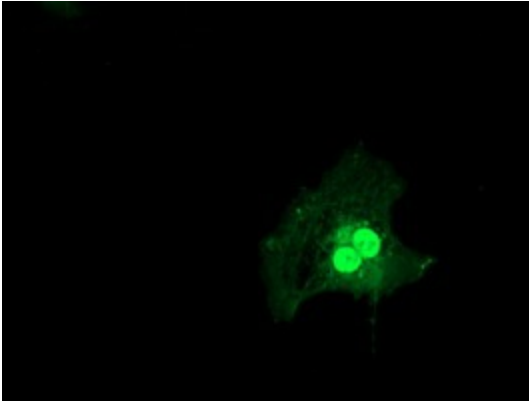
Immunohistochemical staining of paraffin-embedded Adenocarcinoma of Human colon tissue using anti-LSM1 mouse monoclonal antibody. (Heat-induced epitope retrieval by 10mM citric buffer, pH6.0, 100°C for 10min, TA503120)



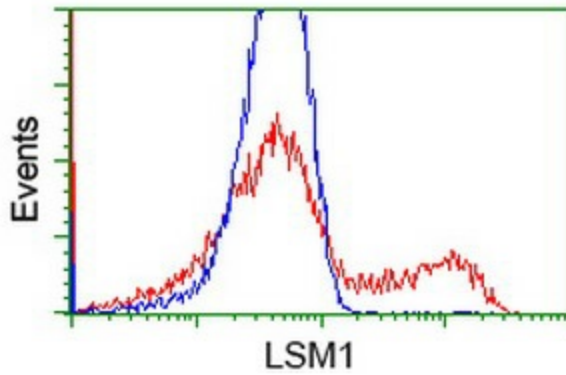
Immunohistochemical staining of paraffin-embedded Human Kidney tissue within the normal limits using anti-LSM1 mouse monoclonal antibody. (Heat-induced epitope retrieval by 10mM citric buffer, pH6.0, 100°C for 10min, TA503120)



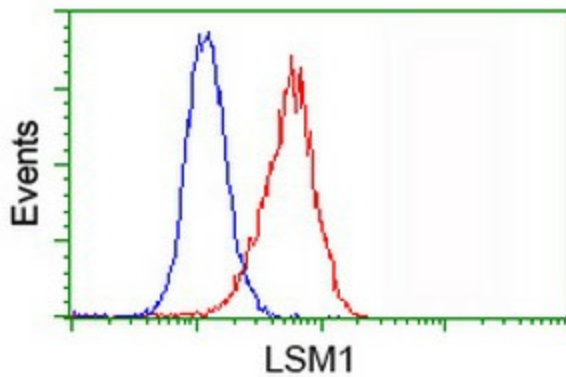
Immunohistochemical staining of paraffin-embedded Carcinoma of Human bladder tissue using anti-LSM1 mouse monoclonal antibody. (Heat-induced epitope retrieval by 10mM citric buffer, pH6.0, 100°C for 10min, TA503120)



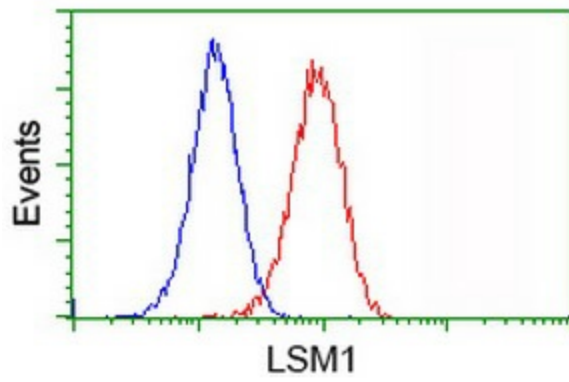
Anti-LSM1 mouse monoclonal antibody (TA503120) immunofluorescent staining of COS7 cells transiently transfected by pCMV6-ENTRY LSM1 ([RC200288]).



HEK293T cells transfected with either [RC200288] overexpress plasmid (Red) or empty vector control plasmid (Blue) were immunostained by anti-LSM1 antibody (TA503120), and then analyzed by flow cytometry.



Flow cytometric Analysis of HeLa cells, using anti-LSM1 antibody (TA503120), (Red), compared to a nonspecific negative control antibody, (Blue).



Flow cytometric Analysis of Jurkat cells, using anti-LSM1 antibody (TA503120), (Red), compared to a nonspecific negative control antibody, (Blue).