

Product datasheet for TA502905

CRY2 Mouse Monoclonal Antibody [Clone ID: OTI1H5]

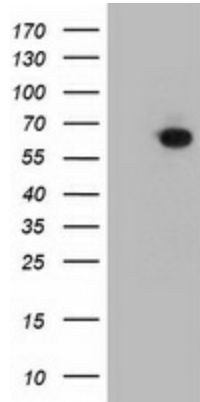
Product data:

| | |
|-------------------------|---|
| Product Type: | Primary Antibodies |
| Clone Name: | OTI1H5 |
| Applications: | FC, IF, IHC, WB |
| Recommend Dilution: | WB 1:2000, IHC 1:150, IF 1:100, FLOW 1:100 |
| Reactivity: | Human |
| Host: | Mouse |
| Isotype: | IgG2a |
| Clonality: | Monoclonal |
| Immunogen: | Full length human recombinant protein of human CRY2 (NP_0066940) produced in HEK293T cell. |
| Formulation: | PBS (PH 7.3) containing 1% BSA, 50% glycerol and 0.02% sodium azide. |
| Concentration: | 0.78 mg/ml |
| Purification: | Purified from mouse ascites fluids or tissue culture supernatant by affinity chromatography (protein A/G) |
| Predicted Protein Size: | 66.8 kDa |
| Gene Name: | cryptochrome circadian regulator 2 |
| Database Link: | NP_066940 Entrez Gene 1408 Human |
| Synonyms: | HCRY2; PHLL2 |
| Protein Families: | Druggable Genome |
| Protein Pathways: | Circadian rhythm - mammal |

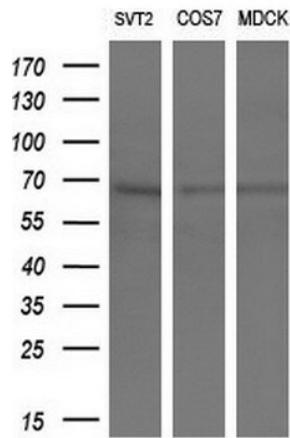


[View online »](#)

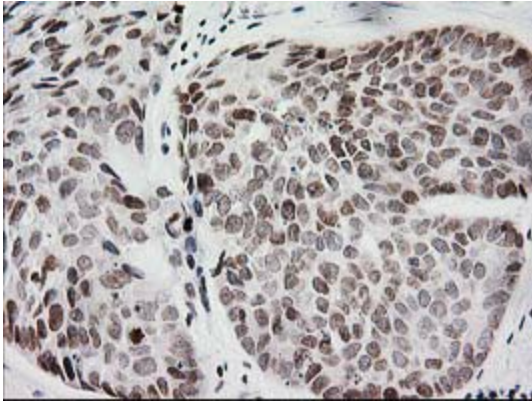
Product images:



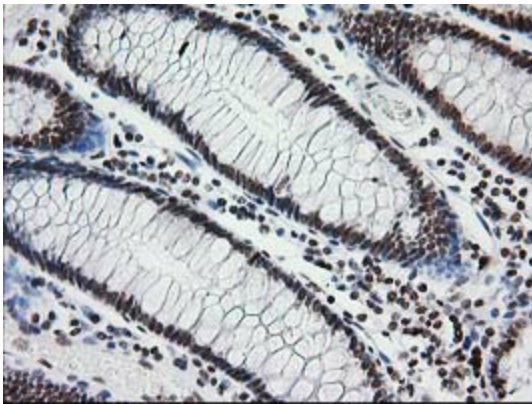
HEK293T cells were transfected with the pCMV6-ENTRY control (Left lane) or pCMV6-ENTRY CRY2 ([RC207337], Right lane) cDNA for 48 hrs and lysed. Equivalent amounts of cell lysates (5 ug per lane) were separated by SDS-PAGE and immunoblotted with anti-CRY2. Positive lysates [LY432326] (100ug) and [LC432326] (20ug) can be purchased separately from OriGene.



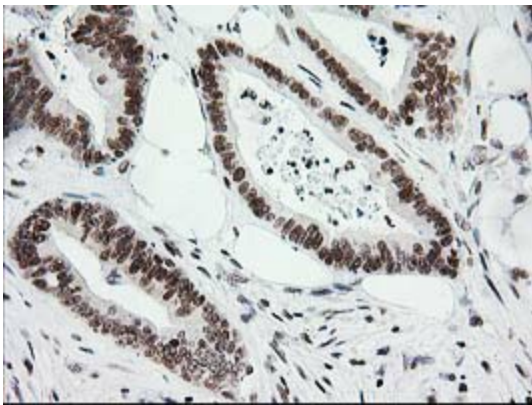
Western blot analysis of extracts (10ug) from 3 different cell lines by using anti-CRY2 monoclonal antibody (1:200).



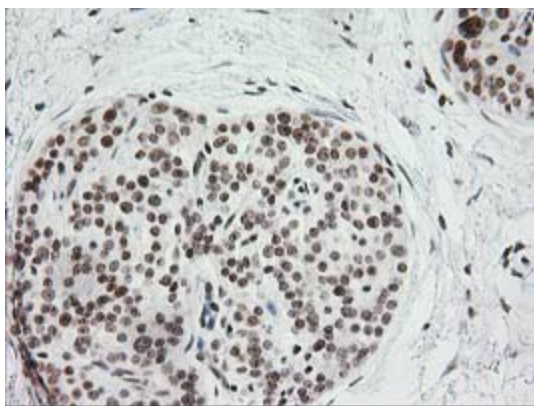
Immunohistochemical staining of paraffin-embedded Adenocarcinoma of Human breast tissue using anti-CRY2 mouse monoclonal antibody. (Heat-induced epitope retrieval by 10mM citric buffer, pH6.0, 100°C for 10min, TA502905)



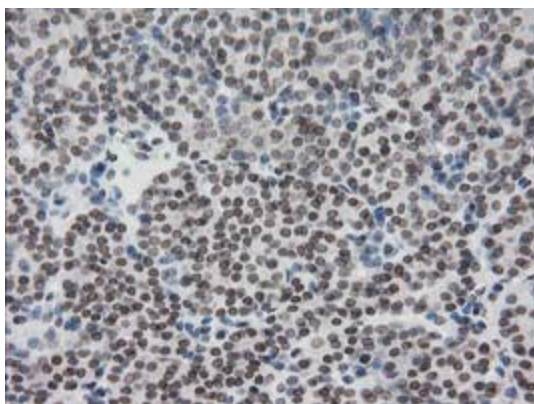
Immunohistochemical staining of paraffin-embedded Human colon tissue within the normal limits using anti-CRY2 mouse monoclonal antibody. (Heat-induced epitope retrieval by 10mM citric buffer, pH6.0, 100°C for 10min, TA502905)



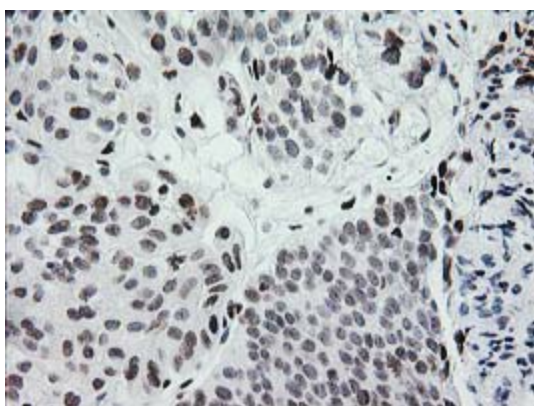
Immunohistochemical staining of paraffin-embedded Adenocarcinoma of Human colon tissue using anti-CRY2 mouse monoclonal antibody. (Heat-induced epitope retrieval by 10mM citric buffer, pH6.0, 100°C for 10min, TA502905)



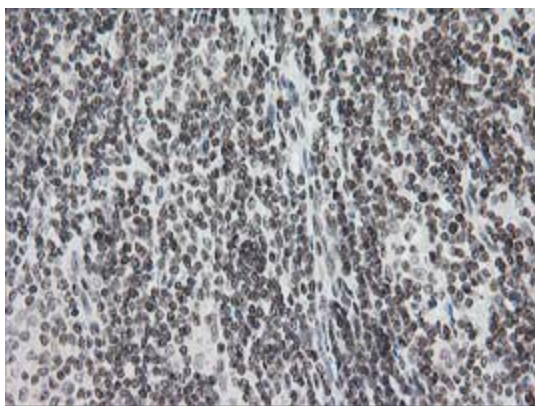
Immunohistochemical staining of paraffin-embedded Carcinoma of Human pancreas tissue using anti-CRY2 mouse monoclonal antibody. (Heat-induced epitope retrieval by 10mM citric buffer, pH6.0, 100°C for 10min, TA502905)



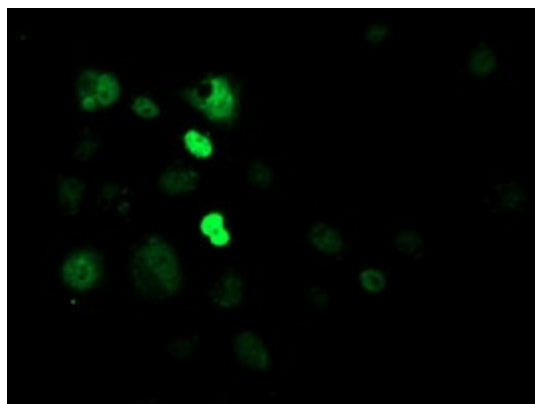
Immunohistochemical staining of paraffin-embedded Carcinoma of Human thyroid tissue using anti-CRY2 mouse monoclonal antibody. (Heat-induced epitope retrieval by 10mM citric buffer, pH6.0, 100°C for 10min, TA502905)



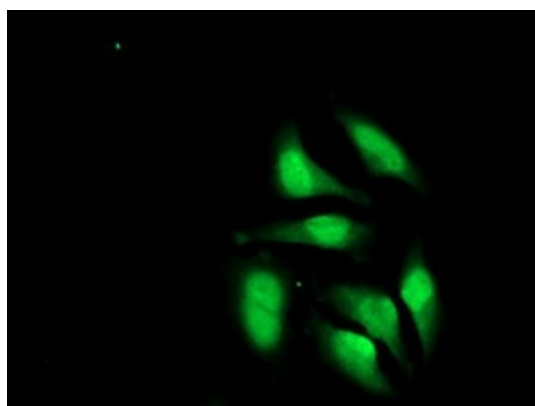
Immunohistochemical staining of paraffin-embedded Carcinoma of Human bladder tissue using anti-CRY2 mouse monoclonal antibody. (Heat-induced epitope retrieval by 10mM citric buffer, pH6.0, 100°C for 10min, TA502905)



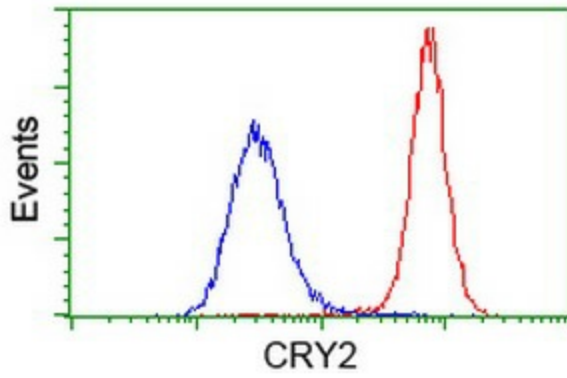
Immunohistochemical staining of paraffin-embedded Human lymphoma tissue using anti-CRY2 mouse monoclonal antibody. (Heat-induced epitope retrieval by 10mM citric buffer, pH6.0, 100°C for 10min, TA502905)



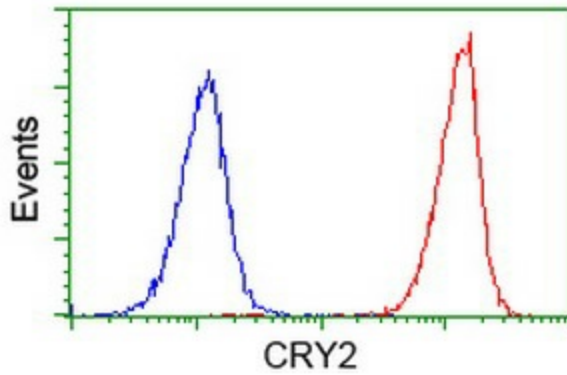
Anti-CRY2 mouse monoclonal antibody (TA502905) immunofluorescent staining of COS7 cells transiently transfected by pCMV6-ENTRY CRY2 ([RC207337]).



Immunofluorescent staining of HeLa cells using anti-CRY2 mouse monoclonal antibody (TA502905).



Flow cytometric Analysis of HeLa cells, using anti-CRY2 antibody (TA502905), (Red), compared to a nonspecific negative control antibody, (Blue).



Flow cytometric Analysis of Jurkat cells, using anti-CRY2 antibody (TA502905), (Red), compared to a nonspecific negative control antibody, (Blue).