

## Product datasheet for **TA502838**

### SNAP25 Mouse Monoclonal Antibody [Clone ID: OTI 1D5]

#### Product data:

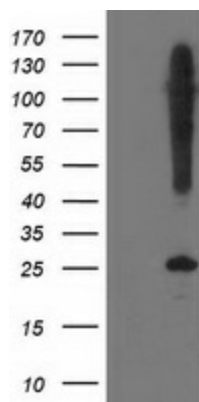
Product Type:	Primary Antibodies
Clone Name:	OTI 1D5
Applications:	FC, IF, IHC, WB
Recommend Dilution:	WB 1:2000, IHC 1:150, IF 1:100, FLOW 1:100
Reactivity:	Human
Host:	Mouse
Isotype:	IgG2a
Clonality:	Monoclonal
Immunogen:	Full length human recombinant protein of human SNAP25 (NP_003072) produced in HEK293T cell.
Formulation:	PBS (PH 7.3) containing 1% BSA, 50% glycerol and 0.02% sodium azide.
Concentration:	0.65 mg/ml
Purification:	Purified from mouse ascites fluids or tissue culture supernatant by affinity chromatography (protein A/G)
Predicted Protein Size:	23.2 kDa
Gene Name:	synaptosome associated protein 25
Database Link:	<a href="#">NP_003072 Entrez Gene 6616 Human</a>
Background:	Synaptic vesicle membrane docking and fusion is mediated by SNAREs (soluble N-ethylmaleimide-sensitive factor attachment protein receptors) located on the vesicle membrane (v-SNAREs) and the target membrane (t-SNAREs). The assembled v-SNARE/t-SNARE complex consists of a bundle of four helices, one of which is supplied by v-SNARE and the other three by t-SNARE. For t-SNAREs on the plasma membrane, the protein syntaxin supplies one helix and the protein encoded by this gene contributes the other two. Therefore, this gene product is a presynaptic plasma membrane protein involved in the regulation of neurotransmitter release. Two alternative transcript variants encoding different protein isoforms have been described for this gene. [provided by RefSeq, Jul 2008]
Synonyms:	bA416N4.2; dj1068F16.2; RIC-4; RIC4; SEC9; SNAP; SNAP-25
Protein Families:	Druggable Genome



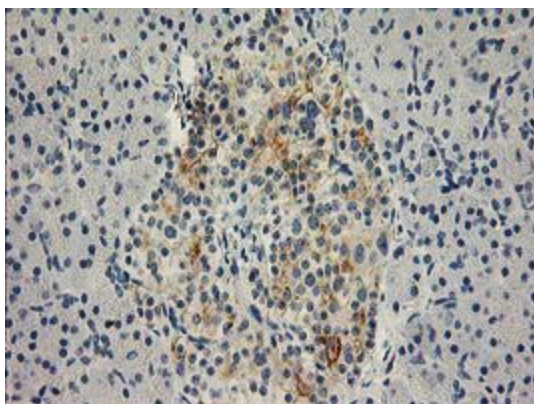
[View online »](#)

Protein Pathways: SNARE interactions in vesicular transport

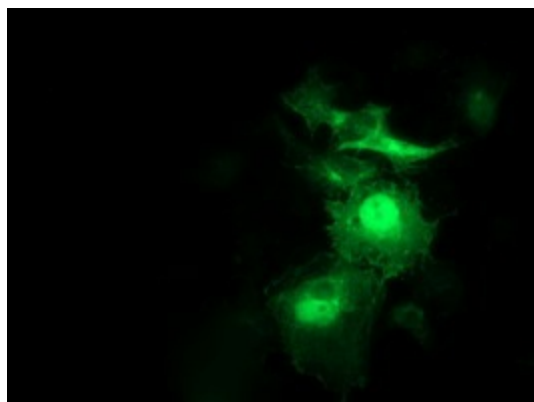
### Product images:



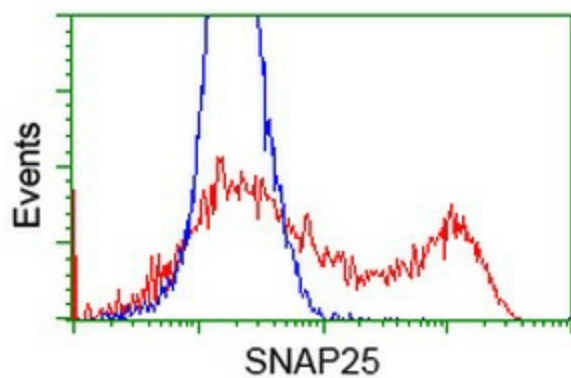
HEK293T cells were transfected with the pCMV6-ENTRY control (Left lane) or pCMV6-ENTRY SNAP25 ([RC202068], Right lane) cDNA for 48 hrs and lysed. Equivalent amounts of cell lysates (5 ug per lane) were separated by SDS-PAGE and immunoblotted with anti-SNAP25. Positive lysates [LY418912] (100ug) and [LC418912] (20ug) can be purchased separately from OriGene.



Immunohistochemical staining of paraffin-embedded Human pancreas tissue within the normal limits using anti-SNAP25 mouse monoclonal antibody. (Heat-induced epitope retrieval by 10mM citric buffer, pH6.0, 100°C for 10min, TA502838)



Anti-SNAP25 mouse monoclonal antibody (TA502838) immunofluorescent staining of COS7 cells transiently transfected by pCMV6-ENTRY SNAP25 ([RC202068]).



HEK293T cells transfected with either [RC202068] overexpress plasmid (Red) or empty vector control plasmid (Blue) were immunostained by anti-SNAP25 antibody (TA502838), and then analyzed by flow cytometry.