

Product datasheet for TA502799

FGFR2 Mouse Monoclonal Antibody [Clone ID: OTI3F8]

Product data:

Product Type:	Primary Antibodies
Clone Name:	OTI3F8
Applications:	IF, IHC, WB
Recommend Dilution:	WB 1:500~2000, IHC 1:150, IF 1:100, FLOW 1:100
Reactivity:	Human
Host:	Mouse
Isotype:	IgG2a
Clonality:	Monoclonal
Immunogen:	Full length human recombinant protein of human FGFR2(NP_000132) produced in HEK293T cell.
Formulation:	PBS (PH 7.3) containing 1% BSA, 50% glycerol and 0.02% sodium azide.
Concentration:	1 mg/ml
Purification:	Purified from mouse ascites fluids or tissue culture supernatant by affinity chromatography (protein A/G)
Gene Name:	fibroblast growth factor receptor 2
Database Link:	NP_000132 Entrez Gene 2263 Human



[View online »](#)

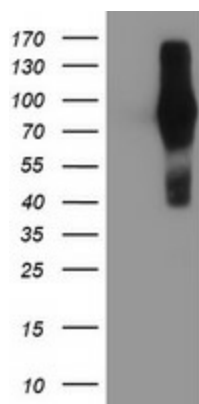
Background: The protein encoded by this gene is a member of the fibroblast growth factor receptor family, where amino acid sequence is highly conserved between members and throughout evolution. FGFR family members differ from one another in their ligand affinities and tissue distribution. A full-length representative protein consists of an extracellular region, composed of three immunoglobulin-like domains, a single hydrophobic membrane-spanning segment and a cytoplasmic tyrosine kinase domain. The extracellular portion of the protein interacts with fibroblast growth factors, setting in motion a cascade of downstream signals, ultimately influencing mitogenesis and differentiation. This particular family member is a high-affinity receptor for acidic, basic and/or keratinocyte growth factor, depending on the isoform. Mutations in this gene are associated with Crouzon syndrome, Pfeiffer syndrome, Craniosynostosis, Apert syndrome, Jackson-Weiss syndrome, Beare-Stevenson cutis gyrata syndrome, Saethre-Chotzen syndrome, and syndromic craniosynostosis. Multiple alternatively spliced transcript variants encoding different isoforms have been noted for this gene. [provided by RefSeq]

Synonyms: BBDS; BEK; BFR-1; CD332; CEK3; CFD1; ECT1; JWS; K-SAM; KGFR; TK14; TK25

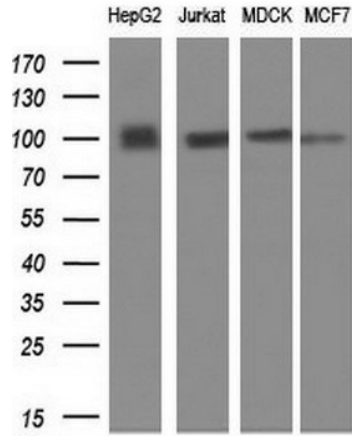
Protein Families: Druggable Genome, Protein Kinase, Secreted Protein, Transmembrane

Protein Pathways: Endocytosis, MAPK signaling pathway, Pathways in cancer, Prostate cancer, Regulation of actin cytoskeleton

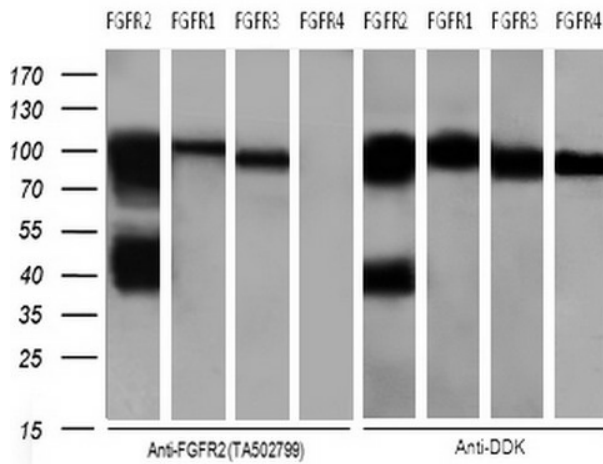
Product images:



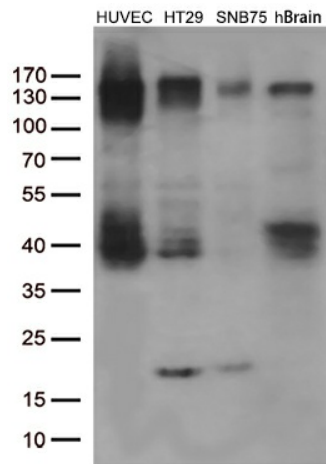
HEK293T cells were transfected with the pCMV6-ENTRY control (Left lane) or pCMV6-ENTRY FGFR2 ([RC217098], Right lane) cDNA for 48 hrs and lysed. Equivalent amounts of cell lysates (5 ug per lane) were separated by SDS-PAGE and immunoblotted with anti-FGFR2. Positive lysates [LY400050] (100ug) and [LC400050] (20ug) can be purchased separately from OriGene.



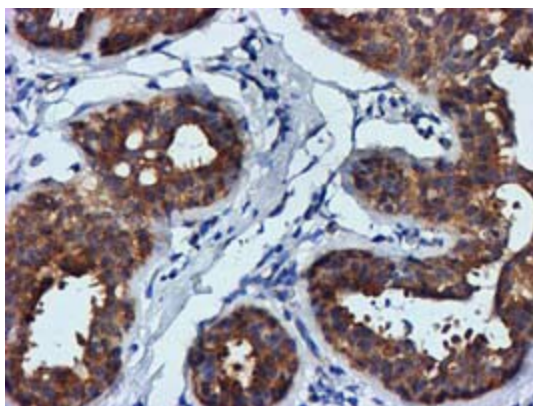
Western blot analysis of extracts (10ug) from 4 different cell lines by using anti-FGFR2 monoclonal antibody at 1:200 dilution.



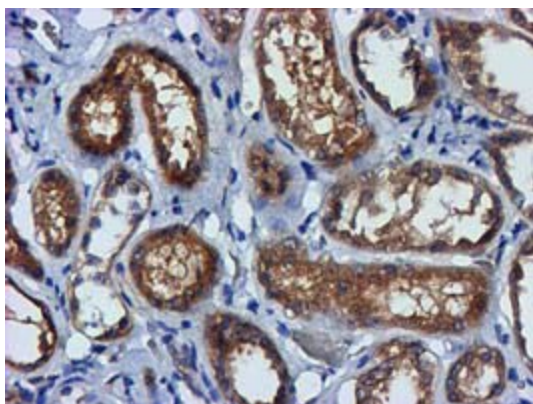
Cross-Reactivity of anti-FGFR2 (TA502799) with FGFR1 and FGFR3, not with FGFR4. HEK293T cells were transfected with the DDK (FLAG)-tagged DNAs of FGFR2 ([RC217098]), FGFR1 ([RC202080]), FGFR3 ([RC215533]), FGFR4 ([RC204230]) cDNA for 48 hrs and lysed. Equivalent amounts of cell lysates (5 ug per lane) were separated by SDS-PAGE and immunoblotted with anti-FGFR2 (TA502799). (1:500) and anti-DDK (1:2000), respectively.



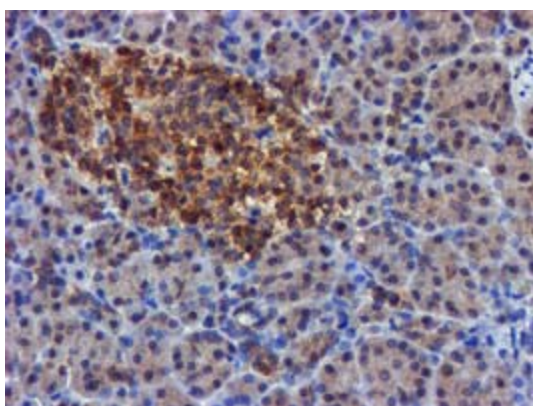
Western blot analysis of extracts (35ug) from 3 different cell lines and human brain tissue by using anti-FGFR2 monoclonal antibody (1:250).



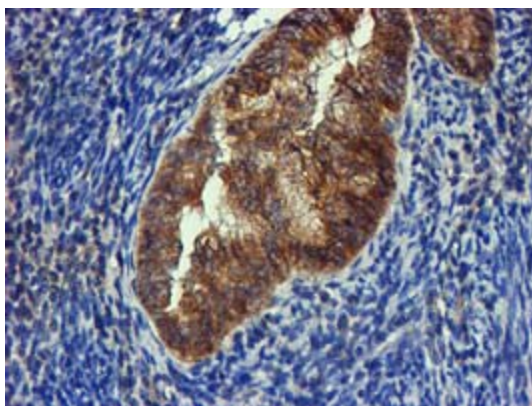
Immunohistochemical staining of paraffin-embedded Human breast tissue within the normal limits using anti-FGFR2 mouse monoclonal antibody. (Heat-induced epitope retrieval by 10mM citric buffer, pH6.0, 100°C for 10min, TA502799)



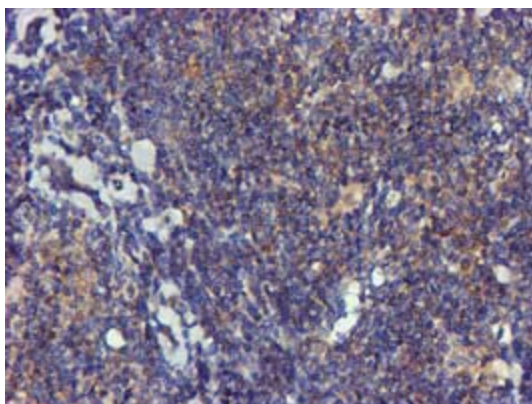
Immunohistochemical staining of paraffin-embedded Human Kidney tissue within the normal limits using anti-FGFR2 mouse monoclonal antibody. (Heat-induced epitope retrieval by 10mM citric buffer, pH6.0, 100°C for 10min, TA502799)



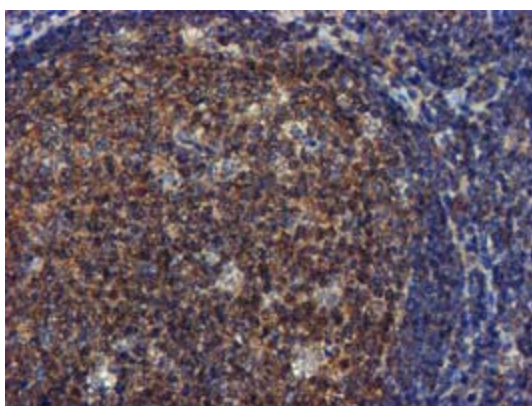
Immunohistochemical staining of paraffin-embedded Human pancreas tissue within the normal limits using anti-FGFR2 mouse monoclonal antibody. (Heat-induced epitope retrieval by 10mM citric buffer, pH6.0, 100°C for 10min, TA502799)



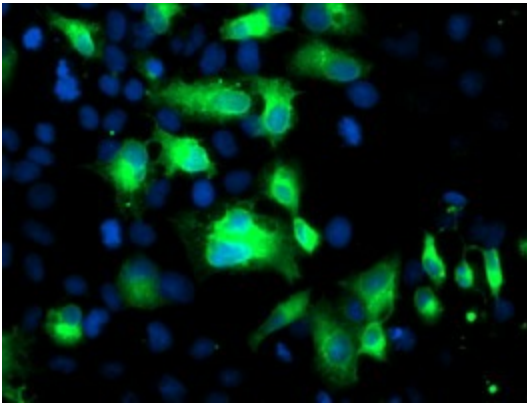
Immunohistochemical staining of paraffin-embedded Adenocarcinoma of Human endometrium tissue using anti-FGFR2 mouse monoclonal antibody. (Heat-induced epitope retrieval by 10mM citric buffer, pH6.0, 100°C for 10min, TA502799)



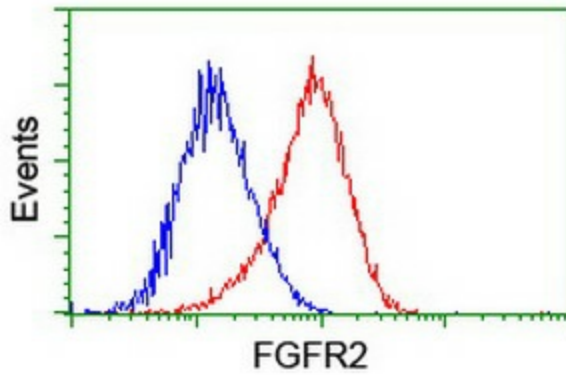
Immunohistochemical staining of paraffin-embedded Human lymphoma tissue using anti-FGFR2 mouse monoclonal antibody. (Heat-induced epitope retrieval by 10mM citric buffer, pH6.0, 100°C for 10min, TA502799)



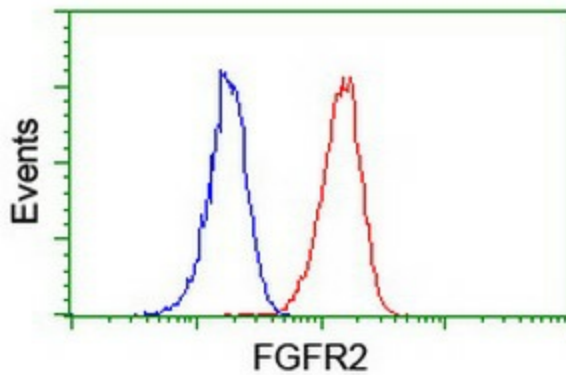
Immunohistochemical staining of paraffin-embedded Human tonsil within the normal limits using anti-FGFR2 mouse monoclonal antibody. (Heat-induced epitope retrieval by 10mM citric buffer, pH6.0, 100°C for 10min, TA502799)



Anti-FGFR2 mouse monoclonal antibody (TA502799) immunofluorescent staining of COS7 cells transiently transfected by pCMV6-ENTRY FGFR2 ([RC217098]).



Flow cytometric Analysis of HeLa cells, using anti-FGFR2 antibody (TA502799), (Red), compared to a nonspecific negative control antibody, (Blue).



Flow cytometric Analysis of Jurkat cells, using anti-FGFR2 antibody (TA502799), (Red), compared to a nonspecific negative control antibody, (Blue).