

Product datasheet for TA502701

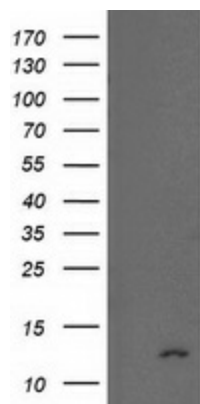
NDUFA7 Mouse Monoclonal Antibody [Clone ID: OT12E4]

Product data:

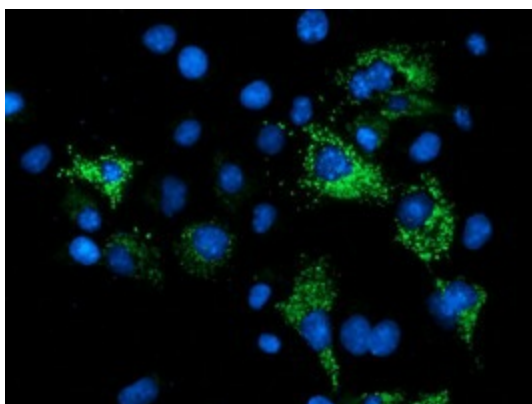
Product Type:	Primary Antibodies
Clone Name:	OT12E4
Applications:	FC, IF, WB
Recommend Dilution:	WB 1:2000, IF 1:100, FLOW 1:100
Reactivity:	Human
Host:	Mouse
Isotype:	IgG1
Clonality:	Monoclonal
Immunogen:	Full length human recombinant protein of human NDUFA7 (NP_004992) produced in HEK293T cell.
Formulation:	PBS (PH 7.3) containing 1% BSA, 50% glycerol and 0.02% sodium azide.
Concentration:	0.53 mg/ml
Purification:	Purified from mouse ascites fluids or tissue culture supernatant by affinity chromatography (protein A/G)
Predicted Protein Size:	12.4 kDa
Gene Name:	NADH:ubiquinone oxidoreductase subunit A7
Database Link:	NP_004992 Entrez Gene 4701 Human
Synonyms:	B14.5a; CI-B14.5a
Protein Pathways:	Alzheimer's disease, Huntington's disease, Metabolic pathways, Oxidative phosphorylation, Parkinson's disease



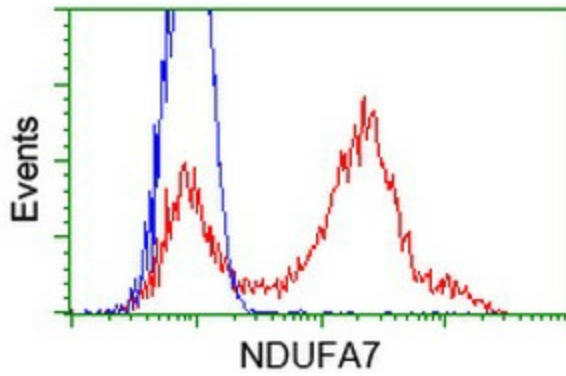
[View online »](#)

Product images:

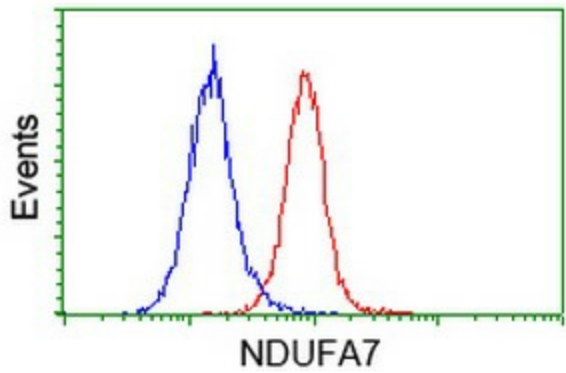
HEK293T cells were transfected with the pCMV6-ENTRY control (Left lane) or pCMV6-ENTRY NDUFA7 ([RC200534], Right lane) cDNA for 48 hrs and lysed. Equivalent amounts of cell lysates (5 ug per lane) were separated by SDS-PAGE and immunoblotted with anti-NDUFA7. Positive lysates [LY417603] (100ug) and [LC417603] (20ug) can be purchased separately from OriGene.



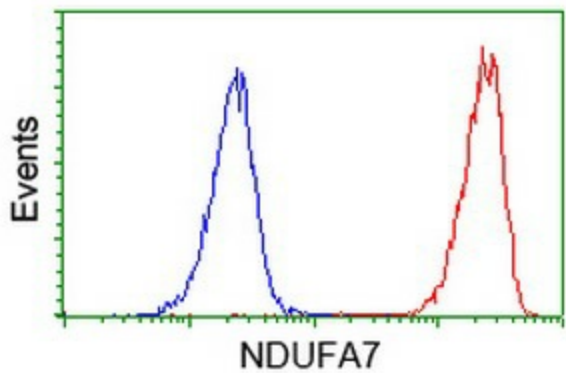
Anti-NDUFA7 mouse monoclonal antibody (TA502701) immunofluorescent staining of COS7 cells transiently transfected by pCMV6-ENTRY NDUFA7 ([RC200534]).



HEK293T cells transfected with either [RC200534] overexpress plasmid (Red) or empty vector control plasmid (Blue) were immunostained by anti-NDUFA7 antibody (TA502701), and then analyzed by flow cytometry.



Flow cytometric Analysis of HeLa cells, using anti-NDUFA7 antibody (TA502701), (Red), compared to a nonspecific negative control antibody ([TA50011]), (Blue).



Flow cytometric Analysis of Jurkat cells, using anti-NDUFA7 antibody (TA502701), (Red), compared to a nonspecific negative control antibody ([TA50011]), (Blue).