

## Product datasheet for **TA502504**

### UBA2 Mouse Monoclonal Antibody [Clone ID: OTI4A3]

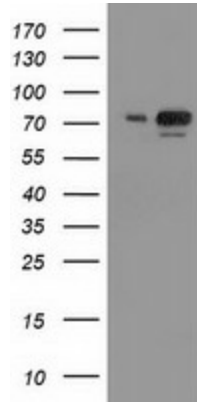
#### Product data:

|                         |  |
|-------------------------|--|
| Product Type:           | Primary Antibodies   |
| Clone Name:             | OTI4A3   |
| Applications:           | IF, IHC, WB  |
| Recommend Dilution:     | WB 1:500~2000, IHC 1:150, IF 1:100   |
| Reactivity:             | Human, Monkey, Rat, Dog  |
| Host:                   | Mouse  |
| Isotype:                | IgG2a  |
| Clonality:              | Monoclonal   |
| Immunogen:              | Full length human recombinant protein of human UBA2 (NP_005490) produced in HEK293T cell.  |
| Formulation:            | PBS (PH 7.3) containing 1% BSA, 50% glycerol and 0.02% sodium azide.   |
| Concentration:          | 1 mg/ml  |
| Purification:           | Purified from mouse ascites fluids or tissue culture supernatant by affinity chromatography (protein A/G)  |
| Predicted Protein Size: | 71 kDa   |
| Gene Name:              | ubiquitin like modifier activating enzyme 2  |
| Database Link:          | <a href="#">NP_005490 Entrez Gene</a> <a href="#">308508 RatEntrez Gene</a> <a href="#">476490 DogEntrez Gene</a> <a href="#">705808 MonkeyEntrez Gene</a> <a href="#">10054 Human</a>   |
| Background:             | Posttranslational modification of proteins by the addition of the small protein SUMO (see SUMO1; MIM 601912), or sumoylation, regulates protein structure and intracellular localization. SAE1 (MIM 613294) and UBA2 form a heterodimer that functions as a SUMO-activating enzyme for the sumoylation of proteins (Okuma et al., 1999 [PubMed 9920803]). [supplied by OMIM] |
| Synonyms:               | ARX; HRIHFB2115; SAE2  |
| Protein Pathways:       | Ubiquitin mediated proteolysis   |

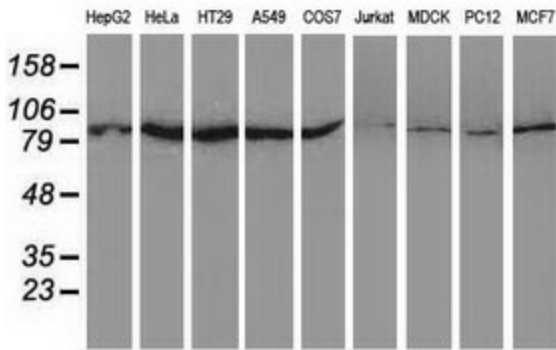


[View online »](#)

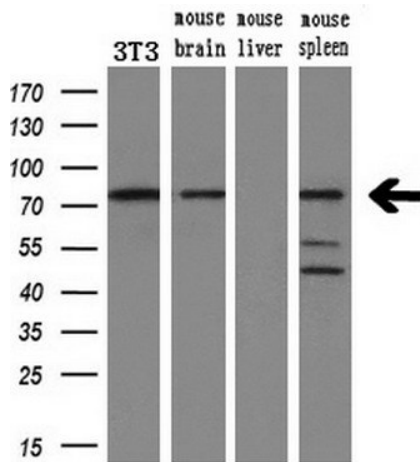
Product images:



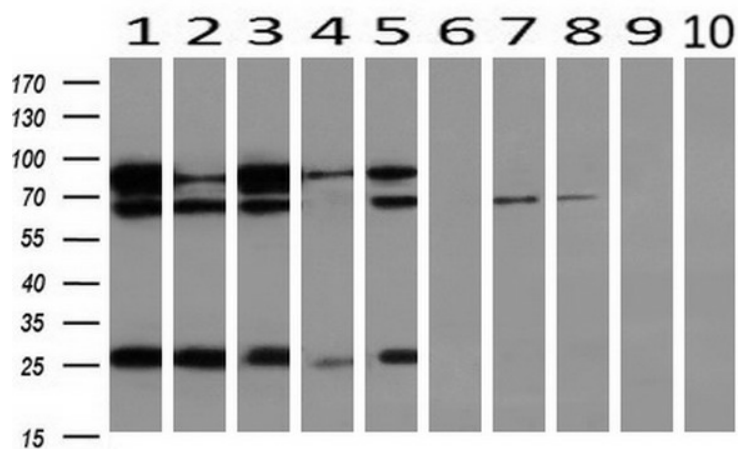
HEK293T cells were transfected with the pCMV6-ENTRY control (Left lane) or pCMV6-ENTRY UBA2 ([RC201288], Right lane) cDNA for 48 hrs and lysed. Equivalent amounts of cell lysates (5 ug per lane) were separated by SDS-PAGE and immunoblotted with anti-UBA2. Positive lysates [LY417267] (100ug) and [LC417267] (20ug) can be purchased separately from OriGene.



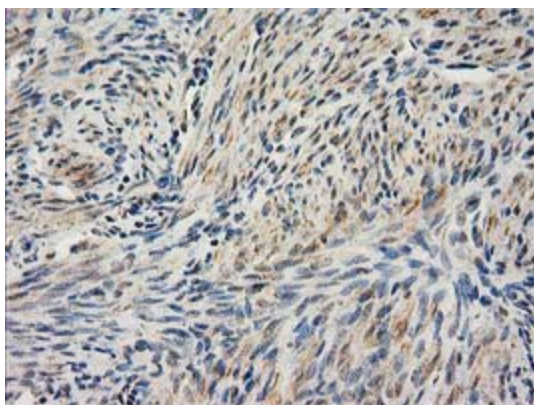
Western blot analysis of extracts (35ug) from 9 different cell lines by using anti-UBA2 monoclonal antibody.



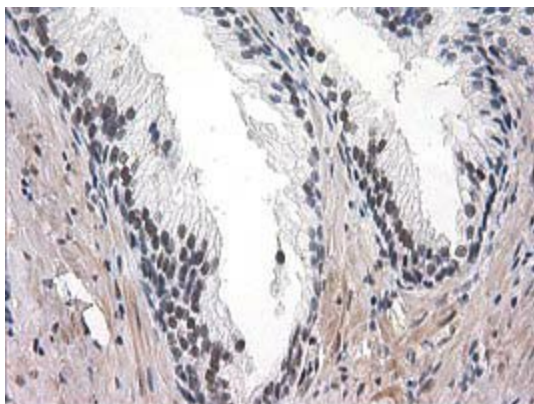
Western blot analysis of extracts (10ug) from a mouse cell line and 3 different mouse tissues by using anti-UBA2 monoclonal antibody (1:200).



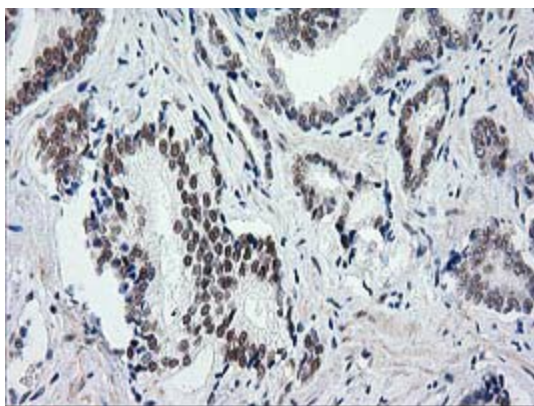
Western blot analysis of extracts (10ug) from 10 Human tissue by using anti-UBA2 monoclonal antibody at 1:200 (1: Testis; 2: Omentum; 3: Uterus; 4: Breast; 5: Brain; 6: Liver; 7: Ovary; 8: Thyroid gland; 9: colon; 10: spleen).



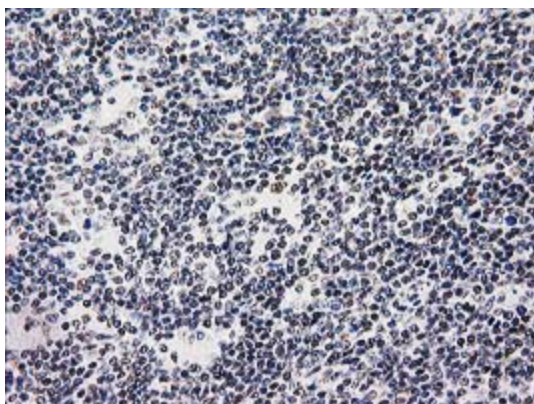
Immunohistochemical staining of paraffin-embedded Human endometrium tissue within the normal limits using anti-UBA2 mouse monoclonal antibody. (Heat-induced epitope retrieval by 10mM citric buffer, pH6.0, 100°C for 10min, TA502504)



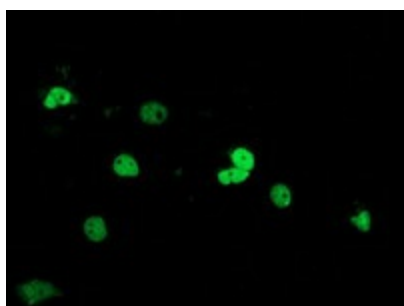
Immunohistochemical staining of paraffin-embedded Human prostate tissue within the normal limits using anti-UBA2 mouse monoclonal antibody. (Heat-induced epitope retrieval by 10mM citric buffer, pH6.0, 100°C for 10min, TA502504)



Immunohistochemical staining of paraffin-embedded Carcinoma of Human prostate tissue using anti-UBA2 mouse monoclonal antibody. (Heat-induced epitope retrieval by 10mM citric buffer, pH6.0, 100°C for 10min, TA502504)



Immunohistochemical staining of paraffin-embedded Human lymphoma tissue using anti-UBA2 mouse monoclonal antibody. (Heat-induced epitope retrieval by 10mM citric buffer, pH6.0, 100°C for 10min, TA502504)



Anti-UBA2 mouse monoclonal antibody (TA502504) immunofluorescent staining of COS7 cells transiently transfected by pCMV6-ENTRY UBA2 ([RC201288]).