

Product datasheet for TA502490

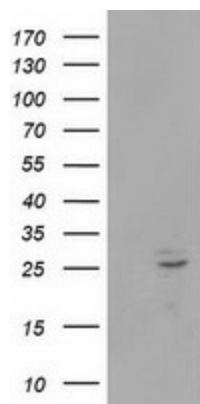
POLR2E Mouse Monoclonal Antibody [Clone ID: OTI2A11]

Product data:

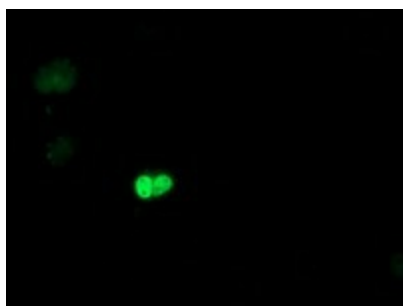
Product Type:	Primary Antibodies
Clone Name:	OTI2A11
Applications:	IF, WB
Recommend Dilution:	WB 1:2000, IF 1:100
Reactivity:	Human
Host:	Mouse
Isotype:	IgG1
Clonality:	Monoclonal
Immunogen:	Full length human recombinant protein of human POLR2E (NP_002686) produced in HEK293T cell.
Formulation:	PBS (PH 7.3) containing 1% BSA, 50% glycerol and 0.02% sodium azide.
Concentration:	1 mg/ml
Purification:	Purified from mouse ascites fluids or tissue culture supernatant by affinity chromatography (protein A/G)
Predicted Protein Size:	24.4 kDa
Gene Name:	RNA polymerase II subunit E
Database Link:	NP_002686 Entrez Gene 5434 Human
Background:	This gene encodes the fifth largest subunit of RNA polymerase II, the polymerase responsible for synthesizing messenger RNA in eukaryotes. This subunit is shared by the other two DNA-directed RNA polymerases and is present in two-fold molar excess over the other polymerase subunits. An interaction between this subunit and a hepatitis virus transactivating protein has been demonstrated, suggesting that interaction between transcriptional activators and the polymerase can occur through this subunit. A pseudogene is located on chromosome 11. [provided by RefSeq]
Synonyms:	hRPB25; hsRPB5; RPABC1; RPB5; XAP4
Protein Families:	Transcription Factors
Protein Pathways:	Huntington's disease, Metabolic pathways, Purine metabolism, Pyrimidine metabolism, RNA polymerase



[View online »](#)

Product images:

HEK293T cells were transfected with the pCMV6-ENTRY control (Left lane) or pCMV6-ENTRY POLR2E ([RC201266], Right lane) cDNA for 48 hrs and lysed. Equivalent amounts of cell lysates (5 ug per lane) were separated by SDS-PAGE and immunoblotted with anti-POLR2E. Positive lysates [LY419161] (100ug) and [LC419161] (20ug) can be purchased separately from OriGene.



Anti-POLR2E mouse monoclonal antibody (TA502490) immunofluorescent staining of COS7 cells transiently transfected by pCMV6-ENTRY POLR2E ([RC201266]).