

Product datasheet for **TA502470**

NNMT Mouse Monoclonal Antibody [Clone ID: OTI1A1]

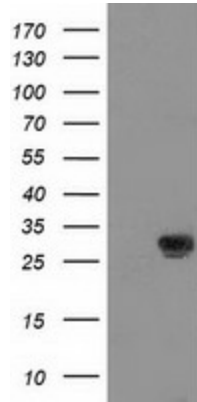
Product data:

| | |
|-------------------------|---|
| Product Type: | Primary Antibodies |
| Clone Name: | OTI1A1 |
| Applications: | FC, IF, IHC, WB |
| Recommend Dilution: | WB 1:500~2000, IHC 1:150, IF 1:100, FLOW 1:100 |
| Reactivity: | Human, Dog |
| Host: | Mouse |
| Isotype: | IgG1 |
| Clonality: | Monoclonal |
| Immunogen: | Full length human recombinant protein of human NNMT (NP_006160) produced in HEK293T cell. |
| Formulation: | PBS (PH 7.3) containing 1% BSA, 50% glycerol and 0.02% sodium azide. |
| Concentration: | 1 mg/ml |
| Purification: | Purified from mouse ascites fluids or tissue culture supernatant by affinity chromatography (protein A/G) |
| Predicted Protein Size: | 29.4 kDa |
| Gene Name: | nicotinamide N-methyltransferase |
| Database Link: | NP_006160 Entrez Gene 489396 DogEntrez Gene 4837 Human |
| Background: | N-methylation is one method by which drug and other xenobiotic compounds are metabolized by the liver. This gene encodes the protein responsible for this enzymatic activity which uses S-adenosyl methionine as the methyl donor. [provided by RefSeq] |
| Synonyms: | nicotinamide N-methyltransferase |
| Protein Pathways: | Metabolic pathways, Nicotinate and nicotinamide metabolism |

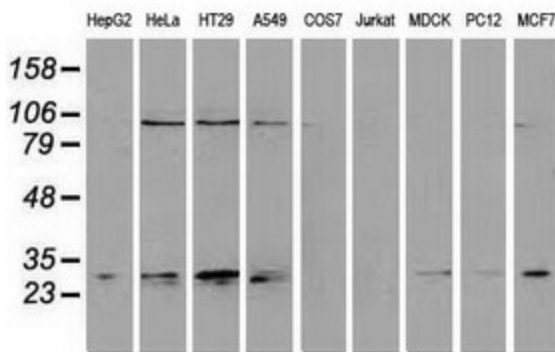


[View online »](#)

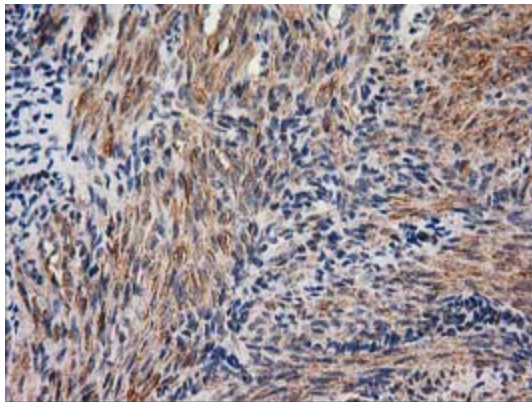
Product images:



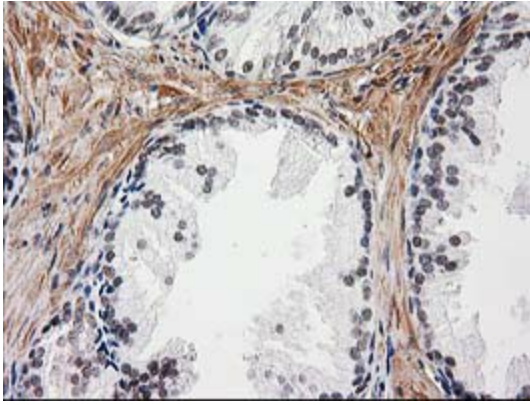
HEK293T cells were transfected with the pCMV6-ENTRY control (Left lane) or pCMV6-ENTRY NNMT ([RC200641], Right lane) cDNA for 48 hrs and lysed. Equivalent amounts of cell lysates (5 ug per lane) were separated by SDS-PAGE and immunoblotted with anti-NNMT. Positive lysates [LY401860] (100ug) and [LC401860] (20ug) can be purchased separately from OriGene.



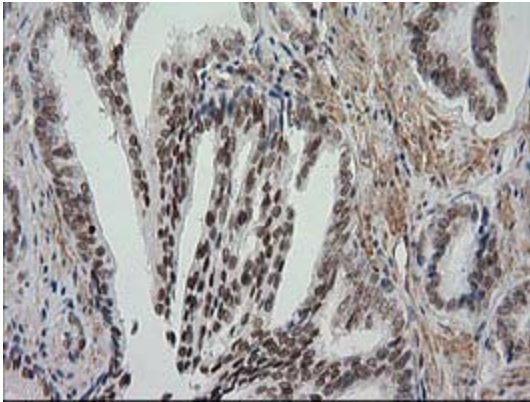
Western blot analysis of extracts (35ug) from 9 different cell lines by using anti-NNMT monoclonal antibody.



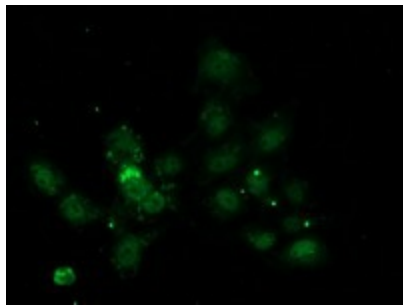
Immunohistochemical staining of paraffin-embedded Human endometrium tissue within the normal limits using anti-NNMT mouse monoclonal antibody. (Heat-induced epitope retrieval by 10mM citric buffer, pH6.0, 100°C for 10min, TA502470)



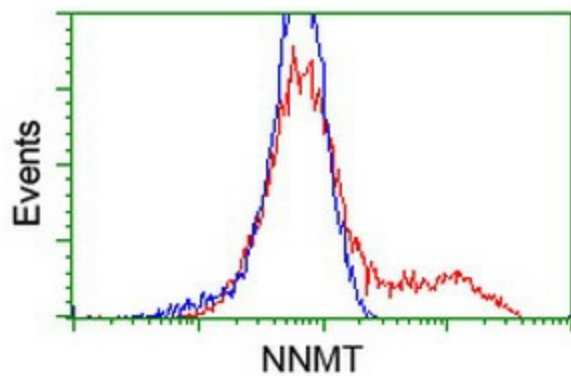
Immunohistochemical staining of paraffin-embedded Human prostate tissue within the normal limits using anti-NNMT mouse monoclonal antibody. (Heat-induced epitope retrieval by 10mM citric buffer, pH6.0, 100°C for 10min, TA502470)



Immunohistochemical staining of paraffin-embedded Carcinoma of Human prostate tissue using anti-NNMT mouse monoclonal antibody. (Heat-induced epitope retrieval by 10mM citric buffer, pH6.0, 100°C for 10min, TA502470)



Anti-NNMT mouse monoclonal antibody (TA502470) immunofluorescent staining of COS7 cells transiently transfected by pCMV6-ENTRY NNMT ([RC200641]).



HEK293T cells transfected with either [RC200641] overexpress plasmid (Red) or empty vector control plasmid (Blue) were immunostained by anti-NNMT antibody (TA502470), and then analyzed by flow cytometry.