

## Product datasheet for **TA502194**

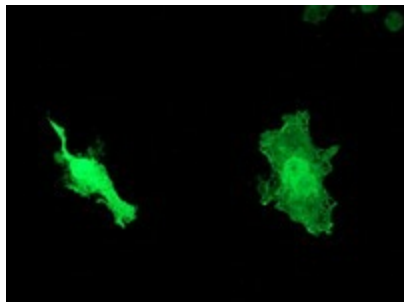
### **Hsp40 (DNAJB1) Mouse Monoclonal Antibody [Clone ID: OTI1E9]**

#### **Product data:**

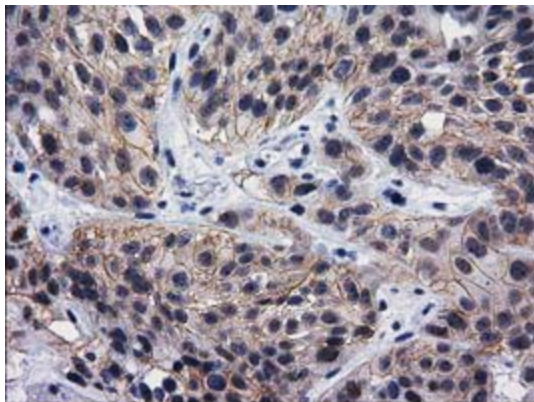
<b>Product Type:</b>	Primary Antibodies
<b>Clone Name:</b>	OTI1E9
<b>Applications:</b>	FC, IF, IHC, WB
<b>Recommend Dilution:</b>	WB 1:1000~2000, IHC 1:150, IF 1:100, FLOW 1:100
<b>Reactivity:</b>	Human
<b>Host:</b>	Mouse
<b>Isotype:</b>	IgG2a
<b>Clonality:</b>	Monoclonal
<b>Immunogen:</b>	Full length human recombinant protein of human DNAJB1 (NP_006136) produced in HEK293T cell.
<b>Formulation:</b>	PBS (PH 7.3) containing 1% BSA, 50% glycerol and 0.02% sodium azide.
<b>Concentration:</b>	0.92 mg/ml
<b>Purification:</b>	Purified from mouse ascites fluids or tissue culture supernatant by affinity chromatography (protein A/G)
<b>Predicted Protein Size:</b>	37.9 kDa
<b>Gene Name:</b>	Dnaj heat shock protein family (Hsp40) member B1
<b>Database Link:</b>	<a href="#">NP_006136 Entrez Gene 3337 Human</a>
<b>Synonyms:</b>	Hdj1; Hsp40; HSPF1; RSPH16B; Sis1



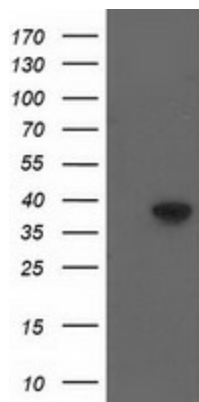
[View online »](#)

**Product images:**

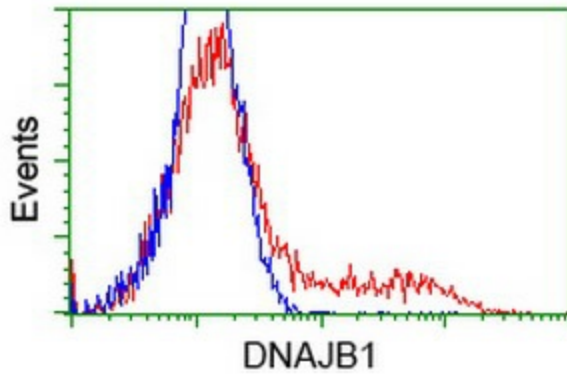
Western blot analysis of extracts (10ug) from HeLa cell line by using anti-DNAJB1 monoclonal antibody (1:200).



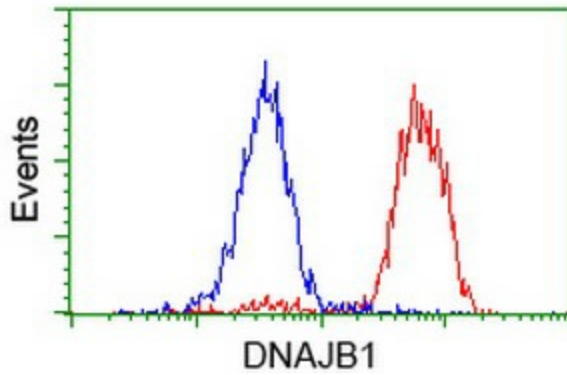
Immunohistochemical staining of paraffin-embedded Carcinoma of Human bladder tissue using anti-DNAJB1 mouse monoclonal antibody. (Heat-induced epitope retrieval by 10mM citric buffer, pH6.0, 100°C for 10min, TA502194)



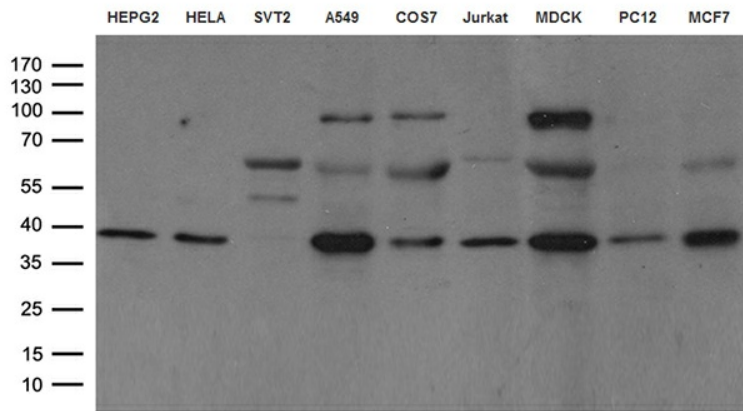
HEK293T cells were transfected with the pCMV6-ENTRY control (Left lane) or pCMV6-ENTRY DNAJB1 ([RC201762], Right lane) cDNA for 48 hrs and lysed. Equivalent amounts of cell lysates (5 ug per lane) were separated by SDS-PAGE and immunoblotted with anti-DNAJB1. Positive lysates [LY401851] (100ug) and [LC401851] (20ug) can be purchased separately from OriGene.



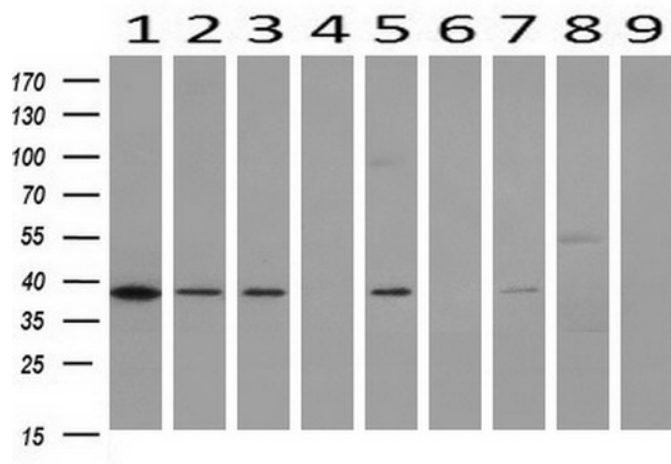
HEK293T cells transfected with either [RC201762] overexpress plasmid (Red) or empty vector control plasmid (Blue) were immunostained by anti-DNAJB1 antibody (TA502194), and then analyzed by flow cytometry.



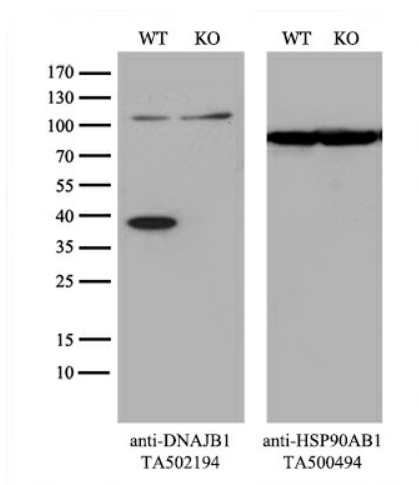
Flow cytometric Analysis of HeLa cells, using anti-DNAJB1 antibody (TA502194), (Red), compared to a nonspecific negative control antibody ([TA50011]), (Blue).



Western blot analysis of extracts (35ug) from 9 different cell lines by using anti-DNAJB1 monoclonal antibody (HepG2: human; HeLa: human; SVT2: mouse; A549: human; COS7: monkey; Jurkat: human; MDCK: canine; PC12: rat; MCF7: human) (1:100).



Western blot analysis of extracts (10ug) from 9 Human tissue by using anti-DNAJB1 monoclonal antibody at 1:200 (1: Testis; 2: Omentum; 3: Uterus; 4: Breast; 5: Brain; 6: Liver; 7: Ovary; 8: Thyroid gland; 9: colon).



Equivalent amounts of cell lysates (10 ug per lane) of wild-type 293T cells (WT, Cat# LC810293T) and DNAJB1-Knockout 293T cells (KO, Cat# [LC811758]) were separated by SDS-PAGE and immunoblotted with anti-DNAJB1 monoclonal antibody TA502194, (1:250). Then the blotted membrane was stripped and reprobed with anti-HSP90AB1 antibody ([TA500494]) as a loading control.