

Product datasheet for TA502097

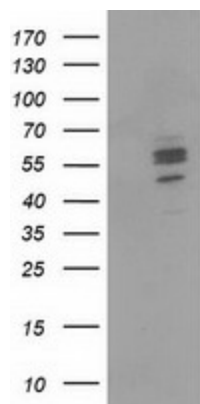
CNDP1 Mouse Monoclonal Antibody [Clone ID: OTI1A5]

Product data:

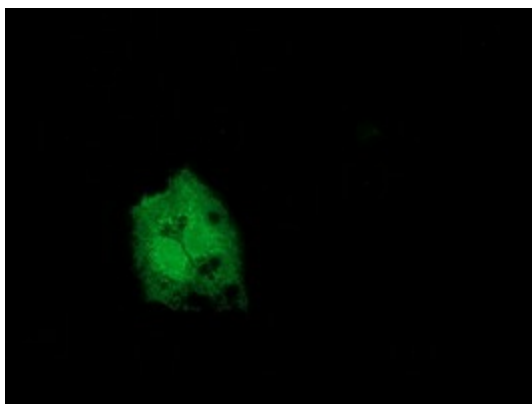
Product Type:	Primary Antibodies
Clone Name:	OTI1A5
Applications:	IF, WB
Recommend Dilution:	WB 1:2000, IF 1:100
Reactivity:	Human
Host:	Mouse
Isotype:	IgG1
Clonality:	Monoclonal
Immunogen:	Full length human recombinant protein of human CNDP1 (NP_116038) produced in HEK293T cell.
Formulation:	PBS (PH 7.3) containing 1% BSA, 50% glycerol and 0.02% sodium azide.
Concentration:	1 mg/ml
Purification:	Purified from mouse ascites fluids or tissue culture supernatant by affinity chromatography (protein A/G)
Predicted Protein Size:	56.5 kDa
Gene Name:	carnosine dipeptidase 1
Database Link:	NP_116038 Entrez Gene 84735 Human
Background:	This gene encodes a member of the M20 metalloprotease family. The encoded protein is specifically expressed in the brain, is a homodimeric dipeptidase which was identified as human carnosinase. This gene contains trinucleotide (CTG) repeat length polymorphism in the coding region. [provided by RefSeq]
Synonyms:	CN1; CPGL2; HsT2308
Protein Families:	Protease, Secreted Protein
Protein Pathways:	beta-Alanine metabolism, Histidine metabolism, Metabolic pathways



[View online »](#)

Product images:

HEK293T cells were transfected with the pCMV6-ENTRY control (Left lane) or pCMV6-ENTRY CNDP1 ([RC210312], Right lane) cDNA for 48 hrs and lysed. Equivalent amounts of cell lysates (5 ug per lane) were separated by SDS-PAGE and immunoblotted with anti-CNDP1. Positive lysates [LY403189] (100ug) and [LC403189] (20ug) can be purchased separately from OriGene.



Anti-CNDP1 mouse monoclonal antibody (TA502097) immunofluorescent staining of COS7 cells transiently transfected by pCMV6-ENTRY CNDP1 ([RC210312]).