

Product datasheet for TA501887

SOD2 Mouse Monoclonal Antibody [Clone ID: OT11H6]

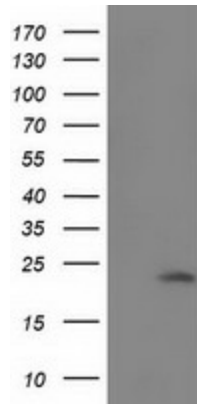
Product data:

| | |
|-------------------------|---|
| Product Type: | Primary Antibodies |
| Clone Name: | OT11H6 |
| Applications: | WB |
| Recommend Dilution: | WB 1:500~2000 |
| Reactivity: | Human, Dog |
| Host: | Mouse |
| Isotype: | IgG1 |
| Clonality: | Monoclonal |
| Immunogen: | Full length human recombinant protein of human SOD2 (NP_000627) produced in HEK293T cell. |
| Formulation: | PBS (PH 7.3) containing 1% BSA, 50% glycerol and 0.02% sodium azide. |
| Concentration: | 0.65 mg/ml |
| Purification: | Purified from mouse ascites fluids or tissue culture supernatant by affinity chromatography (protein A/G) |
| Predicted Protein Size: | 22.2 kDa |
| Gene Name: | superoxide dismutase 2 |
| Database Link: | NP_000627 Entrez Gene 476258 DogEntrez Gene 6648 Human |
| Background: | This gene is a member of the iron/manganese superoxide dismutase family. It encodes a mitochondrial protein that forms a homotetramer and binds one manganese ion per subunit. This protein binds to the superoxide byproducts of oxidative phosphorylation and converts them to hydrogen peroxide and diatomic oxygen. Mutations in this gene have been associated with idiopathic cardiomyopathy (IDC), premature aging, sporadic motor neuron disease, and cancer. Alternate transcriptional splice variants, encoding different isoforms, have been characterized. [provided by RefSeq] |
| Synonyms: | IPOB; MNSOD; MVCD6 |
| Protein Families: | Druggable Genome, Transcription Factors |
| Protein Pathways: | Huntington's disease |

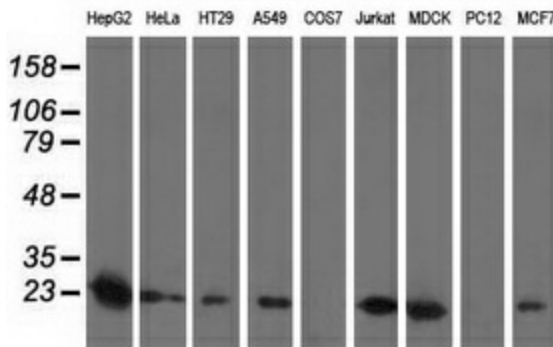


[View online »](#)

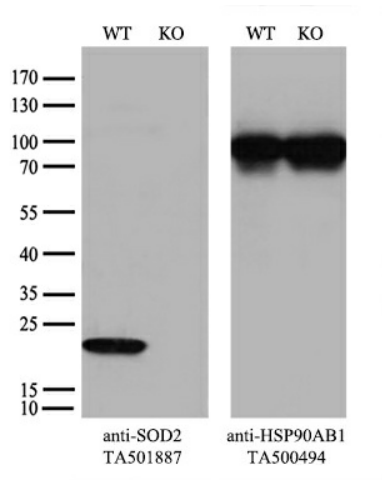
Product images:



HEK293T cells were transfected with the pCMV6-ENTRY control (Left lane) or pCMV6-ENTRY SOD2 ([RC202330], Right lane) cDNA for 48 hrs and lysed. Equivalent amounts of cell lysates (5 ug per lane) were separated by SDS-PAGE and immunoblotted with anti-SOD2. Positive lysates [LY400235] (100ug) and [LC400235] (20ug) can be purchased separately from OriGene.



Western blot analysis of extracts (35ug) from 9 different cell lines by using anti-SOD2 monoclonal antibody.



Equivalent amounts of cell lysates (10 ug per lane) of wild-type HEK293T cells (WT, Cat# LC810293T) and SOD2-Knockout HEK293T cells (KO, Cat# [LC840161]) were separated by SDS-PAGE and immunoblotted with anti-SOD2 monoclonal antibody TA501887 (1:500). Then the blotted membrane was stripped and reprobed with anti-HSP90 antibody as a loading control.