

Product datasheet for **TA501880**

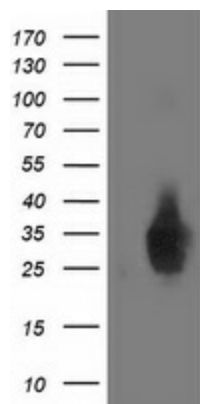
DUSP27 (DUPD1) Mouse Monoclonal Antibody [Clone ID: OTI6C6]

Product data:

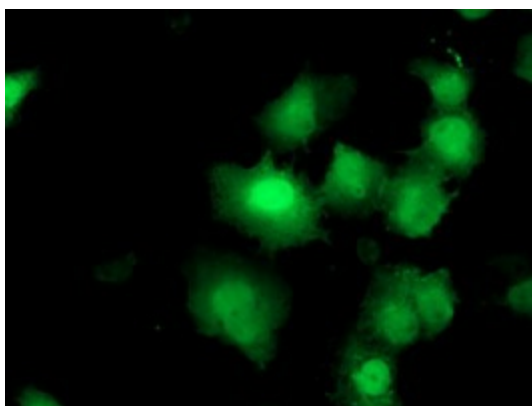
Product Type:	Primary Antibodies
Clone Name:	OTI6C6
Applications:	FC, IF, WB
Recommend Dilution:	WB 1:2000, IF 1:100, FLOW 1:100
Reactivity:	Human
Host:	Mouse
Isotype:	IgG2b
Clonality:	Monoclonal
Immunogen:	Full length human recombinant protein of human DUPD1(NP_001003892) produced in HEK293T cell.
Formulation:	PBS (PH 7.3) containing 1% BSA, 50% glycerol and 0.02% sodium azide.
Concentration:	1 mg/ml
Purification:	Purified from mouse ascites fluids or tissue culture supernatant by affinity chromatography (protein A/G)
Predicted Protein Size:	25.2 kDa
Gene Name:	dual specificity phosphatase and pro isomerase domain containing 1
Database Link:	NP_001003892 Entrez Gene 338599 Human
Synonyms:	DUSP27; FMDSP
Protein Families:	Phosphatase



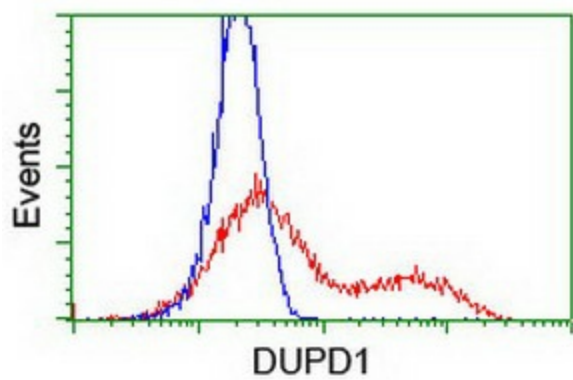
[View online »](#)

Product images:

HEK293T cells were transfected with the pCMV6-ENTRY control (Left lane) or pCMV6-ENTRY DUPD1 ([RC214361], Right lane) cDNA for 48 hrs and lysed. Equivalent amounts of cell lysates (5 ug per lane) were separated by SDS-PAGE and immunoblotted with anti-DUPD1. Positive lysates [LY424030] (100ug) and [LC424030] (20ug) can be purchased separately from OriGene.



Anti-DUPD1 mouse monoclonal antibody (TA501880) immunofluorescent staining of COS7 cells transiently transfected by pCMV6-ENTRY DUPD1 ([RC214361]).



HEK293T cells transfected with either [RC214361] overexpress plasmid (Red) or empty vector control plasmid (Blue) were immunostained by anti-DUPD1 antibody (TA501880), and then analyzed by flow cytometry.