

## Product datasheet for **TA501810**

### Adenylosuccinate Lyase (ADSL) Mouse Monoclonal Antibody [Clone ID: OTI2D10]

#### Product data:

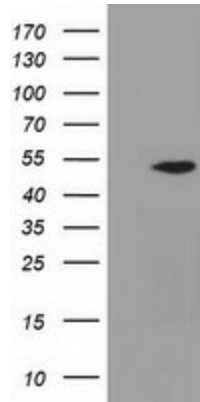
Product Type:	Primary Antibodies
Clone Name:	OTI2D10
Applications:	FC, IHC, WB
Recommend Dilution:	WB 1:500~2000, IHC 1:150, FLOW 1:100
Reactivity:	Human, Monkey, Rat, Dog
Host:	Mouse
Isotype:	IgG1
Clonality:	Monoclonal
Immunogen:	Full length human recombinant protein of human ADSL (NP_000017) produced in HEK293T cell.
Formulation:	PBS (PH 7.3) containing 1% BSA, 50% glycerol and 0.02% sodium azide.
Concentration:	0.55 mg/ml
Purification:	Purified from mouse ascites fluids or tissue culture supernatant by affinity chromatography (protein A/G)
Predicted Protein Size:	54.7 kDa
Gene Name:	adenylosuccinate lyase
Database Link:	<a href="#">NP_000017 Entrez Gene</a> <a href="#">315150 RatEntrez Gene</a> <a href="#">474499 DogEntrez Gene</a> <a href="#">709259 MonkeyEntrez Gene</a> <a href="#">158 Human</a>
Background:	Adenylosuccinate lyase is involved in both de novo synthesis of purines and formation of adenosine monophosphate from inosine monophosphate. It catalyzes two reactions in AMP biosynthesis: the removal of a fumarate from succinylaminoimidazole carboxamide (SAICA) ribotide to give aminoimidazole carboxamide ribotide (AICA) and removal of fumarate from adenylosuccinate to give AMP. Adenylosuccinase deficiency results in succinylpurinemic autism, psychomotor retardation, and , in some cases, growth retardation associated with muscle wasting and epilepsy. Two transcript variants encoding different isoforms have been found for this gene. [provided by RefSeq]
Synonyms:	AMPS; ASASE; ASL
Protein Families:	Druggable Genome



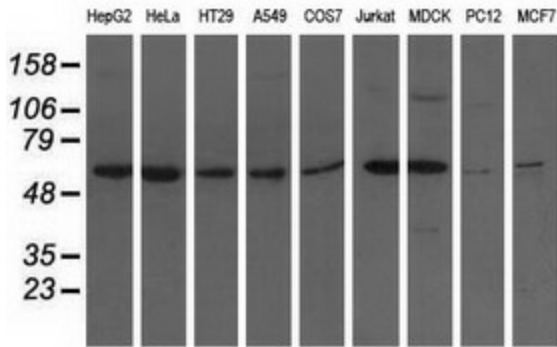
[View online »](#)

**Protein Pathways:** Alanine, aspartate and glutamate metabolism, Metabolic pathways, Purine metabolism

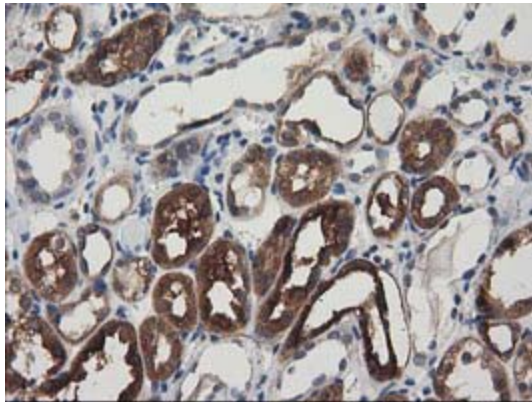
**Product images:**



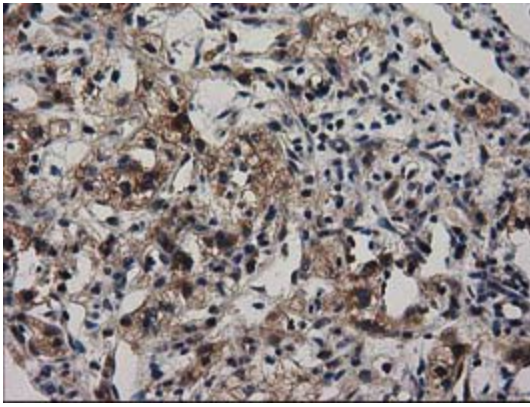
HEK293T cells were transfected with the pCMV6-ENTRY control (Left lane) or pCMV6-ENTRY ADSL ([RC200524], Right lane) cDNA for 48 hrs and lysed. Equivalent amounts of cell lysates (5 ug per lane) were separated by SDS-PAGE and immunoblotted with anti-ADSL. Positive lysates [LY424970] (100ug) and [LC424970] (20ug) can be purchased separately from OriGene.



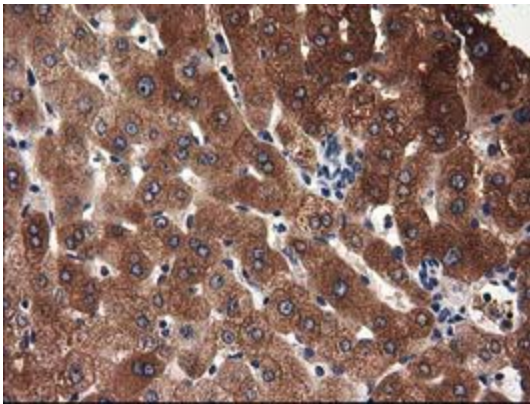
Western blot analysis of extracts (35ug) from 9 different cell lines by using anti-ADSL monoclonal antibody.



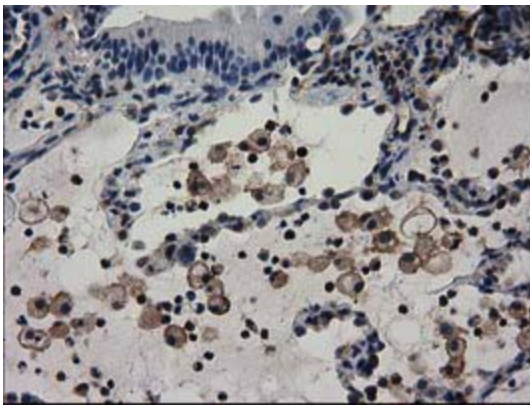
Immunohistochemical staining of paraffin-embedded Human Kidney tissue within the normal limits using anti-ADSL mouse monoclonal antibody. (Heat-induced epitope retrieval by 10mM citric buffer, pH6.0, 100°C for 10min, TA501810)



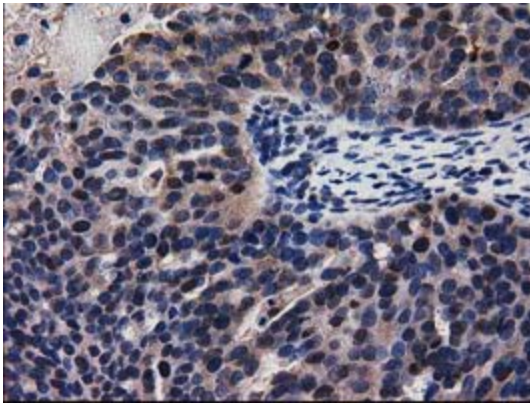
Immunohistochemical staining of paraffin-embedded Carcinoma of Human kidney tissue using anti-ADSL mouse monoclonal antibody. (Heat-induced epitope retrieval by 10mM citric buffer, pH6.0, 100°C for 10min, TA501810)



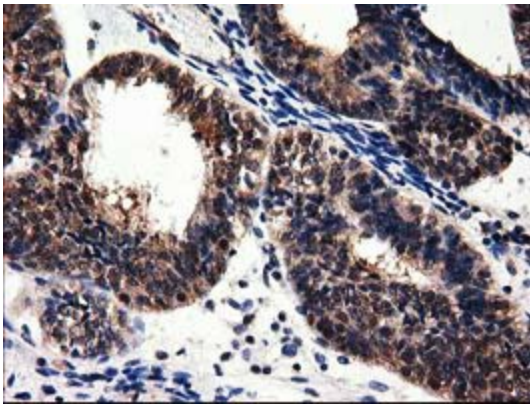
Immunohistochemical staining of paraffin-embedded Human liver tissue within the normal limits using anti-ADSL mouse monoclonal antibody. (Heat-induced epitope retrieval by 10mM citric buffer, pH6.0, 100°C for 10min, TA501810)



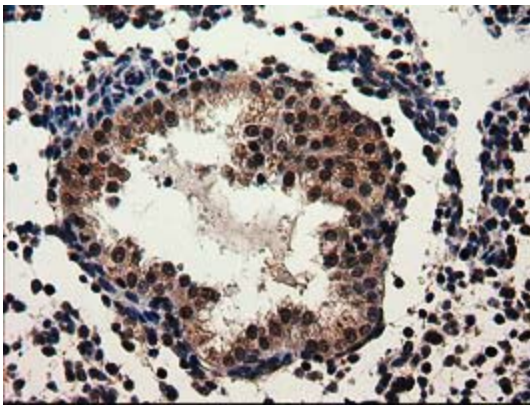
Immunohistochemical staining of paraffin-embedded Carcinoma of Human lung tissue using anti-ADSL mouse monoclonal antibody. (Heat-induced epitope retrieval by 10mM citric buffer, pH6.0, 100°C for 10min, TA501810)



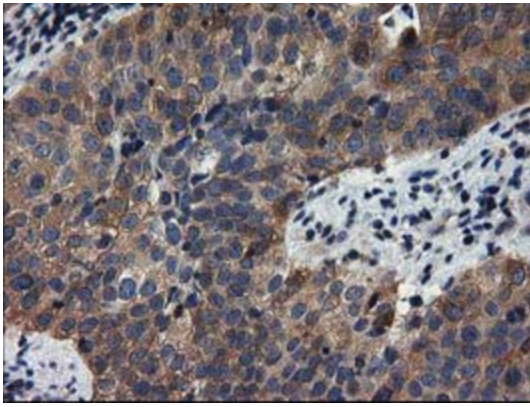
Immunohistochemical staining of paraffin-embedded Adenocarcinoma of Human ovary tissue using anti-ADSL mouse monoclonal antibody. (Heat-induced epitope retrieval by 10mM citric buffer, pH6.0, 100°C for 10min, TA501810)



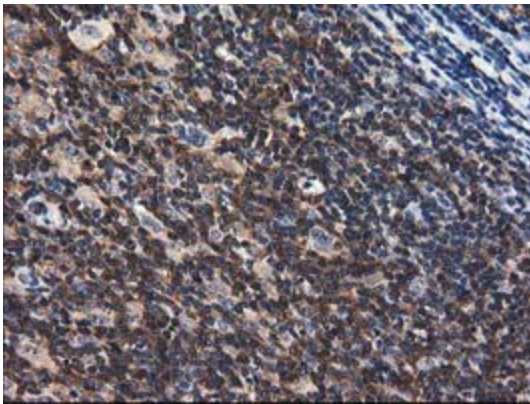
Immunohistochemical staining of paraffin-embedded Adenocarcinoma of Human endometrium tissue using anti-ADSL mouse monoclonal antibody. (Heat-induced epitope retrieval by 10mM citric buffer, pH6.0, 100°C for 10min, TA501810)



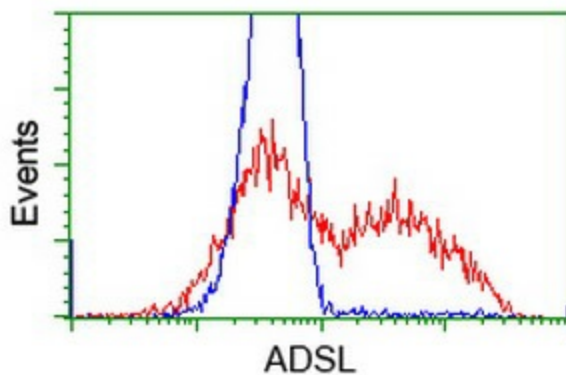
Immunohistochemical staining of paraffin-embedded Carcinoma of Human prostate tissue using anti-ADSL mouse monoclonal antibody. (Heat-induced epitope retrieval by 10mM citric buffer, pH6.0, 100°C for 10min, TA501810)



Immunohistochemical staining of paraffin-embedded Carcinoma of Human bladder tissue using anti-ADSL mouse monoclonal antibody. (Heat-induced epitope retrieval by 10mM citric buffer, pH6.0, 100°C for 10min, TA501810)



Immunohistochemical staining of paraffin-embedded Human lymphoma tissue using anti-ADSL mouse monoclonal antibody. (Heat-induced epitope retrieval by 10mM citric buffer, pH6.0, 100°C for 10min, TA501810)



HEK293T cells transfected with either [RC200524] overexpress plasmid (Red) or empty vector control plasmid (Blue) were immunostained by anti-ADSL antibody (TA501810), and then analyzed by flow cytometry.