

Product datasheet for TA501731

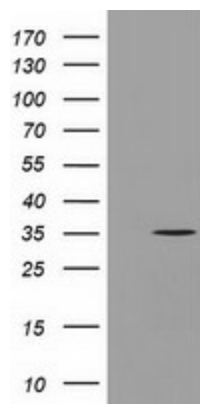
GGPS1 Mouse Monoclonal Antibody [Clone ID: OTI3F9]

Product data:

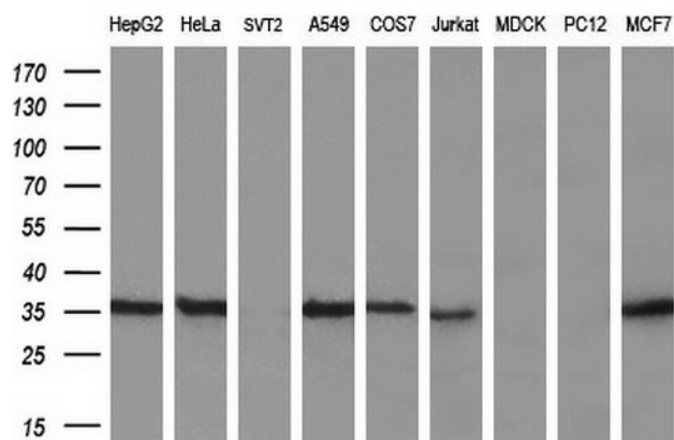
Product Type:	Primary Antibodies
Clone Name:	OTI3F9
Applications:	IHC, WB
Recommend Dilution:	WB 1:500, IHC 1:150
Reactivity:	Human
Host:	Mouse
Isotype:	IgG1
Clonality:	Monoclonal
Immunogen:	Full length human recombinant protein of human GGPS1 (NP_004828) produced in HEK293T cell.
Formulation:	PBS (PH 7.3) containing 1% BSA, 50% glycerol and 0.02% sodium azide.
Concentration:	0.81 mg/ml
Purification:	Purified from mouse ascites fluids or tissue culture supernatant by affinity chromatography (protein A/G)
Predicted Protein Size:	34.7 kDa
Gene Name:	geranylgeranyl diphosphate synthase 1
Database Link:	NP_004828 Entrez Gene 9453 Human
Background:	This gene is a member of the prenyltransferase family and encodes a protein with geranylgeranyl diphosphate (GGPP) synthase activity. The enzyme catalyzes the synthesis of GGPP from farnesyl diphosphate and isopentenyl diphosphate. GGPP is an important molecule responsible for the C20-prenylation of proteins and for the regulation of a nuclear hormone receptor. Alternate transcriptional splice variants, encoding different isoforms, have been characterized. [provided by RefSeq]
Synonyms:	GGPPS; GGPPS1
Protein Pathways:	Metabolic pathways, Terpenoid backbone biosynthesis



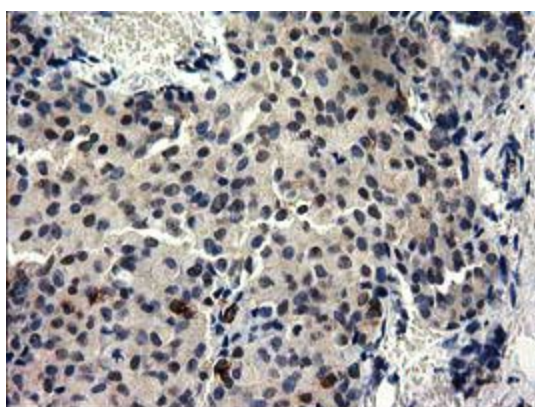
[View online »](#)

Product images:


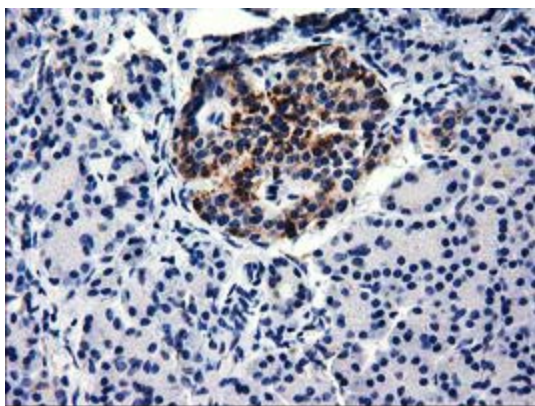
HEK293T cells were transfected with the pCMV6-ENTRY control (Left lane) or pCMV6-ENTRY GGPS1 ([RC202699], Right lane) cDNA for 48 hrs and lysed. Equivalent amounts of cell lysates (5 ug per lane) were separated by SDS-PAGE and immunoblotted with anti-GGPS1. Positive lysates [LY401517] (100ug) and [LC401517] (20ug) can be purchased separately from OriGene.



Western blot analysis of extracts (35ug) from 9 different cell lines by using anti-GGPS1 monoclonal antibody (HepG2: human; HeLa: human; SVT2: mouse; A549: human; COS7: monkey; Jurkat: human; MDCK: canine; PC12: rat; MCF7: human) (1:200).



Immunohistochemical staining of paraffin-embedded Adenocarcinoma of Human breast tissue using anti-GGPS1 mouse monoclonal antibody. (Heat-induced epitope retrieval by 10mM citric buffer, pH6.0, 100°C for 10min, TA501731)



Immunohistochemical staining of paraffin-embedded Human pancreas tissue within the normal limits using anti-GGPS1 mouse monoclonal antibody. (Heat-induced epitope retrieval by 10mM citric buffer, pH6.0, 100°C for 10min, TA501731)