

Product datasheet for **TA501629**

MOBKL2B (MOB3B) Mouse Monoclonal Antibody [Clone ID: OTI2H8]

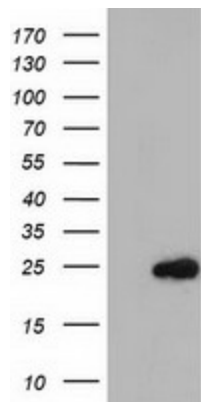
Product data:

Product Type:	Primary Antibodies
Clone Name:	OTI2H8
Applications:	FC, IF, WB
Recommend Dilution:	WB 1:2000, IF 1:100, FLOW 1:100
Reactivity:	Human
Host:	Mouse
Isotype:	IgG2b
Clonality:	Monoclonal
Immunogen:	Full length human recombinant protein of human MOBKL2B (NP_079037) produced in HEK293T cell.
Formulation:	PBS (PH 7.3) containing 1% BSA, 50% glycerol and 0.02% sodium azide.
Concentration:	0.86 mg/ml
Purification:	Purified from mouse ascites fluids or tissue culture supernatant by affinity chromatography (protein A/G)
Predicted Protein Size:	25.3 kDa
Gene Name:	MOB kinase activator 3B
Database Link:	NP_079037 Entrez Gene 79817 Human
Background:	The protein encoded by this gene shares similarity with the yeast Mob1 protein. Yeast Mob1 binds Mps1p, a protein kinase essential for spindle pole body duplication and mitotic checkpoint regulation. This gene is located on the opposite strand as the interferon kappa precursor (IFNK) gene. [provided by RefSeq]. COMPLETENESS: complete on the 3' end.
Synonyms:	C9orf35; MOB1D; MOBKL2B

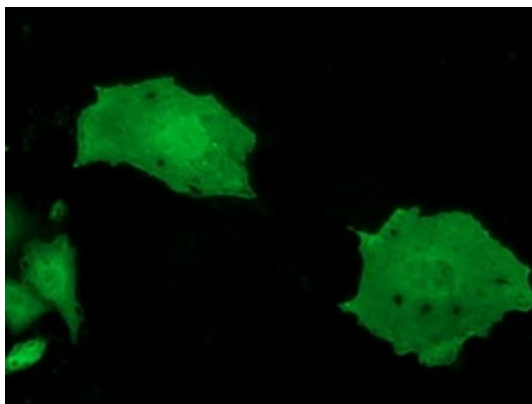


[View online »](#)

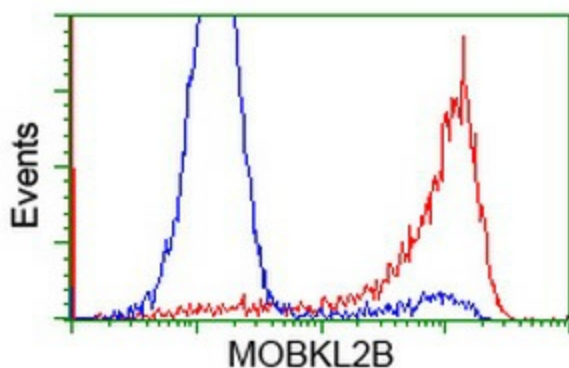
Product images:



HEK293T cells were transfected with the pCMV6-ENTRY control (Left lane) or pCMV6-ENTRY MOBKL2B ([RC205977], Right lane) cDNA for 48 hrs and lysed. Equivalent amounts of cell lysates (5 ug per lane) were separated by SDS-PAGE and immunoblotted with anti-MOBKL2B. Positive lysates [LY403025] (100ug) and [LC403025] (20ug) can be purchased separately from OriGene.



Anti-MOBKL2B mouse monoclonal antibody (TA501629) immunofluorescent staining of COS7 cells transiently transfected by pCMV6-ENTRY MOBKL2B ([RC205977]).



HEK293T cells transfected with either [RC205977] overexpress plasmid (Red) or empty vector control plasmid (Blue) were immunostained by anti-MOBKL2B antibody (TA501629), and then analyzed by flow cytometry.