

Product datasheet for TA501615

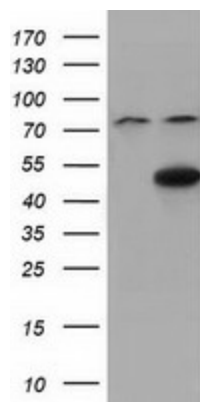
CBWD1 Mouse Monoclonal Antibody [Clone ID: OTI9H5]

Product data:

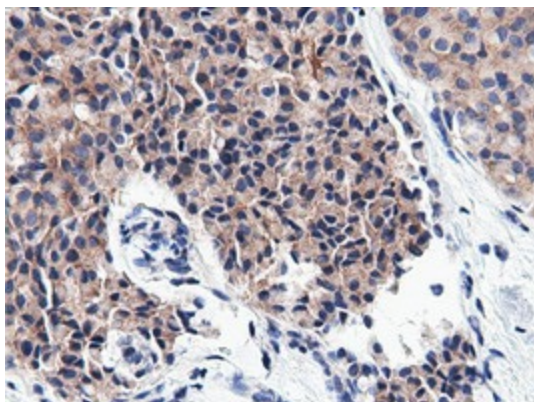
Product Type:	Primary Antibodies
Clone Name:	OTI9H5
Applications:	FC, IF, IHC, WB
Recommend Dilution:	WB 1:2000, IHC 1:150, IF 1:100, FLOW 1:100
Reactivity:	Human
Host:	Mouse
Isotype:	IgG2b
Clonality:	Monoclonal
Immunogen:	Full length human recombinant protein of human CBWD1 (NP_060961) produced in HEK293T cell.
Formulation:	PBS (PH 7.3) containing 1% BSA, 50% glycerol and 0.02% sodium azide.
Concentration:	0.83 mg/ml
Purification:	Purified from mouse ascites fluids or tissue culture supernatant by affinity chromatography (protein A/G)
Predicted Protein Size:	43.9 kDa
Gene Name:	COBW domain containing 1
Database Link:	NP_060961 Entrez Gene 55871 Human
Synonyms:	COBP



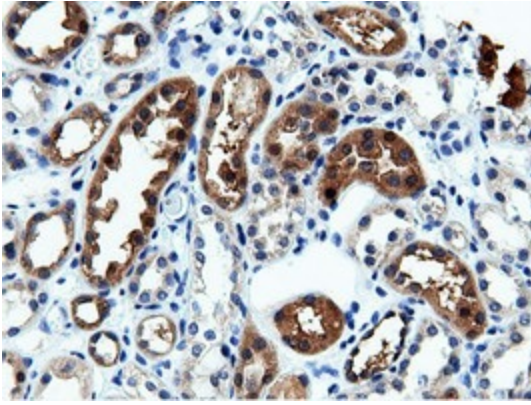
[View online »](#)

Product images:

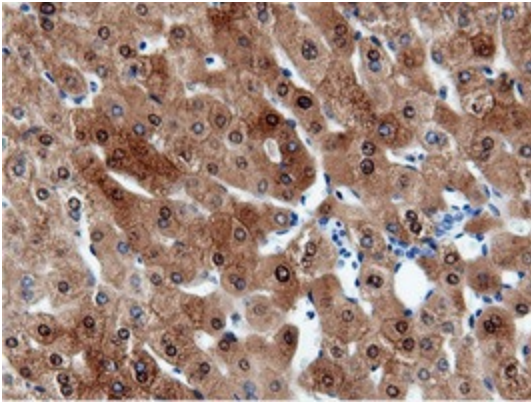
HEK293T cells were transfected with the pCMV6-ENTRY control (Left lane) or pCMV6-ENTRY CBWD1 ([RC222790], Right lane) cDNA for 48 hrs and lysed. Equivalent amounts of cell lysates (5 ug per lane) were separated by SDS-PAGE and immunoblotted with anti-CBWD1. Positive lysates [LY402692] (100ug) and [LC402692] (20ug) can be purchased separately from OriGene.



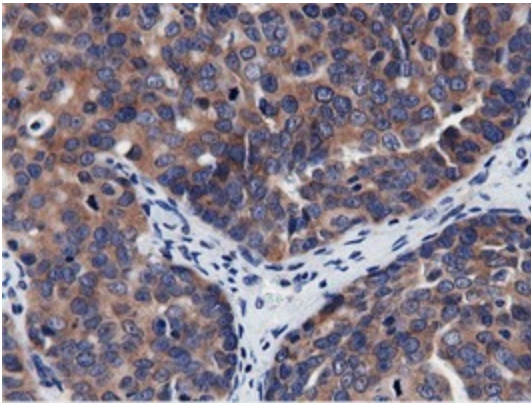
Immunohistochemical staining of paraffin-embedded Adenocarcinoma of Human breast tissue using anti-CBWD1 mouse monoclonal antibody. (Heat-induced epitope retrieval by 10mM citric buffer, pH6.0, 100°C for 10min, TA501615)



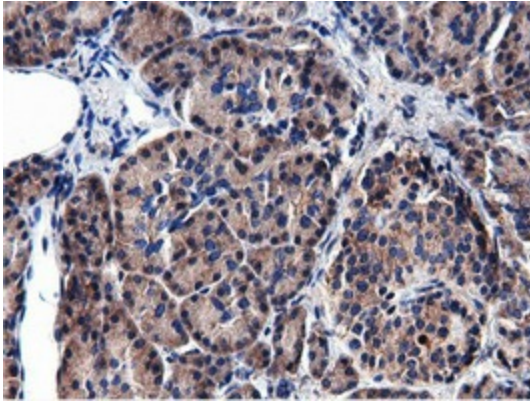
Immunohistochemical staining of paraffin-embedded Human Kidney tissue within the normal limits using anti-CBWD1 mouse monoclonal antibody. (Heat-induced epitope retrieval by 10mM citric buffer, pH6.0, 100°C for 10min, TA501615)



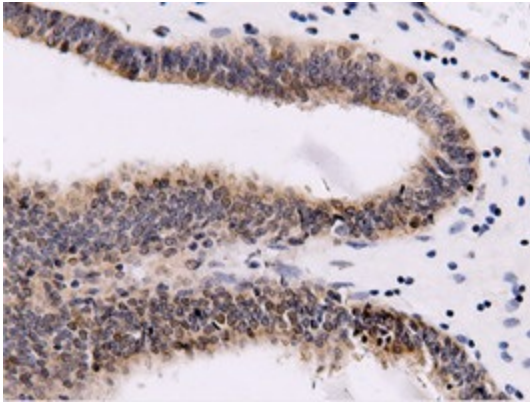
Immunohistochemical staining of paraffin-embedded Human liver tissue within the normal limits using anti-CBWD1 mouse monoclonal antibody. (Heat-induced epitope retrieval by 10mM citric buffer, pH6.0, 100°C for 10min, TA501615)



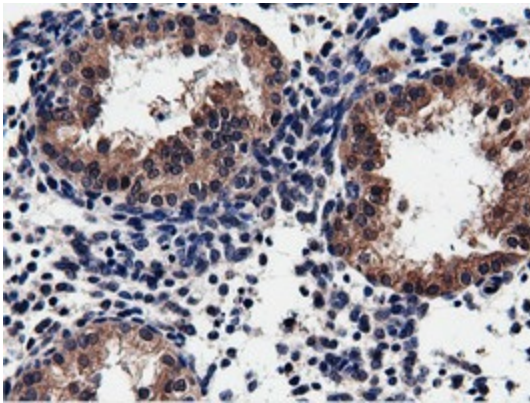
Immunohistochemical staining of paraffin-embedded Adenocarcinoma of Human ovary tissue using anti-CBWD1 mouse monoclonal antibody. (Heat-induced epitope retrieval by 10mM citric buffer, pH6.0, 100°C for 10min, TA501615)



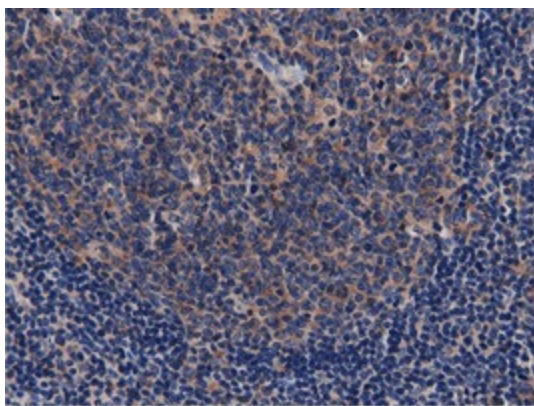
Immunohistochemical staining of paraffin-embedded Human pancreas tissue within the normal limits using anti-CBWD1 mouse monoclonal antibody. (Heat-induced epitope retrieval by 10mM citric buffer, pH6.0, 100°C for 10min, TA501615)



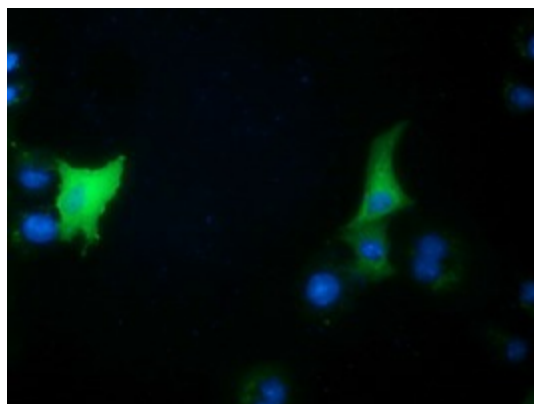
Immunohistochemical staining of paraffin-embedded Adenocarcinoma of Human endometrium tissue using anti-CBWD1 mouse monoclonal antibody. (Heat-induced epitope retrieval by 10mM citric buffer, pH6.0, 100°C for 10min, TA501615)



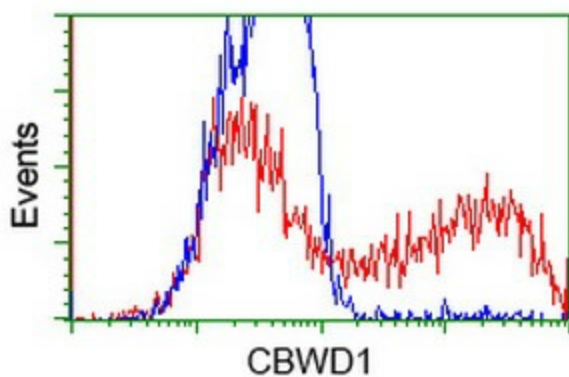
Immunohistochemical staining of paraffin-embedded Carcinoma of Human prostate tissue using anti-CBWD1 mouse monoclonal antibody. (Heat-induced epitope retrieval by 10mM citric buffer, pH6.0, 100°C for 10min, TA501615)



Immunohistochemical staining of paraffin-embedded Human lymph node tissue within the normal limits using anti-CBWD1 mouse monoclonal antibody. (Heat-induced epitope retrieval by 10mM citric buffer, pH6.0, 100°C for 10min, TA501615)



Anti-CBWD1 mouse monoclonal antibody (TA501615) immunofluorescent staining of COS7 cells transiently transfected by pCMV6-ENTRY CBWD1 ([RC222790]).



HEK293T cells transfected with either [RC222790] overexpress plasmid (Red) or empty vector control plasmid (Blue) were immunostained by anti-CBWD1 antibody (TA501615), and then analyzed by flow cytometry.