

## Product datasheet for **TA501308**

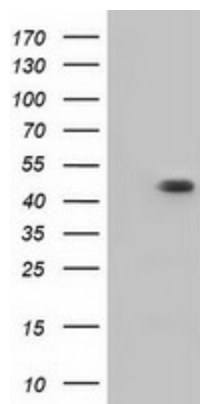
### **C9orf41 (CARNMT1) Mouse Monoclonal Antibody [Clone ID: OTI4B7]**

#### **Product data:**

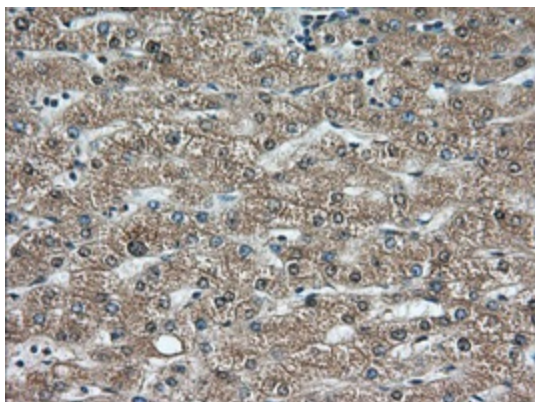
<b>Product Type:</b>	Primary Antibodies
<b>Clone Name:</b>	OTI4B7
<b>Applications:</b>	FC, IF, IHC, WB
<b>Recommend Dilution:</b>	WB 1:1000~2000, IHC 1:50, IF 1:100, FLOW 1:100
<b>Reactivity:</b>	Human
<b>Host:</b>	Mouse
<b>Isotype:</b>	IgG2a
<b>Clonality:</b>	Monoclonal
<b>Immunogen:</b>	Full length human recombinant protein of human C9orf41 (NP_689663) produced in HEK293T cell.
<b>Formulation:</b>	PBS (pH 7.3) containing 1% BSA, 50% glycerol and 0.02% sodium azide.
<b>Concentration:</b>	0.87 mg/ml
<b>Purification:</b>	Purified from mouse ascites fluids or tissue culture supernatant by affinity chromatography (protein A/G)
<b>Predicted Protein Size:</b>	47.0 kDa
<b>Gene Name:</b>	carnosine N-methyltransferase 1
<b>Database Link:</b>	<a href="#">NP_689633</a> <a href="#">Entrez Gene 138199</a> <a href="#">Human</a>
<b>Synonyms:</b>	C9orf41; UPF0586



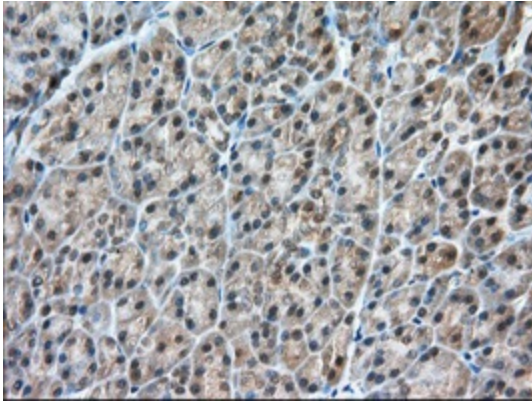
[View online »](#)

**Product images:**

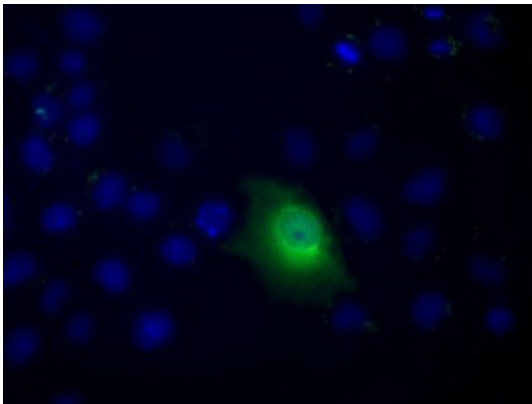
HEK293T cells were transfected with the pCMV6-ENTRY control (Left lane) or pCMV6-ENTRY C9orf41 ([RC205116], Right lane) cDNA for 48 hrs and lysed. Equivalent amounts of cell lysates (5 ug per lane) were separated by SDS-PAGE and immunoblotted with anti-C9orf41. Positive lysates [LY403480] (100ug) and [LC403480] (20ug) can be purchased separately from OriGene.



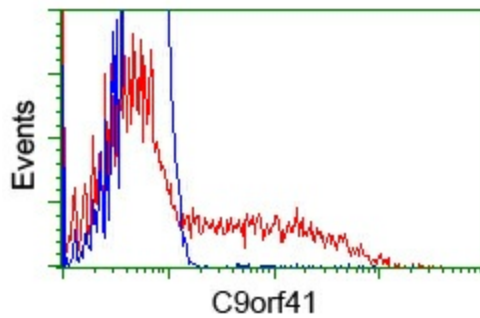
Immunohistochemical staining of paraffin-embedded Human liver tissue within the normal limits using anti-C9orf41 mouse monoclonal antibody. (Heat-induced epitope retrieval by 10mM citric buffer, pH6.0, 100°C for 10min, TA501308, Dilution 1:50)



Immunohistochemical staining of paraffin-embedded Human pancreas tissue within the normal limits using anti-C9orf41 mouse monoclonal antibody. (Heat-induced epitope retrieval by 10mM citric buffer, pH6.0, 100°C for 10min, TA501308, Dilution 1:50)



Anti-C9orf41 mouse monoclonal antibody (TA501308) immunofluorescent staining of COS7 cells transiently transfected by pCMV6-ENTRY C9orf41 ([RC205116]).



HEK293T cells transfected with either [RC205116] overexpress plasmid (Red) or empty vector control plasmid (Blue) were immunostained by anti-C9orf41 antibody (TA501308), and then analyzed by flow cytometry.