

Product datasheet for TA501158

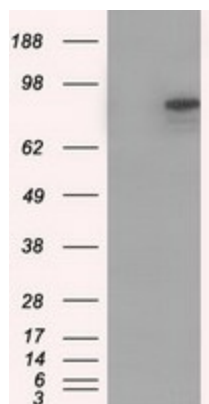
CDHH (CDH13) Mouse Monoclonal Antibody [Clone ID: OTI3H6]

Product data:

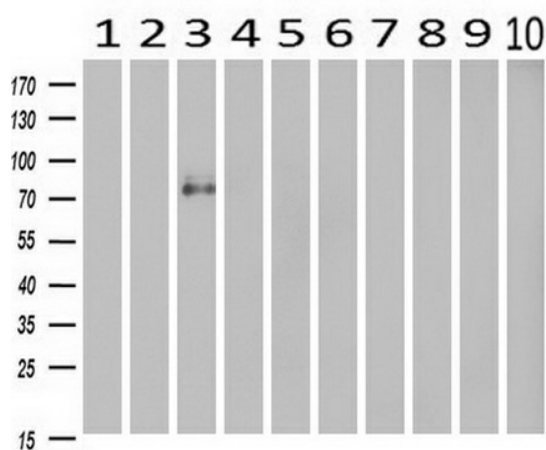
Product Type:	Primary Antibodies
Clone Name:	OTI3H6
Applications:	IF, WB
Recommend Dilution:	WB 1:2000, IF 1:100, Flow 1:100
Reactivity:	Human
Host:	Mouse
Isotype:	IgG1
Clonality:	Monoclonal
Immunogen:	Full length human recombinant protein of human CDH13 (NP_001248) produced in HEK293T cell.
Formulation:	PBS (pH 7.3) containing 1% BSA, 50% glycerol and 0.02% sodium azide.
Concentration:	0.41 mg/ml
Purification:	Purified from mouse ascites fluids or tissue culture supernatant by affinity chromatography (protein A/G)
Predicted Protein Size:	75.9 kDa
Gene Name:	cadherin 13
Database Link:	NP_001248 Entrez Gene 1012 Human
Background:	This gene is a member of the cadherin superfamily. The encoded protein is a calcium dependent cell-cell adhesion glycoprotein comprised of five extracellular cadherin repeats, a transmembrane region but, unlike the typical cadherin superfamily member, lacks the highly conserved cytoplasmic region. This particular cadherin is a putative mediator of cell-cell interaction in the heart and may act as a negative regulator of neural cell growth. The gene locus is hypermethylated or deleted in breast, ovarian and lung cancers. Two major mRNA transcripts encoding identical proteins are found, products of alternative polyadenylation sites
Synonyms:	CDHH; P105



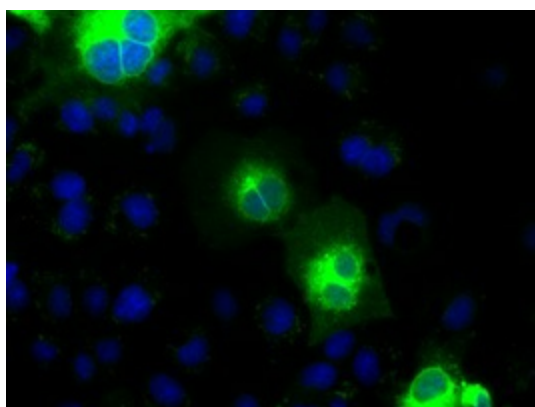
[View online »](#)

Product images:


HEK293T cells were transfected with the pCMV6-ENTRY control (Left lane) or pCMV6-ENTRY CDH13 ([RC206068], Right lane) cDNA for 48 hrs and lysed. Equivalent amounts of cell lysates (5 ug per lane) were separated by SDS-PAGE and immunoblotted with anti-CDH13. Positive lysates [LY400505] (100ug) and [LC400505] (20ug) can be purchased separately from OriGene.



Western blot analysis of extracts (10ug) from 10 Human tissue by using anti-CDH13 monoclonal antibody at 1:500 (1: Testis; 2: Omentum; 3: Uterus; 4: Breast; 5: Brain; 6: Liver; 7: Ovary; 8: Thyroid gland; 9: colon; 10: spleen).



Anti-CDH13 mouse monoclonal antibody (TA501158) immunofluorescent staining of COS7 cells transiently transfected by pCMV6-ENTRY CDH13 ([RC206068]).