

## Product datasheet for TA500997

### SIL1 Mouse Monoclonal Antibody [Clone ID: OTI3E3]

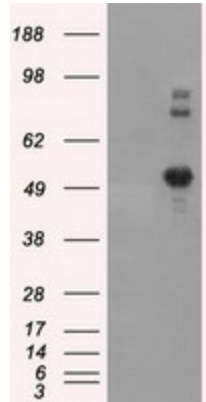
#### Product data:

Product Type:	Primary Antibodies
Clone Name:	OTI3E3
Applications:	FC, IF, IHC, WB
Recommend Dilution:	IHC 1:100~500, WB: 1:200
Reactivity:	Human
Host:	Mouse
Isotype:	IgG1
Clonality:	Monoclonal
Immunogen:	Full length human recombinant protein of human SIL1 (NP_071909) produced in HEK293T cell.
Formulation:	PBS (pH 7.3) containing 1% BSA, 50% glycerol and 0.02% sodium azide.
Concentration:	0.56 mg/ml
Purification:	Purified from mouse ascites fluids or tissue culture supernatant by affinity chromatography (protein A/G)
Predicted Protein Size:	52.1 kDa
Gene Name:	SIL1 nucleotide exchange factor
Database Link:	<a href="#">NP_071909 Entrez Gene 64374 Human</a>
Background:	This gene encodes a resident endoplasmic reticulum (ER), N-linked glycoprotein with an N-terminal ER targeting sequence, 2 putative N-glycosylation sites, and a C-terminal ER retention signal. This protein functions as a nucleotide exchange factor for another unfolded protein response protein. Mutations in this gene have been associated with Marinesco-Sjogren syndrome. Alternate transcriptional splice variants have been characterized.
Synonyms:	BAP; MSS; ULG5
Protein Families:	Protease, Secreted Protein, Transmembrane

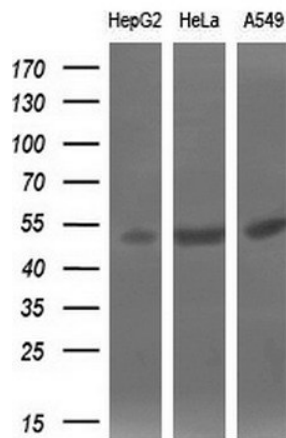


[View online »](#)

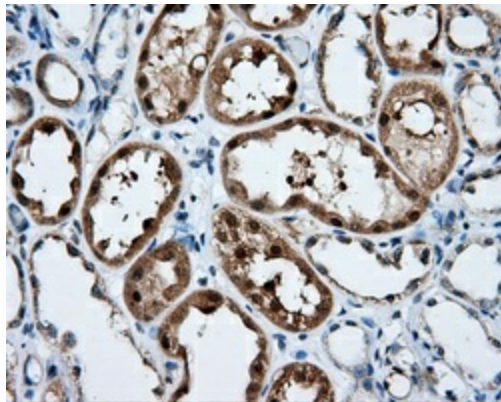
## Product images:



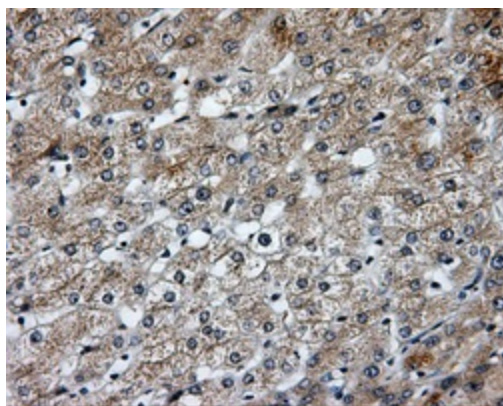
HEK293T cells were transfected with the pCMV6-ENTRY control (Left lane) or pCMV6-ENTRY SIL1 ([RC211850], Right lane) cDNA for 48 hrs and lysed. Equivalent amounts of cell lysates (5 ug per lane) were separated by SDS-PAGE and immunoblotted with anti-SIL1. Positive lysates [LY402924] (100ug) and [LC402924] (20ug) can be purchased separately from OriGene.



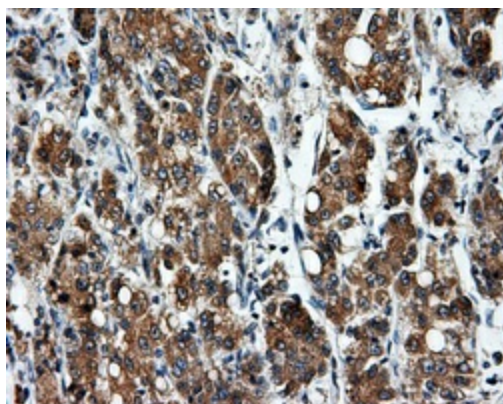
Western blot analysis of extracts (10ug) from 3 different cell lines by using anti-SIL1 monoclonal antibody (1:200).



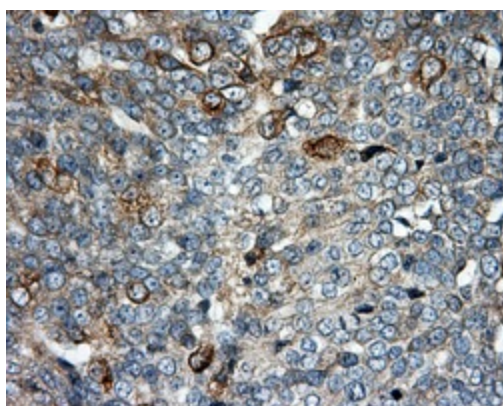
Immunohistochemical staining of paraffin-embedded Kidney tissue within the normal limits using anti-SIL1 mouse monoclonal antibody. (Heat-induced epitope retrieval by 10mM citric buffer, pH6.0, 100°C for 10min, TA500997, Dilution 1:50)



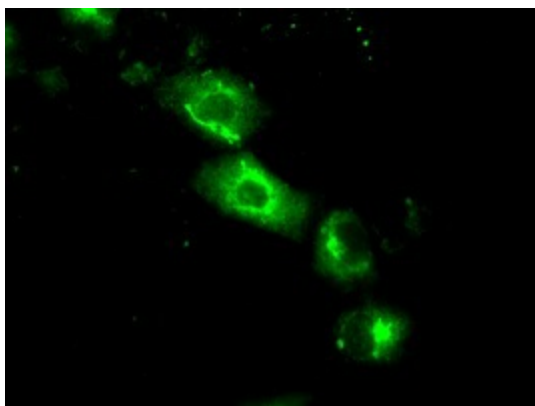
Immunohistochemical staining of paraffin-embedded liver tissue within the normal limits using anti-SIL1 mouse monoclonal antibody. (Heat-induced epitope retrieval by 10mM citric buffer, pH6.0, 100°C for 10min, TA500997, Dilution 1:50)



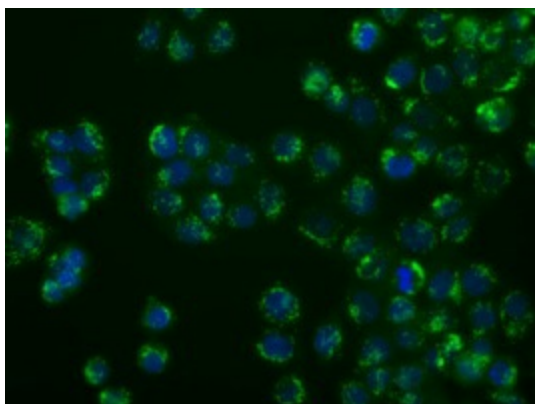
Immunohistochemical staining of paraffin-embedded Carcinoma of liver tissue using anti-SIL1 mouse monoclonal antibody. (Heat-induced epitope retrieval by 10mM citric buffer, pH6.0, 100°C for 10min, TA500997, Dilution 1:50)



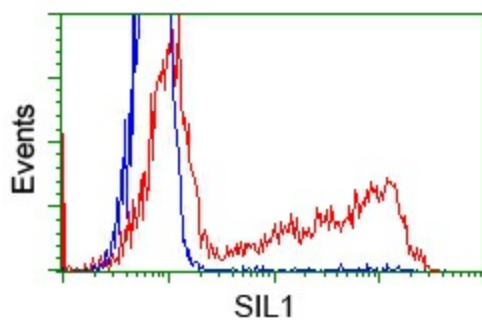
Immunohistochemical staining of paraffin-embedded Adenocarcinoma of ovary tissue using anti-SIL1 mouse monoclonal antibody. (Heat-induced epitope retrieval by 10mM citric buffer, pH6.0, 100°C for 10min, TA500997, Dilution 1:50)



Anti-SIL1 mouse monoclonal antibody (TA500997) immunofluorescent staining of COS7 cells transiently transfected by pCMV6-ENTRY SIL1 ([RC211850]).



Immunofluorescent staining of HT29 cells using anti-SIL1 mouse monoclonal antibody (TA500997).



HEK293T cells transfected with either pCMV6-ENTRY SIL1 ([RC211850]) (Red) or empty vector control plasmid (Blue) were immunostained with anti-SIL1 mouse monoclonal (TA500997), and then analyzed by flow cytometry.