

Product datasheet for **TA500963**

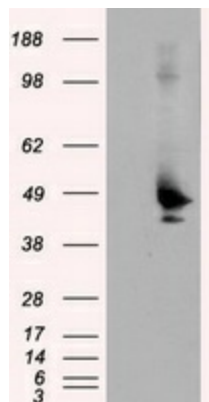
KIAA1609 (TLDC1) Mouse Monoclonal Antibody [Clone ID: OTI13H6]

Product data:

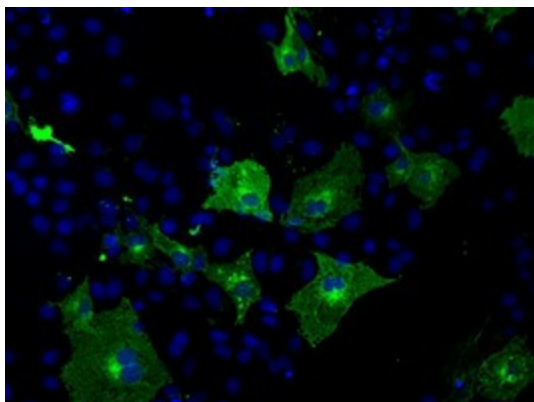
Product Type:	Primary Antibodies
Clone Name:	OTI13H6
Applications:	IF, WB
Recommend Dilution:	WB 1:2000, IF 1:100
Reactivity:	Human
Host:	Mouse
Isotype:	IgG1
Clonality:	Monoclonal
Immunogen:	Full length human recombinant protein of human KIAA1609 (NP_065998) produced in HEK293T cell.
Formulation:	PBS (pH 7.3) containing 1% BSA, 50% glycerol and 0.02% sodium azide.
Concentration:	0.91 mg/ml
Purification:	Purified from mouse ascites fluids or tissue culture supernatant by affinity chromatography (protein A/G)
Predicted Protein Size:	51.0 kDa
Gene Name:	MTOR associated protein, eak-7 homolog
Database Link:	NP_065998 Entrez Gene 57707 Human
Synonyms:	KIAA1609



[View online »](#)

Product images:

HEK293T cells were transfected with the pCMV6-ENTRY control (Left lane) or pCMV6-ENTRY KIAA1609 ([RC209287], Right lane) cDNA for 48 hrs and lysed. Equivalent amounts of cell lysates (5 ug per lane) were separated by SDS-PAGE and immunoblotted with anti-KIAA1609. Positive lysates [LY402813] (100ug) and [LC402813] (20ug) can be purchased separately from OriGene.



Anti-KIAA1609 mouse monoclonal antibody (TA500963) immunofluorescent staining of COS7 cells transiently transfected by pCMV6-ENTRY KIAA1609 ([RC209287]).