

## Product datasheet for TA500951

### CUG BP1 (CELF1) Mouse Monoclonal Antibody [Clone ID: OTI5B8]

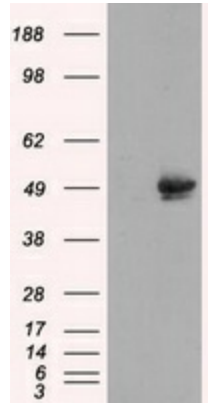
#### Product data:

Product Type:	Primary Antibodies
Clone Name:	OTI5B8
Applications:	IF, IHC, WB
Recommend Dilution:	WB 1:2000, IHC 1:50, IF 1:100
Reactivity:	Human
Host:	Mouse
Isotype:	IgG2b
Clonality:	Monoclonal
Immunogen:	Full length human recombinant protein of human CUGBP1 (NP_006551) produced in HEK293T cell.
Formulation:	PBS (pH 7.3) containing 1% BSA, 50% glycerol and 0.02% sodium azide.
Concentration:	0.99 mg/ml
Purification:	Purified from mouse ascites fluids or tissue culture supernatant by affinity chromatography (protein A/G)
Predicted Protein Size:	52.0 kDa
Gene Name:	CUGBP Elav-like family member 1
Database Link:	<a href="#">NP_006551</a> <a href="#">Entrez Gene 10658 Human</a>
Background:	Members of the CELF/BRUNOL protein family contain two N-terminal RNA recognition motif (RRM) domains, one C-terminal RRM domain, and a divergent segment of 160-230 aa between the second and third RRM domains. Members of this protein family regulate pre-mRNA alternative splicing and may also be involved in mRNA editing, and translation. This gene may play a role in myotonic dystrophy type 1 (DM1) via interactions with the dystrophin myotonic-protein kinase (DMPK) gene. Alternative splicing results in multiple transcript variants encoding different isoforms.
Synonyms:	BRUNOL2; CUG-BP; CUGBP; CUGBP1; EDEN-BP; hNab50; NAB50; NAPOR
Protein Families:	Druggable Genome

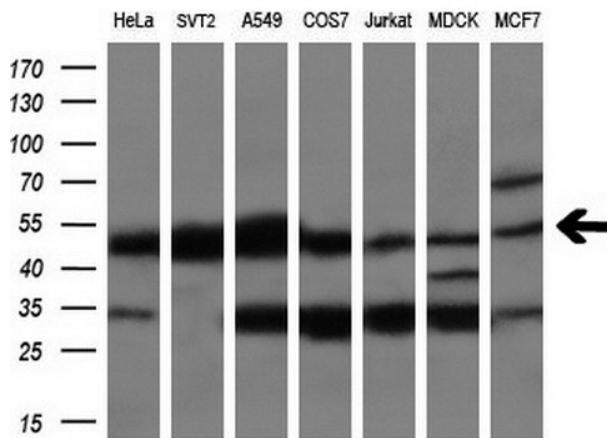


[View online »](#)

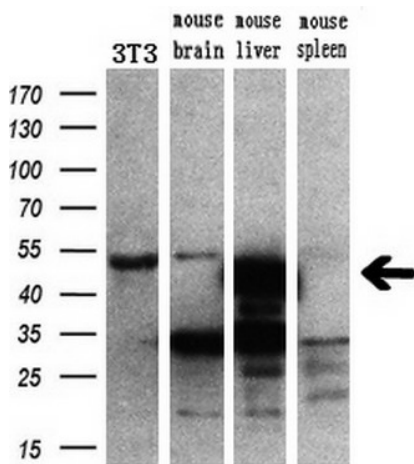
Product images:



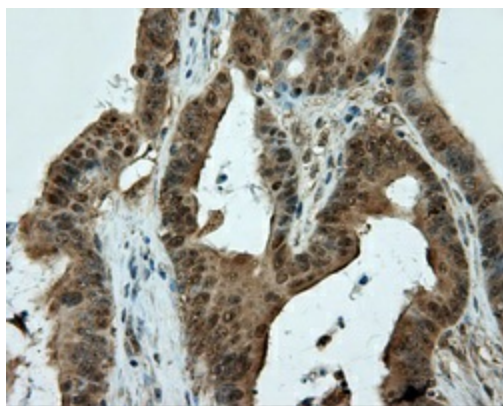
HEK293T cells were transfected with the pCMV6-ENTRY control (Left lane) or pCMV6-ENTRY CUGBP1 ([RC206275], Right lane) cDNA for 48 hrs and lysed. Equivalent amounts of cell lysates (5 ug per lane) were separated by SDS-PAGE and immunoblotted with anti-CUGBP1. Positive lysates [LY401964] (100ug) and [LC401964] (20ug) can be purchased separately from OriGene.



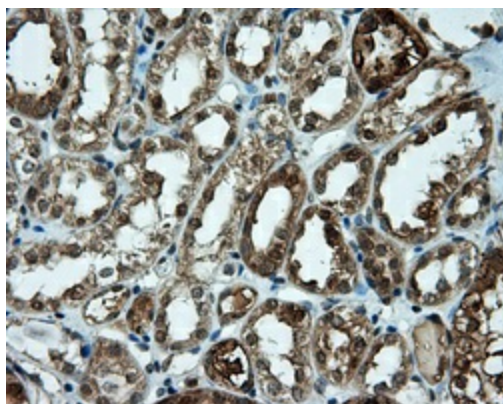
Western blot analysis of extracts (10ug) from 7 different cell lines by using anti-CUGBP1 monoclonal antibody (1:200).



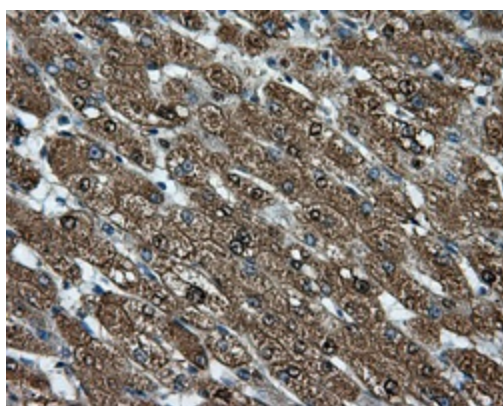
Western blot analysis of extracts (10ug) from a mouse cell line and 3 different mouse tissues by using anti-CUGBP1 monoclonal antibody (1:200).



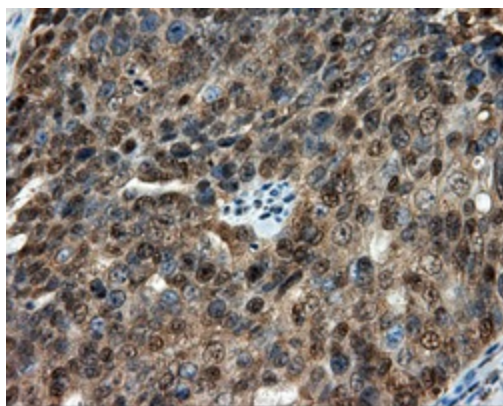
Immunohistochemical staining of paraffin-embedded Adenocarcinoma of colon tissue using anti-CUGBP1 mouse monoclonal antibody. (Heat-induced epitope retrieval by 10mM citric buffer, pH6.0, 100°C for 10min, TA500951, Dilution 1:50)



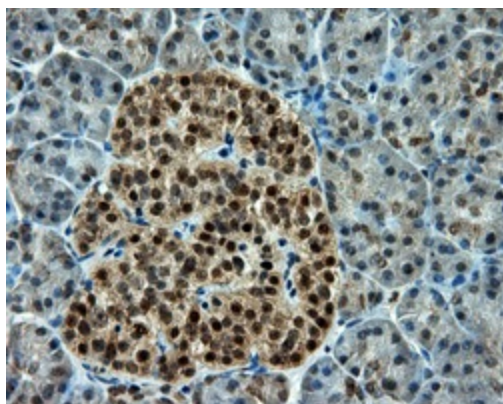
Immunohistochemical staining of paraffin-embedded Kidney tissue within the normal limits using anti-CUGBP1 mouse monoclonal antibody. (Heat-induced epitope retrieval by 10mM citric buffer, pH6.0, 100°C for 10min, TA500951, Dilution 1:50)



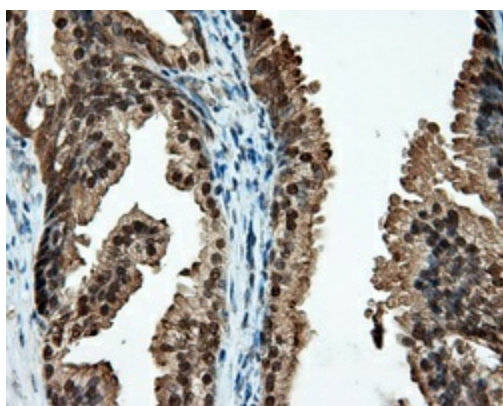
Immunohistochemical staining of paraffin-embedded liver tissue within the normal limits using anti-CUGBP1 mouse monoclonal antibody. (Heat-induced epitope retrieval by 10mM citric buffer, pH6.0, 100°C for 10min, TA500951, Dilution 1:50)



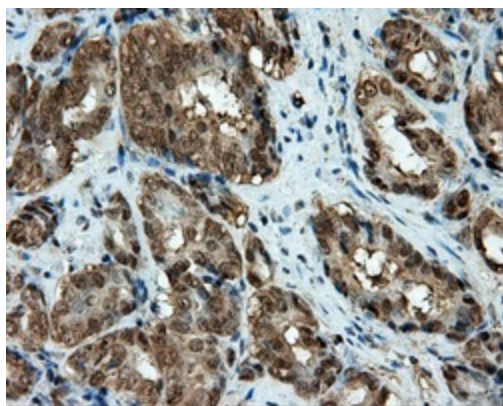
Immunohistochemical staining of paraffin-embedded Adenocarcinoma of ovary tissue using anti-CUGBP1 mouse monoclonal antibody. (Heat-induced epitope retrieval by 10mM citric buffer, pH6.0, 100°C for 10min, TA500951, Dilution 1:50)



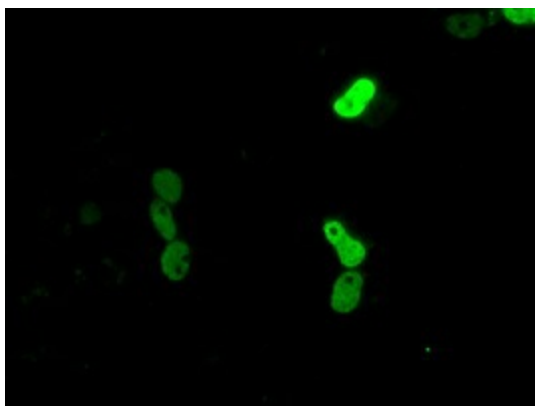
Immunohistochemical staining of paraffin-embedded pancreas tissue within the normal limits using anti-CUGBP1 mouse monoclonal antibody. (Heat-induced epitope retrieval by 10mM citric buffer, pH6.0, 100°C for 10min, TA500951, Dilution 1:50)



Immunohistochemical staining of paraffin-embedded prostate tissue within the normal limits using anti-CUGBP1 mouse monoclonal antibody. (Heat-induced epitope retrieval by 10mM citric buffer, pH6.0, 100°C for 10min, TA500951, Dilution 1:50)



Immunohistochemical staining of paraffin-embedded Carcinoma of prostate tissue using anti-CUGBP1 mouse monoclonal antibody. (Heat-induced epitope retrieval by 10mM citric buffer, pH6.0, 100°C for 10min, TA500951, Dilution 1:50)



Anti-CUGBP1 mouse monoclonal antibody (TA500951) immunofluorescent staining of COS7 cells transiently transfected by pCMV6-ENTRY CUGBP1 ([RC206275]).