

Product datasheet for TA500733

CD26 (DPP4) Mouse Monoclonal Antibody [Clone ID: OTI11D7]

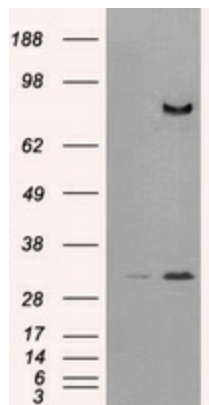
Product data:

Product Type:	Primary Antibodies
Clone Name:	OTI11D7
Applications:	FC, IF, IHC, WB
Recommend Dilution:	WB 1:500, IHC 1:50, IF 1:100, Flow 1:100
Reactivity:	Human
Host:	Mouse
Isotype:	IgG1
Clonality:	Monoclonal
Immunogen:	Full length human recombinant protein of human DPP4 (NP_001926) produced in HEK293T cell.
Formulation:	PBS (pH 7.3) containing 1% BSA, 50% glycerol and 0.02% sodium azide.
Concentration:	1 mg/ml
Purification:	Purified from mouse ascites fluids or tissue culture supernatant by affinity chromatography (protein A/G)
Predicted Protein Size:	88.3 kDa
Gene Name:	dipeptidyl peptidase 4
Database Link:	NP_001926 Entrez Gene 1803 Human
Background:	The protein encoded by this gene is identical to adenosine deaminase complexing protein-2, and to the T-cell activation antigen CD26. It is an intrinsic membrane glycoprotein and a serine exopeptidase that cleaves X-proline dipeptides from the N-terminus of polypeptides.
Synonyms:	ADABP; ADCP2; CD26; DPPIV; TP103
Protein Families:	Druggable Genome, Protease, Secreted Protein, Transmembrane



[View online »](#)

Product images:



HEK293T cells were transfected with the pCMV6-ENTRY control (Left lane) or pCMV6-ENTRY DPP4 ([RC209466], Right lane) cDNA for 48 hrs and lysed. Equivalent amounts of cell lysates (5 ug per lane) were separated by SDS-PAGE and immunoblotted with anti-DPP4. Positive lysates [LY419637] (100ug) and [LC419637] (20ug) can be purchased separately from OriGene.

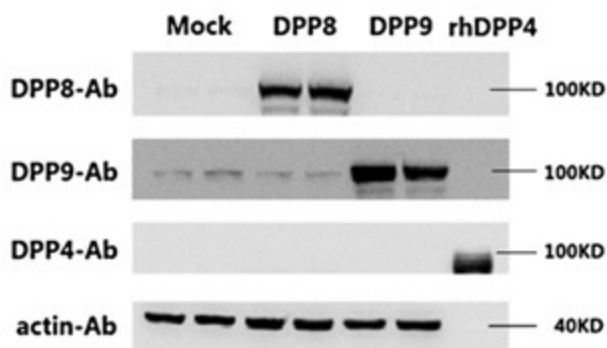


Figure from citation: Western blot analysis of protein levels of DPP4/8/9 in 293E cells transfected with pcDNA3.1 (Mock), pcDNA3.1-hDPP8 (DPP8) and pcDNA3.1-hDPP9 (DPP9), the purified recombinant human DPP4 protein (rhDPP4) was used as a positive control for the DPP4 antibody, antibodies targeting human DPP4/8/9 (TA500733/[TA504366]/[TA504040]) and β -actin ([TA310155]) were purchased from OriGene. [View Citation](#)

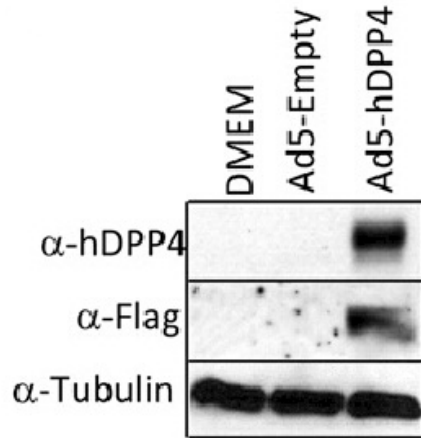
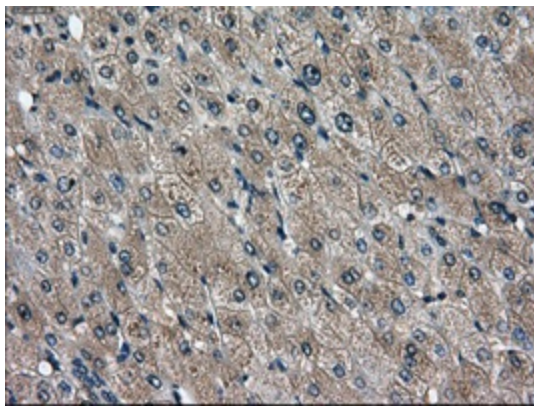


Figure from citation: Western Blot of DPP4 protein level by using anti-DPP4 antibody in mouse MLE15 cells. [View Citation](#)



Immunohistochemical staining of paraffin-embedded liver tissue within the normal limits using anti-DPP4 mouse monoclonal antibody. (Heat-induced epitope retrieval by 10mM citric buffer, pH6.0, 100°C for 10min, TA500733, Dilution 1:50)

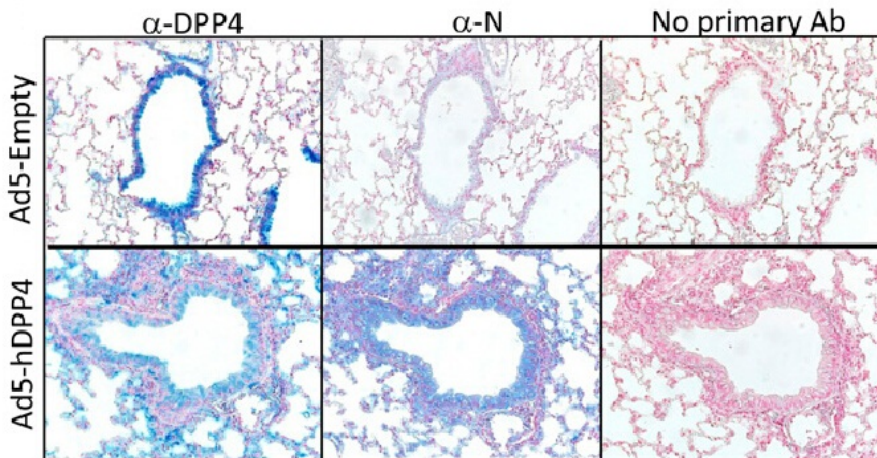
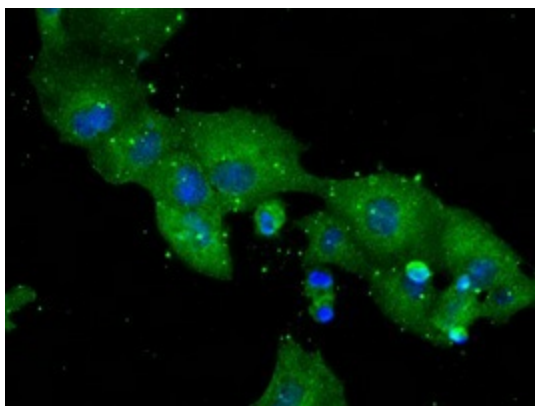
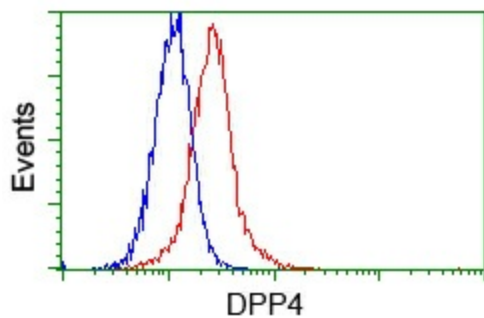


Figure from citation: Immunohistochemistry of DPP4 protein level by using anti-DPP4 antibody in lungs harvested from BALB/c mice at day 3. Dilution: 1:800 [View Citation](#)



Anti-DPP4 mouse monoclonal antibody (TA500733) immunofluorescent staining of COS7 cells transiently transfected by pCMV6-ENTRY DPP4 ([RC209466]).



Flow cytometric analysis of Hela cells, using anti-DPP4 antibody (TA500733), (Red) compared to a nonspecific negative control antibody ([TA50011]) (Blue).