

Product datasheet for TA500511

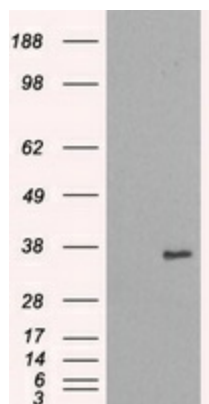
NEK6 Mouse Monoclonal Antibody [Clone ID: OTI8G5]

Product data:

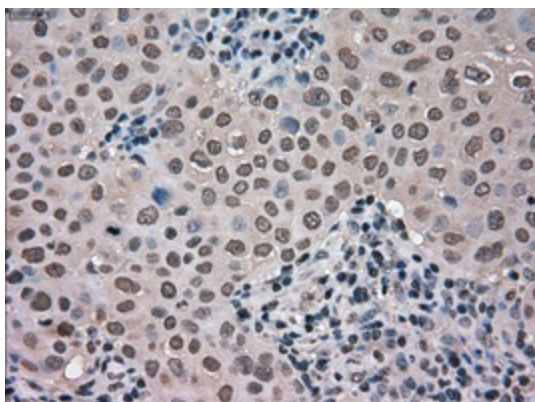
Product Type:	Primary Antibodies
Clone Name:	OTI8G5
Applications:	IF, IHC, IP, WB
Recommend Dilution:	WB 1:2000, IHC 1:50, IF 1:100, Flow 1:500, IP 2-4ug/mg
Reactivity:	Human
Host:	Mouse
Isotype:	IgG1
Clonality:	Monoclonal
Immunogen:	Full-length protein expressed in 293T cell transfected with human NEK6 expression vector
Formulation:	PBS (pH 7.3) containing 1% BSA, 50% glycerol and 0.02% sodium azide.
Concentration:	0.74 mg/ml
Purification:	Purified from mouse ascites fluids or tissue culture supernatant by affinity chromatography (protein A/G)
Predicted Protein Size:	35.7 kDa
Gene Name:	NIMA related kinase 6
Database Link:	NP_055212 Entrez Gene 10783 Human
Background:	The <i>Aspergillus nidulans</i> 'never in mitosis A' (NIMA) gene encodes a serine/threonine kinase that controls initiation of mitosis. NIMA-related kinases (NEKs) are a group of protein kinases that are homologous to NIMA. Evidence suggests that NEKs perform functions similar to those of NIMA
Synonyms:	SID6-1512
Protein Families:	Druggable Genome, Protein Kinase



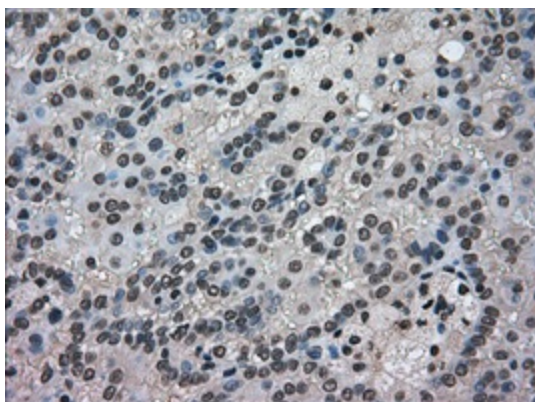
[View online »](#)

Product images:

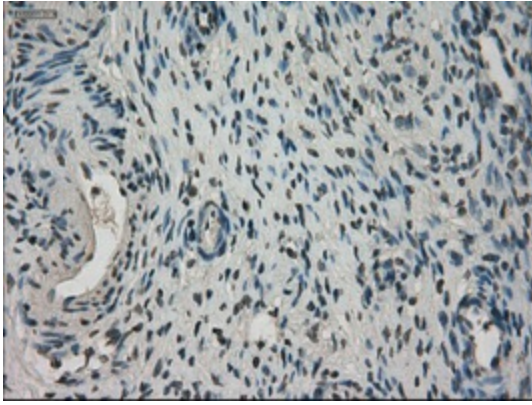
HEK293T cells were transfected with the pCMV6-ENTRY control (Left lane) or pCMV6-ENTRY NEK6 ([RC203609], Right lane) cDNA for 48 hrs and lysed. Equivalent amounts of cell lysates (5 ug per lane) were separated by SDS-PAGE and immunoblotted with anti-NEK6. Positive lysates [LY402327] (100ug) and [LC402327] (20ug) can be purchased separately from OriGene.



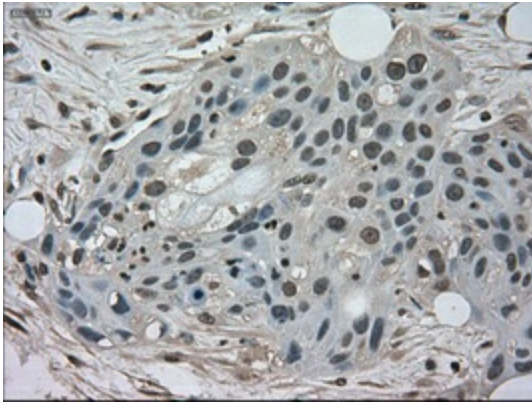
Immunohistochemical staining of paraffin-embedded Adenocarcinoma of breast tissue using anti-NEK6 mouse monoclonal antibody. (Heat-induced epitope retrieval by 10mM citric buffer, pH6.0, 100°C for 10min, TA500511, Dilution 1:50)



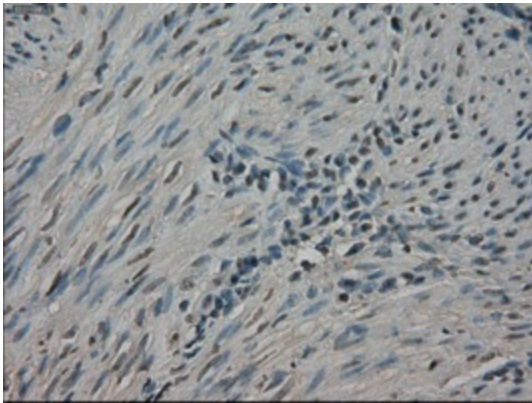
Immunohistochemical staining of paraffin-embedded Carcinoma of kidney tissue using anti-NEK6 mouse monoclonal antibody. (Heat-induced epitope retrieval by 10mM citric buffer, pH6.0, 100°C for 10min, TA500511, Dilution 1:50)



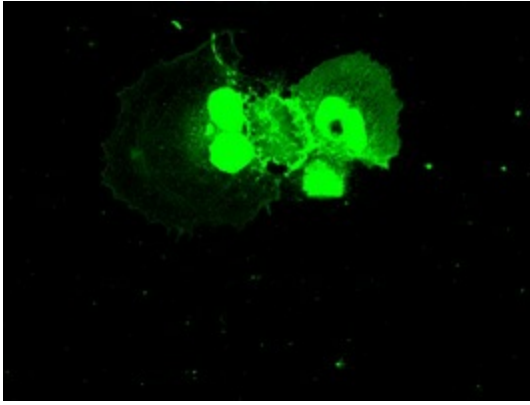
Immunohistochemical staining of paraffin-embedded Ovary tissue within the normal limits using anti-NEK6mouse monoclonal antibody. (Heat-induced epitope retrieval by 10mM citric buffer, pH6.0, 100°C for 10min, TA500511, Dilution 1:50)



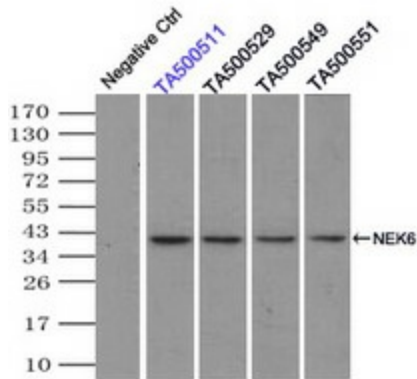
Immunohistochemical staining of paraffin-embedded Carcinoma of pancreas tissue using anti-NEK6mouse monoclonal antibody. (Heat-induced epitope retrieval by 10mM citric buffer, pH6.0, 100°C for 10min, TA500511, Dilution 1:50)



Immunohistochemical staining of paraffin-embedded endometrium tissue within the normal limits using anti-NEK6mouse monoclonal antibody. (Heat-induced epitope retrieval by 10mM citric buffer, pH6.0, 100°C for 10min, TA500511, Dilution 1:50)



Anti-NEK6 mouse monoclonal antibody (TA500511) immunofluorescent staining of COS7 cells transiently transfected by pCMV6-ENTRY NEK6 ([RC203609]).



Immunoprecipitation of NEK6 by using TrueMab monoclonal anti-NEK6 antibody (Negative control: IP without adding anti-NEK6 antibody). For each experiment, 500ul of DDK tagged NEK6 overexpression lysates (at 1:5 dilution with HEK293T lysate), 2ug of anti-NEK6 antibody and 20ul (0.1 mg) of goat anti-mouse conjugated magnetic beads were mixed and incubated overnight. After extensive wash to remove any non-specific binding, the immuno-precipitated products were analyzed with rabbit anti-DDK polyclonal antibody.