

Product datasheet for TA500465

IRF3 Mouse Monoclonal Antibody [Clone ID: OTI5D2]

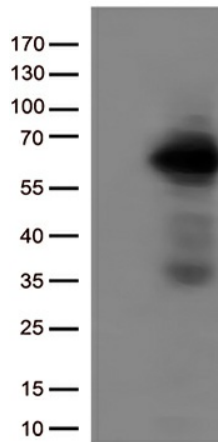
Product data:

Product Type:	Primary Antibodies
Clone Name:	OTI5D2
Applications:	IHC, WB
Recommend Dilution:	WB 1:2000 IHC 1:50
Reactivity:	Human, Monkey
Host:	Mouse
Isotype:	IgG2b
Clonality:	Monoclonal
Immunogen:	Full-length protein expressed in 293T cell transfected with human IRF3 expression vector
Formulation:	PBS (pH 7.3) containing 1% BSA, 50% glycerol and 0.02% sodium azide.
Concentration:	1 mg/ml
Purification:	Purified from mouse ascites fluids or tissue culture supernatant by affinity chromatography (protein A/G)
Predicted Protein Size:	47.2 kDa
Gene Name:	interferon regulatory factor 3
Database Link:	NP_001562 Entrez Gene 718970 Monkey Entrez Gene 3661 Human
Background:	IRF3 encodes interferon regulatory factor 3, a member of the interferon regulatory transcription factor (IRF) family. IRF3 is found in an inactive cytoplasmic form that upon serine/threonine phosphorylation forms a complex with CREBBP. This complex translocates to the nucleus and activates the transcription of interferons alpha and beta, as well as other interferon-induced genes.
Synonyms:	interferon regulatory factor 3; MGC94729
Protein Families:	Druggable Genome, Transcription Factors
Protein Pathways:	Cytosolic DNA-sensing pathway, RIG-I-like receptor signaling pathway, Toll-like receptor signaling pathway

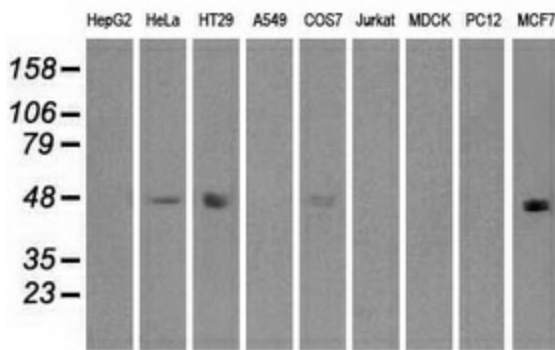


[View online »](#)

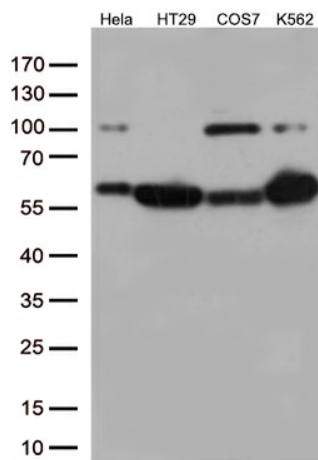
Product images:



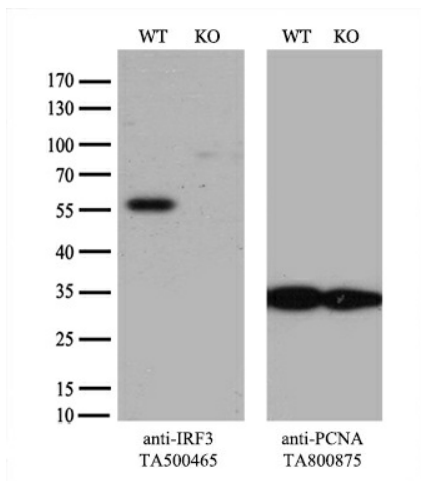
HEK293T cells were transfected with the pCMV6-ENTRY control (Left lane) or pCMV6-ENTRY IRF3 ([RC209951], Right lane) cDNA for 48 hrs and lysed. Equivalent amounts of cell lysates (5 ug per lane) were separated by SDS-PAGE and immunoblotted with anti-IRF3 (1:500).



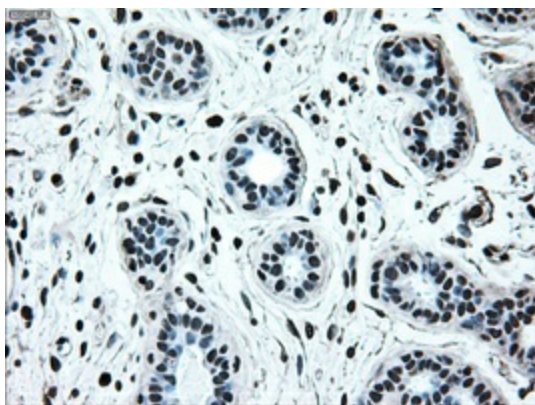
Western blot analysis of extracts (35ug) from 9 different cell lines by using anti-IRF3 monoclonal antibody.



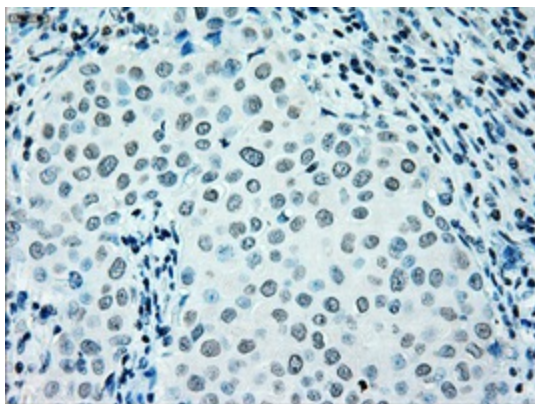
Western blot analysis of extracts (35ug) from 4 different cell lines and human plasma by using anti-IRF3 monoclonal antibody (1:500).



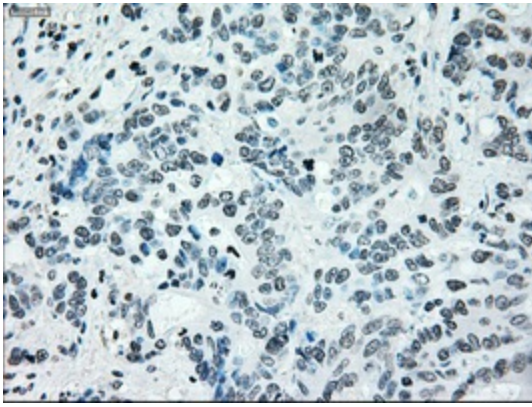
Equivalent amounts of cell lysates (10 ug per lane) of wild-type HeLa cells (WT, Cat# LC810HELA) and IRF3-Knockout HeLa cells (KO, Cat# [LC833375]) were separated by SDS-PAGE and immunoblotted with anti-IRF3 monoclonal antibody TA500465 (1:500). Then the blotted membrane was stripped and reprobed with anti-PCNA antibody as a loading control.



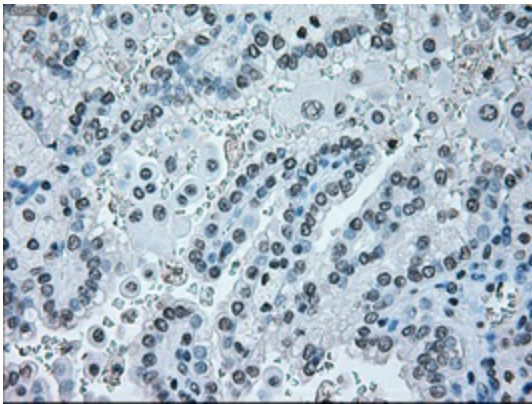
Immunohistochemical staining of paraffin-embedded breast tissue within the normal limits using anti-IRF3 mouse monoclonal antibody. (Heat-induced epitope retrieval by 10mM citric buffer, pH6.0, 100°C for 10min, TA500465, Dilution 1:50)



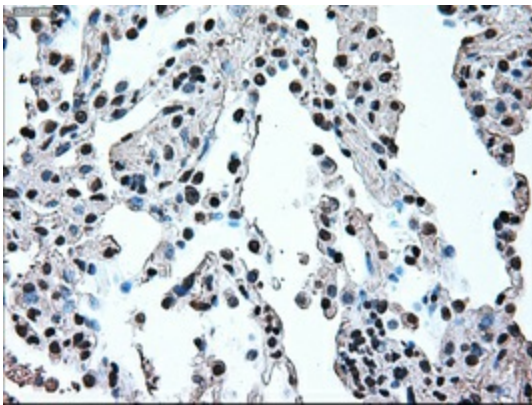
Immunohistochemical staining of paraffin-embedded Adenocarcinoma of breast tissue using anti-IRF3 mouse monoclonal antibody. (Heat-induced epitope retrieval by 10mM citric buffer, pH6.0, 100°C for 10min, TA500465, Dilution 1:50)



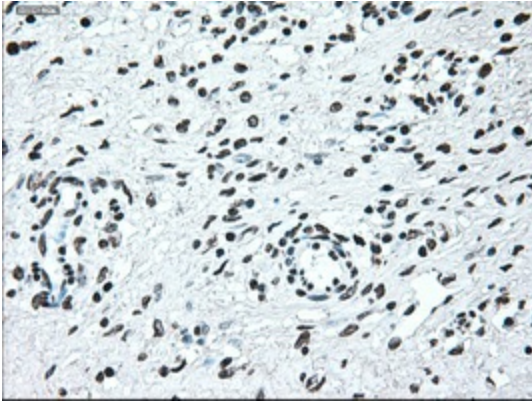
Immunohistochemical staining of paraffin-embedded Adenocarcinoma of colon tissue using anti-IRF3 mouse monoclonal antibody. (Heat-induced epitope retrieval by 10mM citric buffer, pH6.0, 100°C for 10min, TA500465, Dilution 1:50)



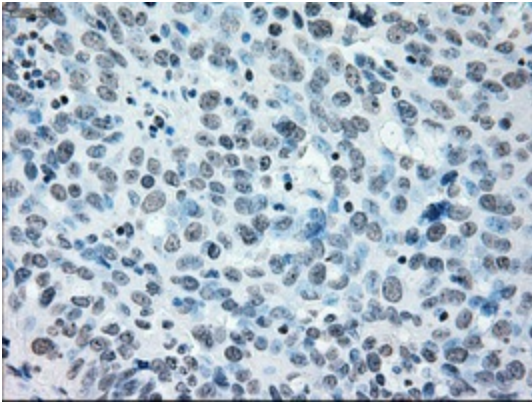
Immunohistochemical staining of paraffin-embedded Carcinoma of kidney tissue using anti-IRF3 mouse monoclonal antibody. (Heat-induced epitope retrieval by 10mM citric buffer, pH6.0, 100°C for 10min, TA500465, Dilution 1:50)



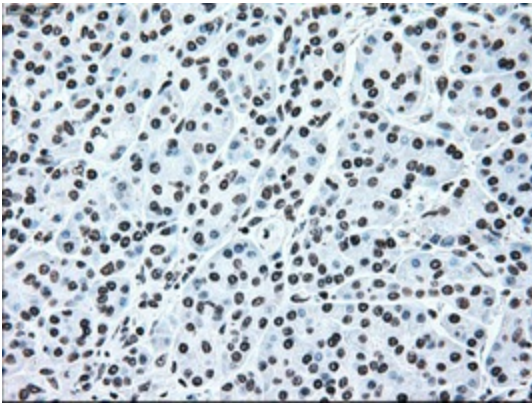
Immunohistochemical staining of paraffin-embedded lung tissue within the normal limits using anti-IRF3 mouse monoclonal antibody. (Heat-induced epitope retrieval by 10mM citric buffer, pH6.0, 100°C for 10min, TA500465, Dilution 1:50)



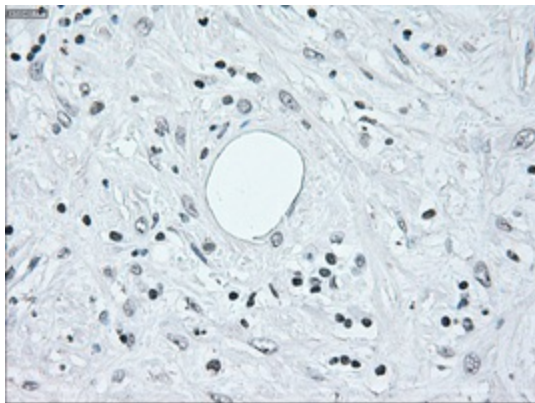
Immunohistochemical staining of paraffin-embedded Ovary tissue within the normal limits using anti-IRF3 mouse monoclonal antibody. (Heat-induced epitope retrieval by 10mM citric buffer, pH6.0, 100°C for 10min, TA500465, Dilution 1:50)



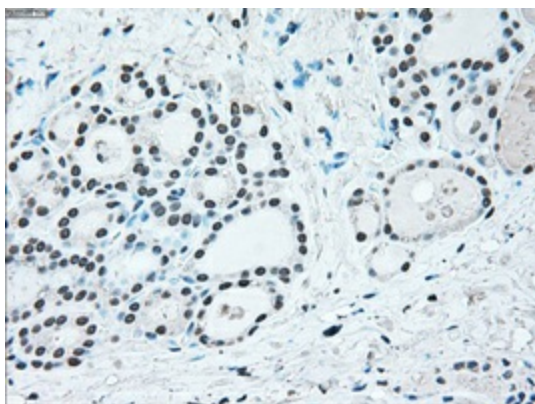
Immunohistochemical staining of paraffin-embedded Adenocarcinoma of ovary tissue using anti-IRF3 mouse monoclonal antibody. (Heat-induced epitope retrieval by 10mM citric buffer, pH6.0, 100°C for 10min, TA500465, Dilution 1:50)



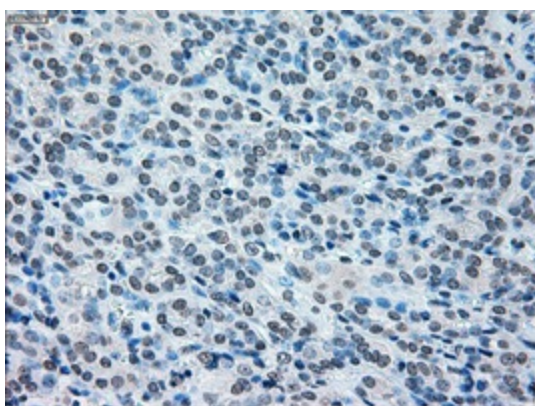
Immunohistochemical staining of paraffin-embedded pancreas tissue within the normal limits using anti-IRF3 mouse monoclonal antibody. (Heat-induced epitope retrieval by 10mM citric buffer, pH6.0, 100°C for 10min, TA500465, Dilution 1:50)



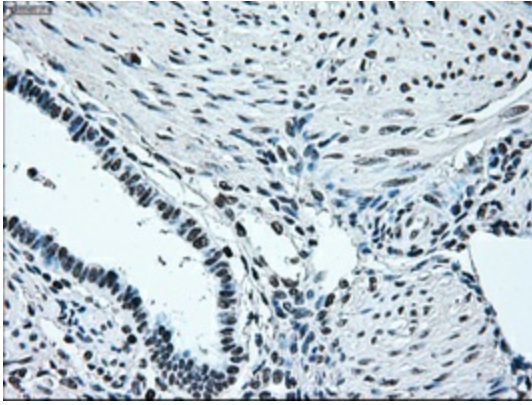
Immunohistochemical staining of paraffin-embedded Carcinoma of pancreas tissue using anti-IRF3 mouse monoclonal antibody. (Heat-induced epitope retrieval by 10mM citric buffer, pH6.0, 100°C for 10min, TA500465, Dilution 1:50)



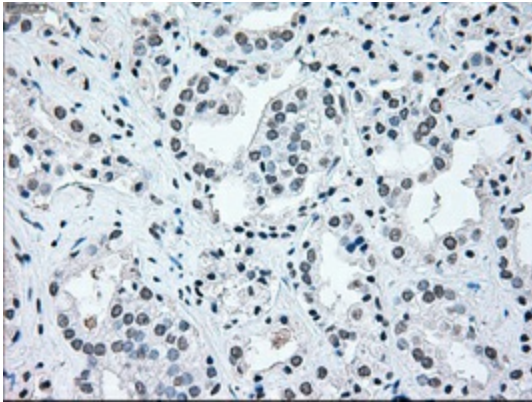
Immunohistochemical staining of paraffin-embedded thyroid tissue within the normal limits using anti-IRF3 mouse monoclonal antibody. (Heat-induced epitope retrieval by 10mM citric buffer, pH6.0, 100°C for 10min, TA500465, Dilution 1:50)



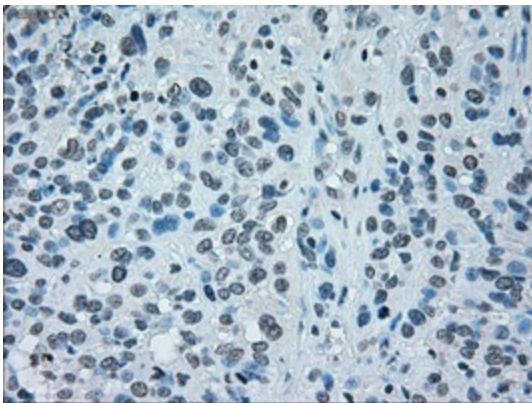
Immunohistochemical staining of paraffin-embedded Carcinoma of thyroid tissue using anti-IRF3 mouse monoclonal antibody. (Heat-induced epitope retrieval by 10mM citric buffer, pH6.0, 100°C for 10min, TA500465, Dilution 1:50)



Immunohistochemical staining of paraffin-embedded endometrium tissue within the normal limits using anti-IRF3 mouse monoclonal antibody. (Heat-induced epitope retrieval by 10mM citric buffer, pH6.0, 100°C for 10min, TA500465, Dilution 1:50)



Immunohistochemical staining of paraffin-embedded Carcinoma of prostate tissue using anti-IRF3 mouse monoclonal antibody. (Heat-induced epitope retrieval by 10mM citric buffer, pH6.0, 100°C for 10min, TA500465, Dilution 1:50)



Immunohistochemical staining of paraffin-embedded Carcinoma of bladder tissue using anti-IRF3 mouse monoclonal antibody. (Heat-induced epitope retrieval by 10mM citric buffer, pH6.0, 100°C for 10min, TA500465, Dilution 1:50)