

## Product datasheet for TA500392

### OXR1 Mouse Monoclonal Antibody [Clone ID: OT1F3]

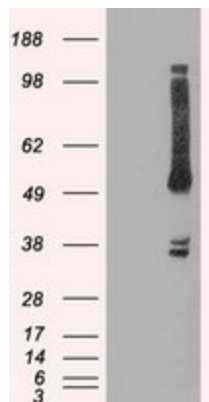
#### Product data:

Product Type:	Primary Antibodies
Clone Name:	OT1F3
Applications:	IHC, WB
Recommend Dilution:	WB 1:1000, IHC 1:150
Reactivity:	Human, Monkey, Rat, Dog
Host:	Mouse
Isotype:	IgG1
Clonality:	Monoclonal
Immunogen:	Full-length protein expressed in 293T cell transfected with human OXR1 expression vector
Formulation:	PBS (pH 7.3) containing 1% BSA, 50% glycerol and 0.02% sodium azide.
Concentration:	1.28 mg/ml
Purification:	Purified from mouse ascites fluids or tissue culture supernatant by affinity chromatography (protein A/G)
Predicted Protein Size:	57.8 kDa
Gene Name:	oxidative stress responsive kinase 1
Database Link:	<a href="#">NP_005100</a> <a href="#">Entrez Gene 316064</a> <a href="#">RatEntrez Gene 607809</a> <a href="#">DogEntrez Gene 696362</a> <a href="#">MonkeyEntrez Gene 9943</a> <a href="#">Human</a>
Background:	The product of this gene belongs to the Ser/Thr protein kinase family of proteins. It regulates downstream kinases in response to environmental stress, and may play a role in regulating the actin cytoskeleton. Regulates downstream kinases in response to environmental stress. May also have a function in regulating the actin cytoskeleton
Synonyms:	OSR1
Protein Families:	Druggable Genome, Protein Kinase

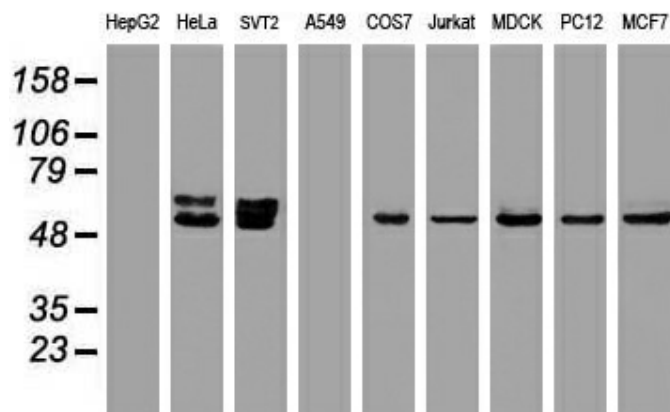


[View online »](#)

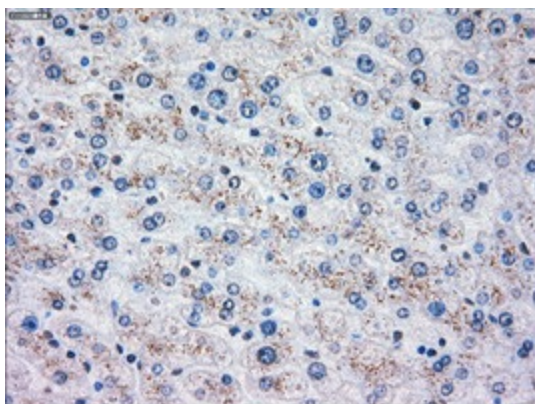
Product images:



HEK293T cells were transfected with the pCMV6-ENTRY control (Left lane) or pCMV6-ENTRY OXS1 ([RC200396], Right lane) cDNA for 48 hrs and lysed. Equivalent amounts of cell lysates (5 ug per lane) were separated by SDS-PAGE and immunoblotted with anti-OXS1. Positive lysates [LY401573] (100ug) and [LC401573] (20ug) can be purchased separately from OriGene.



Western blot analysis of extracts (35ug) from 9 different cell lines by using anti-OXS1 monoclonal antibody.



Immunohistochemical staining of paraffin-embedded Human liver tissue within the normal limits using anti-OXS1 mouse monoclonal antibody. (Heat-induced epitope retrieval by 10mM citric buffer, pH6.0, 100°C for 10min, TA500392)