

Product datasheet for **TA500329**

GAD67 (GAD1) Mouse Monoclonal Antibody [Clone ID: OTI3G9]

Product data:

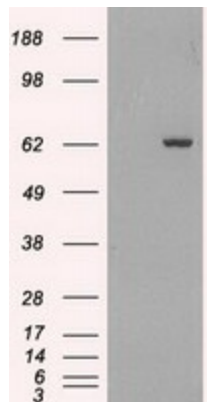
Product Type:	Primary Antibodies
Clone Name:	OTI3G9
Applications:	IF, IHC, IP, WB
Recommend Dilution:	WB 1:1000-1:2000, IHC 1:50, IF 1:50, IP: 4ug/mL
Reactivity:	Human, Monkey
Host:	Mouse
Isotype:	IgG2b
Clonality:	Monoclonal
Immunogen:	Full length human recombinant protein of human GAD1 (NP_000808) produced in HEK293T cell.
Formulation:	PBS (pH 7.3) containing 1% BSA, 50% glycerol and 0.02% sodium azide.
Concentration:	0.46 mg/ml
Purification:	Purified from mouse ascites fluids or tissue culture supernatant by affinity chromatography (protein A/G)
Predicted Protein Size:	66.9 kDa
Gene Name:	glutamate decarboxylase 1
Database Link:	<u>NP_000808</u> <u>Entrez Gene 613030</u> <u>Monkey</u> <u>Entrez Gene 2571</u> <u>Human</u>
Background:	This gene encodes one of several forms of glutamic acid decarboxylase, identified as a major autoantigen in insulin-dependent diabetes. The enzyme encoded is responsible for catalyzing the production of gamma-aminobutyric acid from L-glutamic acid. A pathogenic role for this enzyme has been identified in the human pancreas since it has been identified as an autoantigen and an autoreactive T cell target in insulin-dependent diabetes. This gene may also play a role in the stiff man syndrome. Deficiency in this enzyme has been shown to lead to pyridoxine dependency with seizures. Alternative splicing of this gene results in two products, the predominant 67-kD form and a less-frequent 25-kD form.
Synonyms:	CPSQ1; GAD; SCP
Protein Families:	Druggable Genome



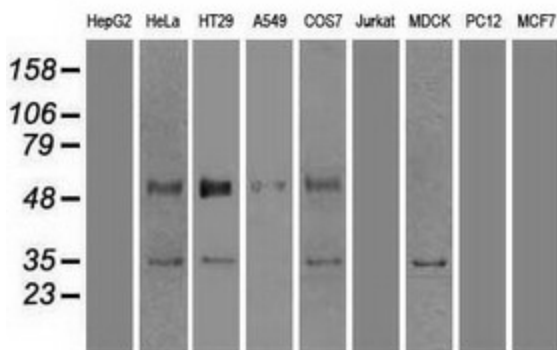
[View online »](#)

Protein Pathways:

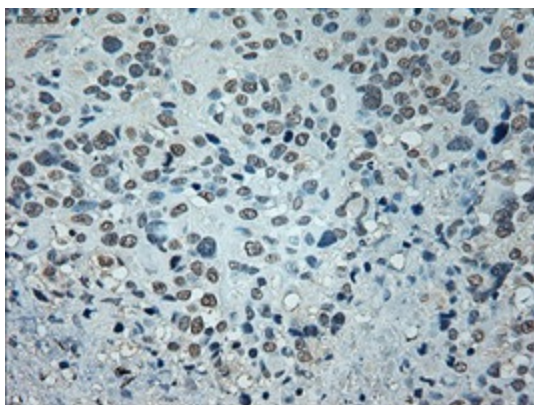
Alanine, aspartate and glutamate metabolism, beta-Alanine metabolism, Butanoate metabolism, Metabolic pathways, Taurine and hypotaurine metabolism, Type I diabetes mellitus

Product images:


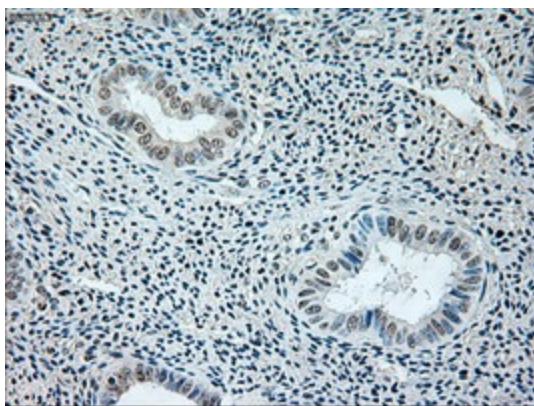
HEK293T cells were transfected with the pCMV6-ENTRY control (Left lane) or pCMV6-ENTRY GAD1 [RC207226], Right lane) cDNA for 48 hrs and lysed. Equivalent amounts of cell lysates (5 ug per lane) were separated by SDS-PAGE and immunoblotted with anti-GAD1. Positive lysates [LY400290] (100ug) and [LC400290] (20ug) can be purchased separately from OriGene.



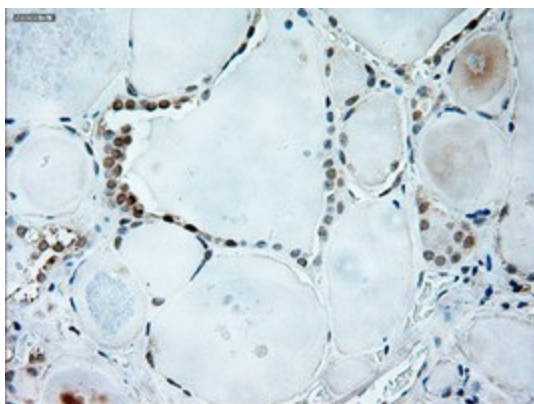
Western blot analysis of extracts (35ug) from 9 different cell lines by using anti-GAD1 monoclonal antibody.



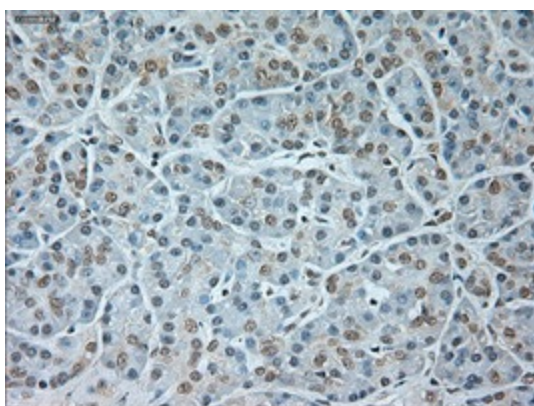
Immunohistochemical staining of paraffin-embedded Carcinoma of Human bladder tissue using anti-GAD1 mouse monoclonal antibody. (Heat-induced epitope retrieval by 10mM citric buffer, pH6.0, 100°C for 10min, TA500329)



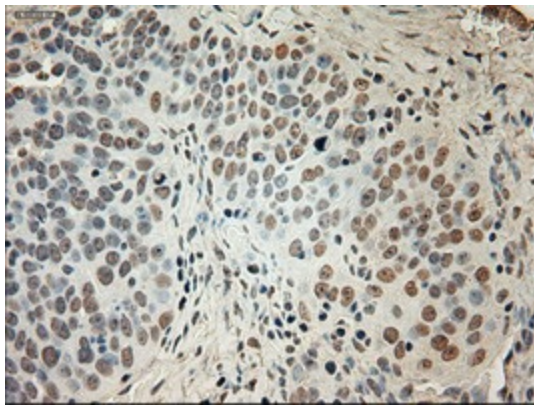
Immunohistochemical staining of paraffin-embedded Human endometrium tissue within the normal limits using anti-GAD1 mouse monoclonal antibody. (Heat-induced epitope retrieval by 10mM citric buffer, pH6.0, 100°C for 10min, TA500329)



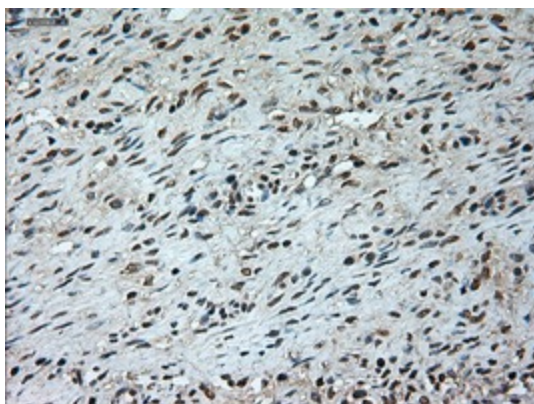
Immunohistochemical staining of paraffin-embedded Human thyroid tissue within the normal limits using anti-GAD1 mouse monoclonal antibody. (Heat-induced epitope retrieval by 10mM citric buffer, pH6.0, 100°C for 10min, TA500329)



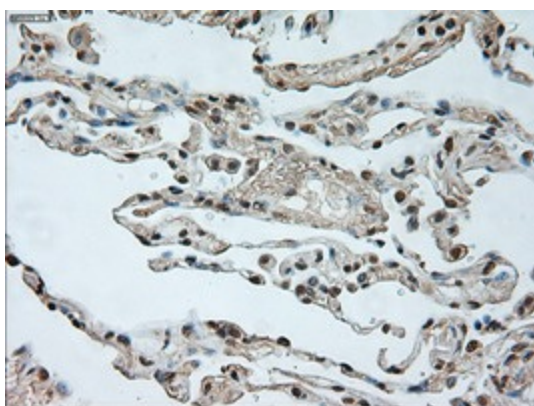
Immunohistochemical staining of paraffin-embedded Human pancreas tissue within the normal limits using anti-GAD1 mouse monoclonal antibody. (Heat-induced epitope retrieval by 10mM citric buffer, pH6.0, 100°C for 10min, TA500329)



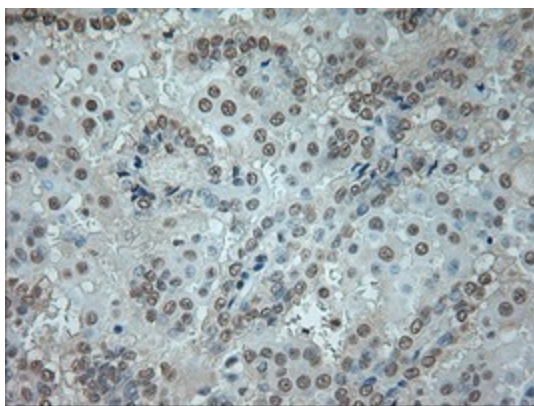
Immunohistochemical staining of paraffin-embedded Adenocarcinoma of Human ovary tissue using anti-GAD1 mouse monoclonal antibody. (Heat-induced epitope retrieval by 10mM citric buffer, pH6.0, 100°C for 10min, TA500329)



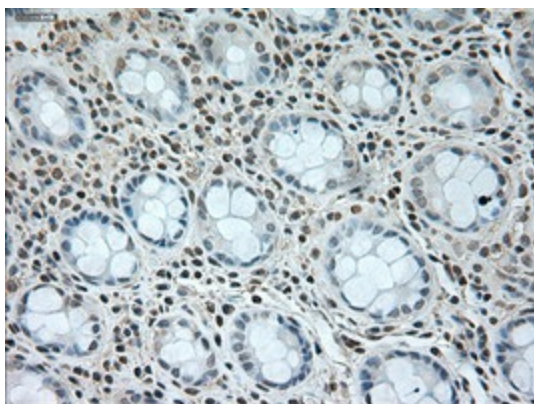
Immunohistochemical staining of paraffin-embedded Human Ovary tissue within the normal limits using anti-GAD1 mouse monoclonal antibody. (Heat-induced epitope retrieval by 10mM citric buffer, pH6.0, 100°C for 10min, TA500329)



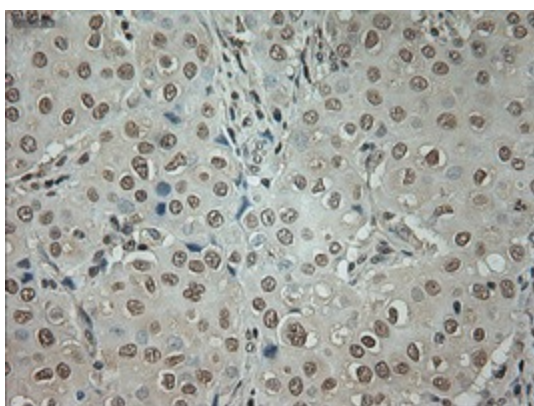
Immunohistochemical staining of paraffin-embedded Human lung tissue within the normal limits using anti-GAD1 mouse monoclonal antibody. (Heat-induced epitope retrieval by 10mM citric buffer, pH6.0, 100°C for 10min, TA500329)



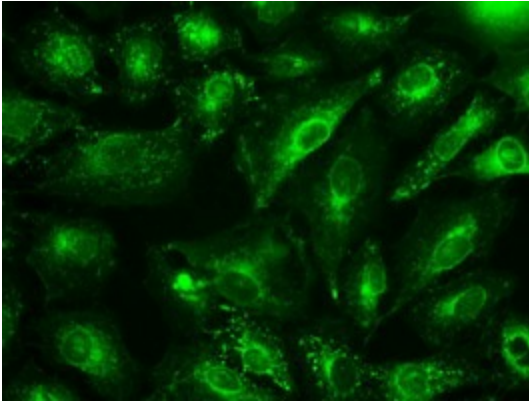
Immunohistochemical staining of paraffin-embedded Carcinoma of Human kidney tissue using anti-GAD1 mouse monoclonal antibody. (Heat-induced epitope retrieval by 10mM citric buffer, pH6.0, 100°C for 10min, TA500329)



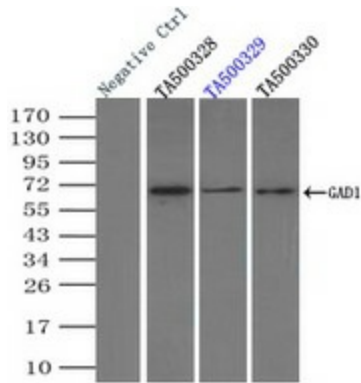
Immunohistochemical staining of paraffin-embedded Human colon tissue within the normal limits using anti-GAD1 mouse monoclonal antibody. (Heat-induced epitope retrieval by 10mM citric buffer, pH6.0, 100°C for 10min, TA500329)



Immunohistochemical staining of paraffin-embedded Adenocarcinoma of Human breast tissue using anti-GAD1 mouse monoclonal antibody. (Heat-induced epitope retrieval by 10mM citric buffer, pH6.0, 100°C for 10min, TA500329)



Immunofluorescent staining of A549 cells using anti-GAD1 mouse monoclonal antibody (TA500329).



Immunoprecipitation of GAD1 by using TrueMab monoclonal anti-GAD1 antibodies (Negative control: IP without adding anti-GAD1 antibody.). For each experiment, 500ul of DDK tagged GAD1 overexpression lysates (at 1:5 dilution with HEK293T lysate), 2ug of anti-GAD1 antibody and 20ul (0.1mg) of goat anti-mouse conjugated magnetic beads were mixed and incubated overnight. After extensive wash to remove any non-specific binding, the immuno-precipitated products were analyzed with rabbit anti-DDK polyclonal antibody.