

## Product datasheet for TA500118

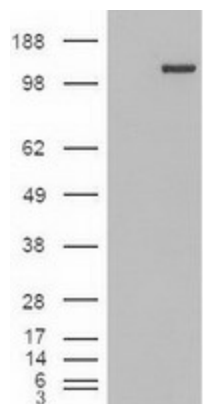
### TIF1 gamma (TRIM33) Mouse Monoclonal Antibody [Clone ID: OTI6B7]

#### Product data:

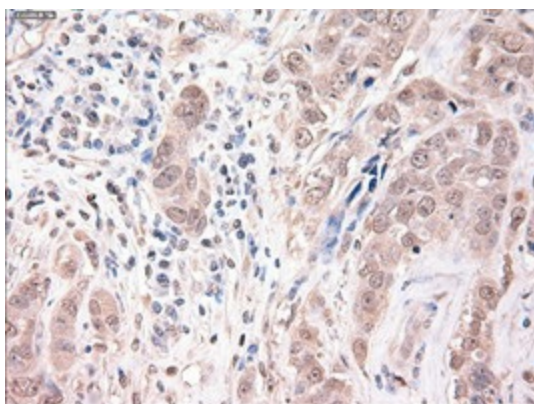
Product Type:	Primary Antibodies
Clone Name:	OTI6B7
Applications:	IF, IHC, WB
Recommend Dilution:	WB 1:500, IHC 1:50, IF 1:100
Reactivity:	Human
Host:	Mouse
Isotype:	IgG2b
Clonality:	Monoclonal
Immunogen:	Human recombinant protein fragment corresponding to amino acids 887-1046 of human Trim33 (NP_056990) produced in E.coli.
Formulation:	PBS (pH 7.3) containing 1% BSA, 50% glycerol and 0.02% sodium azide.
Concentration:	0.85 mg/ml
Purification:	Purified from mouse ascites fluids or tissue culture supernatant by affinity chromatography (protein A/G)
Predicted Protein Size:	122.5 kDa
Gene Name:	tripartite motif containing 33
Database Link:	<a href="#">NP_056990 Entrez Gene 51592 Human</a>
Background:	The protein encoded by this gene is thought to be a transcriptional corepressor. However, molecules that interact with this protein have not yet been identified. The protein is a member of the tripartite motif family. This motif includes three zinc-binding domains, a RING, a B-box type 1 and a B-box type 2, and a coiled-coil region. Three alternatively spliced transcript variants for this gene have been described, however, the full-length nature of one variant has not been determined.
Synonyms:	ECTO; PTC7; RFG7; TF1G; TIF1G; TIF1GAMMA; TIFGAMMA
Protein Families:	Druggable Genome, ES Cell Differentiation/IPS, Protein Kinase, Transcription Factors



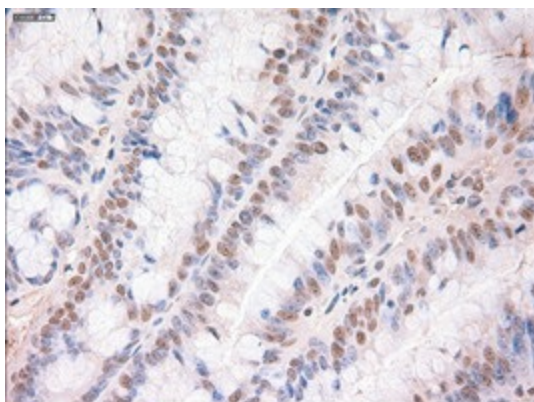
[View online »](#)

**Product images:**

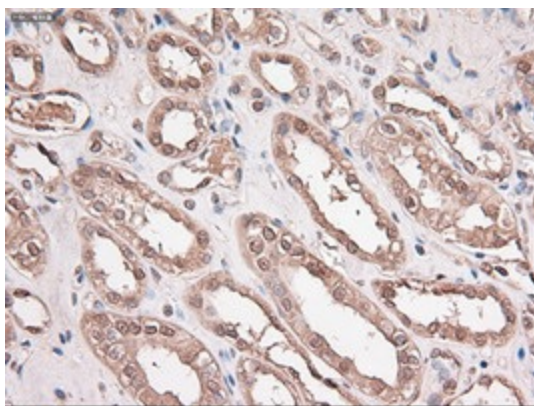
HEK293T cells were transfected with the pCMV6-ENTRY control (Left lane) or pCMV6-ENTRY Trim33 ([RC212497], Right lane) cDNA for 48 hrs and lysed. Equivalent amounts of cell lysates (5 ug per lane) were separated by SDS-PAGE and immunoblotted with anti-Trim33. Positive lysates [LY414337] (100ug) and [LC414337] (20ug) can be purchased separately from OriGene.



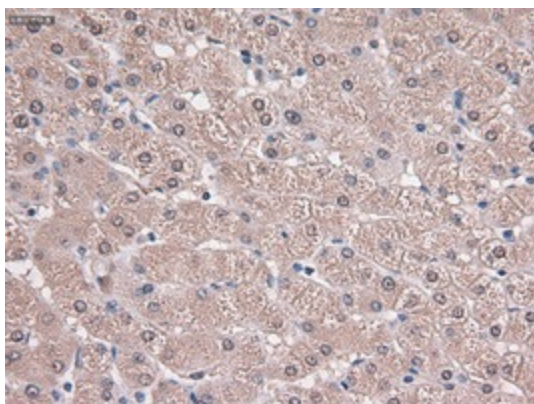
Immunohistochemical staining of paraffin-embedded Adenocarcinoma of Human breast tissue using anti-Trim33 mouse monoclonal antibody. (Heat-induced epitope retrieval by 10mM citric buffer, pH6.0, 100°C for 10min, TA500118)



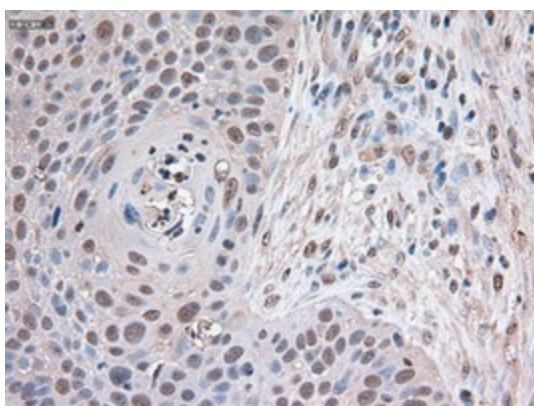
Immunohistochemical staining of paraffin-embedded Adenocarcinoma of Human colon tissue using anti-Trim33 mouse monoclonal antibody. (Heat-induced epitope retrieval by 10mM citric buffer, pH6.0, 100°C for 10min, TA500118)



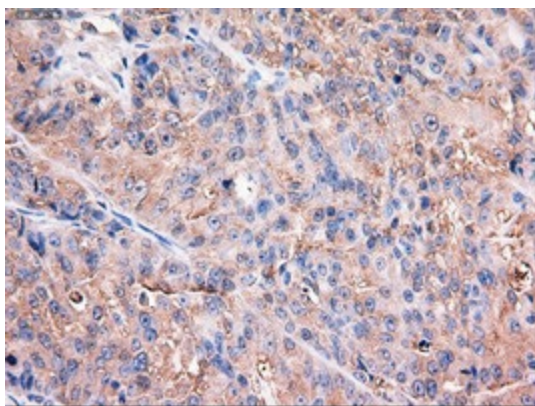
Immunohistochemical staining of paraffin-embedded Human Kidney tissue within the normal limits using anti-Trim33 mouse monoclonal antibody. (Heat-induced epitope retrieval by 10mM citric buffer, pH6.0, 100°C for 10min, TA500118)



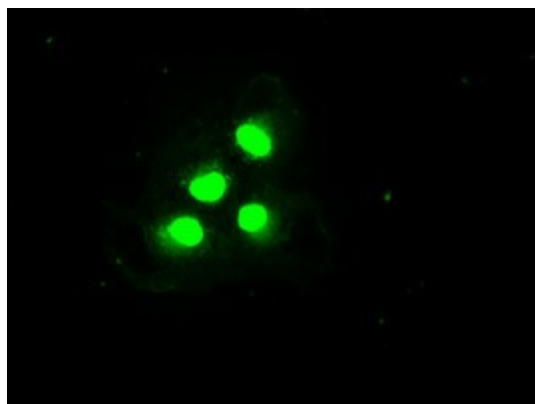
Immunohistochemical staining of paraffin-embedded Human liver tissue within the normal limits using anti-Trim33 mouse monoclonal antibody. (Heat-induced epitope retrieval by 10mM citric buffer, pH6.0, 100°C for 10min, TA500118)



Immunohistochemical staining of paraffin-embedded Carcinoma of Human lung tissue using anti-Trim33 mouse monoclonal antibody. (Heat-induced epitope retrieval by 10mM citric buffer, pH6.0, 100°C for 10min, TA500118)



Immunohistochemical staining of paraffin-embedded Adenocarcinoma of Human ovary tissue using anti-Trim33 mouse monoclonal antibody. (Heat-induced epitope retrieval by 10mM citric buffer, pH6.0, 100°C for 10min, TA500118)



Anti-Trim33 mouse monoclonal antibody (TA500118) immunofluorescent staining of COS7 cells transiently transfected by pCMV6-ENTRY Trim33 ([RC212497]).