

Product datasheet for **TA347064**

beta V Tubulin (TUBB) Mouse Monoclonal Antibody [Clone ID: 1E1-E8-H4]

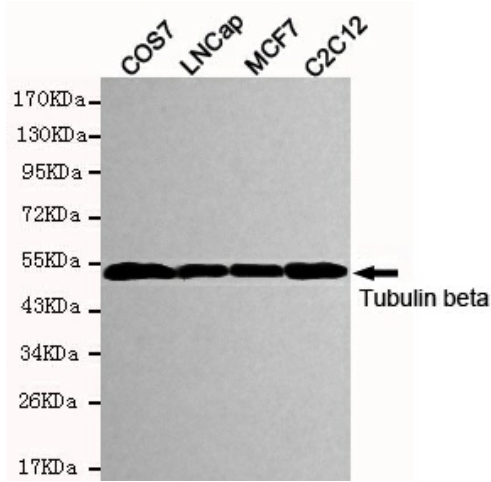
Product data:

Product Type:	Primary Antibodies
Clone Name:	1E1-E8-H4
Applications:	IF, WB
Recommend Dilution:	WB: 1:5000, IF: 1:500
Reactivity:	Goat, Hamster, Human, Monkey, Mouse, Rat, Chlamydomonas
Host:	Mouse
Isotype:	IgG1
Clonality:	Monoclonal
Immunogen:	The immunogen for TUBB antibody: purified recombinant human Tubulin beta protein fragments expressed in E.coli.
Formulation:	Purified mouse monoclonal in PBS(pH 7.4) containing with 0.02% sodium azide, 0.1mg/ml BSA and 50% glycerol.
Purification:	Affinity purified
Predicted Protein Size:	55 kDa
Gene Name:	tubulin beta class I
Database Link:	NP_821133 Entrez Gene 574113 Monkey Entrez Gene 203068 Human
Background:	Tubulin is the major constituent of microtubules. It binds two moles of GTP, one at an exchangeable site on the beta chain and one at a non-exchangeable site on the alpha-chain.
Synonyms:	CDCBM6; CSCSC1; M40; OK; SW-cl.56; TUBB1; TUBB5
Protein Families:	Druggable Genome
Protein Pathways:	Gap junction, Pathogenic Escherichia coli infection

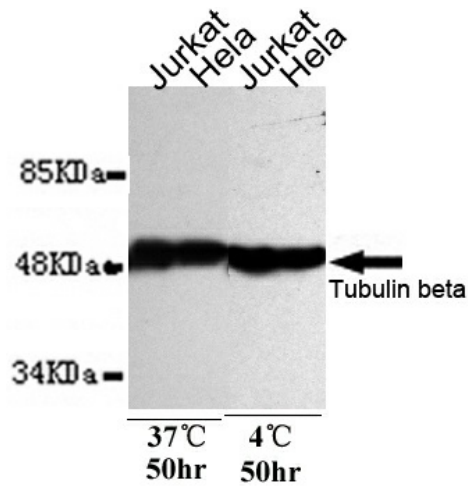


[View online »](#)

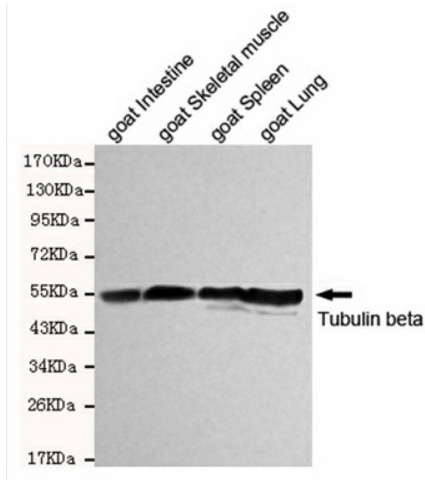
Product images:



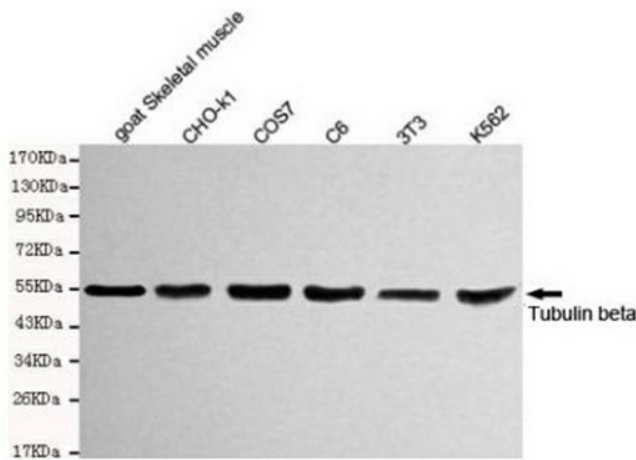
Western blot detection of Tubulin beta in COS7, LNCap, MCF7 and C2C12 cell lysates and using Tubulin beta mouse mAb (1:5000 diluted). Predicted band size: 55KDa. Observed band size: 55KDa.



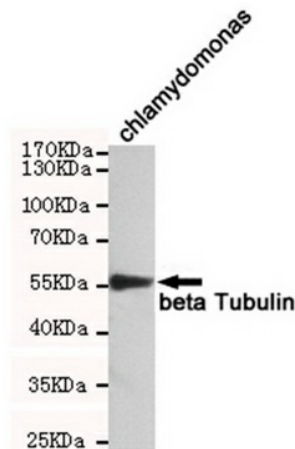
Tubulin beta antibody's stability test under 37°C 50 hours compare to 4°C 50 hours.



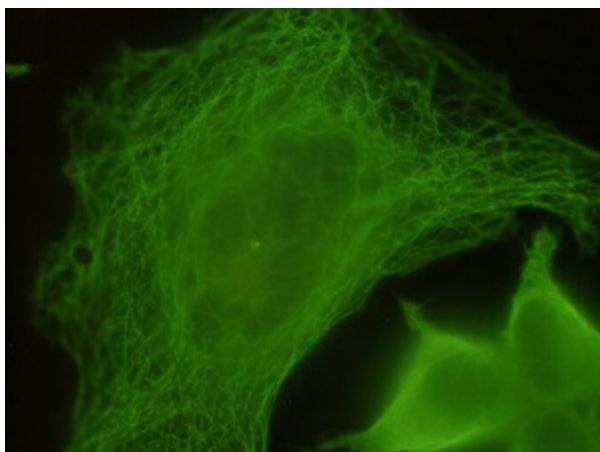
Western blot detection of Tubulin beta in goat intestine, goat skeletal muscle, goat spleen and goat lung cell lysates using Tubulin beta mouse mAb (1:5000-1:10000 diluted). Predicted band size: 55KDa. Observed band size: 55KDa.



Western blot detection of Tubulin beta in Goat skeletal muscle, CHO-k1, COS7, C6, 3T3 and K562 cell lysates using Tubulin beta mouse mAb (1:5000 diluted). Predicted band size: 55KDa. Observed band size: 55KDa. Exposure time: 10sec.



Western blot detection of beta Tubulin in Chlamydomonas cell lysates using beta Tubulin mouse mAb (1:1000 diluted). Predicted band size: 55KDa. Observed band size: 55KDa.



Immunocytochemistry staining of HeLa cells fixed with 4% paraformaldehyde and using anti-Tubulin beta mouse mAb (dilution 1:500).