

Product datasheet for TA346985

KDM5C Mouse Monoclonal Antibody [Clone ID: 2E4-E1-G8]

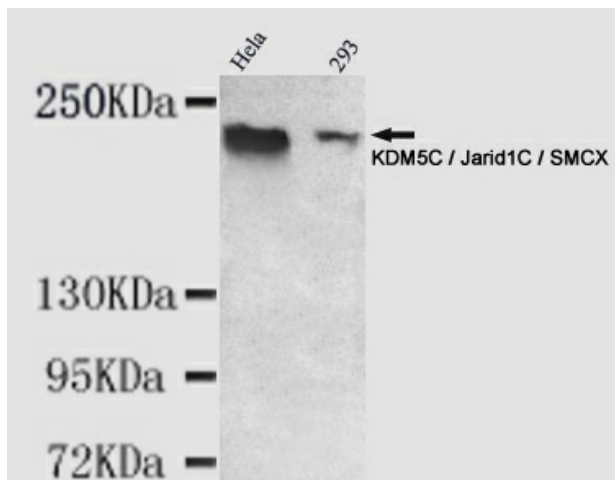
Product data:

Product Type:	Primary Antibodies
Clone Name:	2E4-E1-G8
Applications:	IF, WB
Recommend Dilution:	WB: 1:1000, IF: 1:150
Reactivity:	Human
Host:	Mouse
Isotype:	IgG2a
Clonality:	Monoclonal
Immunogen:	The immunogen for KDM5C antibody: purified recombinant human KDM5C / Jarid1C / SMCX protein fragments expressed in E.coli
Formulation:	Purified mouse monoclonal in buffer containing 0.1M Tris-Glycine (pH 7.4, 150 mM NaCl) with 0.02% sodium azide, 50% glycerol
Purification:	Affinity purified
Predicted Protein Size:	220 kDa
Gene Name:	lysine demethylase 5C
Database Link:	NP_004178 Entrez Gene 8242 Human
Background:	This gene is a member of the SMCY homolog family and encodes a protein with one ARID domain, one JmjC domain, one JmjN domain and two PHD-type zinc fingers. The DNA-binding motifs suggest this protein is involved in the regulation of transcription and chromatin remodeling. Mutations in this gene have been associated with X-linked mental retardation. Alternative splicing results in multiple transcript variants.
Synonyms:	DXS1272E; JARID1C; MRX13; MRXJ; MRXSCJ; MRXSJ; SMCX; XE169
Note:	Detects ~38kDa. Can run up to 45kDa on SDS Page
Protein Families:	Druggable Genome, Transcription Factors

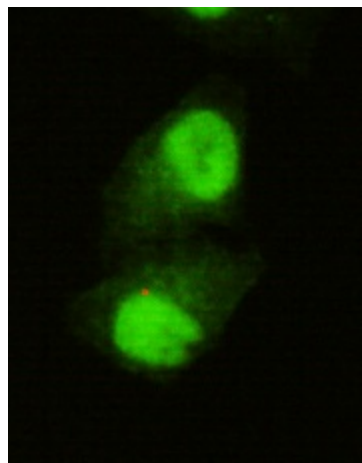


[View online »](#)

Product images:



Western blot detection of KDM5C / Jarid1C / SMCX in HeLa and 293 cell lysates using KDM5C / Jarid1C / SMCX mouse mAb (1:1000 diluted). Predicted band size: 176KDa. Observed band size: 220KDa.



Immunocytochemistry of HeLa cells using anti-KDM5C / Jarid1C / SMCX mouse mAb diluted 1:150.