

Product datasheet for TA346981

CD61 (ITGB3) Mouse Monoclonal Antibody [Clone ID: 3C12-G2-E4-H9]

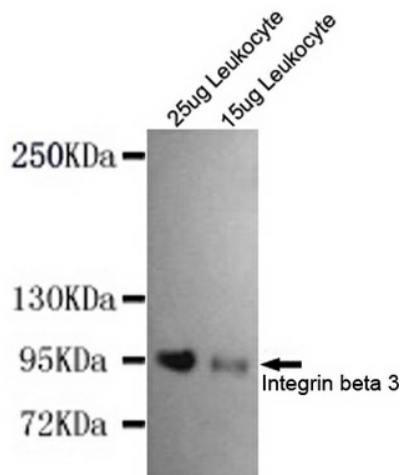
Product data:

Product Type:	Primary Antibodies
Clone Name:	3C12-G2-E4-H9
Applications:	WB
Recommend Dilution:	WB: 1:1000
Reactivity:	Human
Host:	Mouse
Isotype:	IgG1
Clonality:	Monoclonal
Immunogen:	The immunogen for ITGB3 antibody: purified recombinant human Integrin beta 3(N-terminus) protein fragments expressed in E.coli.
Formulation:	Purified mouse monoclonal in PBS(pH 7.4) containing with 0.02% sodium azide and 50% glycerol.
Purification:	Affinity purified
Predicted Protein Size:	110 kDa
Gene Name:	integrin subunit beta 3
Database Link:	NP_000203 Entrez Gene 3690 Human
Background:	The ITGB3 protein product is the integrin beta chain beta 3. Integrins are integral cell-surface proteins composed of an alpha chain and a beta chain. A given chain may combine with multiple partners resulting in different integrins. Integrin beta 3 is found along with the alpha IIb chain in platelets. Integrins are known to participate in cell adhesion as well as cell-surface mediated signalling. [provided by RefSeq, Jul 2008]
Synonyms:	BDPLT2; BDPLT16; CD61; GP3A; GPIIIa; GT
Protein Families:	Druggable Genome, ES Cell Differentiation/IPS, Transmembrane
Protein Pathways:	Arrhythmogenic right ventricular cardiomyopathy (ARVC), Dilated cardiomyopathy, ECM-receptor interaction, Focal adhesion, Hematopoietic cell lineage, Hypertrophic cardiomyopathy (HCM), Regulation of actin cytoskeleton



[View online »](#)

Product images:



Western blot detection of Integrin beta 3 (N-terminus) in 15ug and 25ug Leukocyte whole cell lysate using Integrin beta 3 (N-terminus) mouse mAb (1:1000 diluted). Predicted band size: 110KDa. Observed band size: 110KDa.