

Product datasheet for **TA346954**

GRAP2 Mouse Monoclonal Antibody [Clone ID: 5C7-F4-E7]

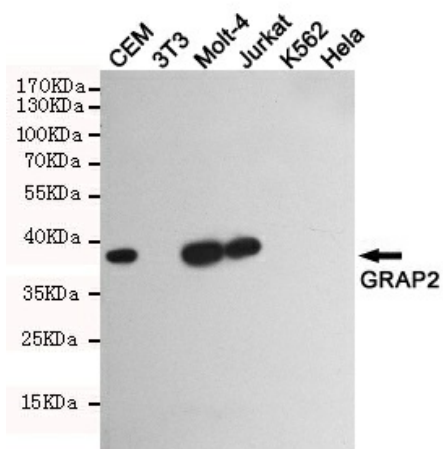
Product data:

Product Type:	Primary Antibodies
Clone Name:	5C7-F4-E7
Applications:	WB
Recommend Dilution:	WB: 1:1000
Reactivity:	Human
Host:	Mouse
Isotype:	IgG2b
Clonality:	Monoclonal
Immunogen:	The immunogen for GRAP2 antibody: Recombinant protein of human GRAP2.
Formulation:	Purified mouse monoclonal antibody in PBS(pH 7.4) containing with 0.03% Proclin300 and 50% glycerol.
Purification:	Affinity purified
Gene Name:	GRB2-related adaptor protein 2
Database Link:	NP_004801 Entrez Gene 9402 Human
Background:	This gene encodes a member of the GRB2/Sem5/Drk family. This member is an adaptor-like protein involved in leukocyte-specific protein-tyrosine kinase signaling. Like its related family member, GRB2-related adaptor protein (GRAP), this protein contains an SH2 domain flanked by two SH3 domains. This protein interacts with other proteins, such as GRB2-associated binding protein 1 (GAB1) and the SLP-76 leukocyte protein (LCP2), through its SH3 domains. Transcript variants utilizing alternative polyA sites exist.
Synonyms:	GADS; GRAP-2; GRB2L; GRBLG; GrbX; Grf40; GRID; GRPL; Mona; P38
Protein Families:	Druggable Genome
Protein Pathways:	T cell receptor signaling pathway



[View online »](#)

Product images:



Western blot detection of GRAP2 in GRAP2 positive cell (CEM, Molt-4, Jurkat) and negative cell (3T3, K562, HeLa) lysates using GRAP2 mouse mAb (1:1000 diluted). Predicted band size: 38KDa. Observed band size: 38KDa.