

## Product datasheet for **TA346936**

### EEF2 Mouse Monoclonal Antibody [Clone ID: 4B3-G7-H5]

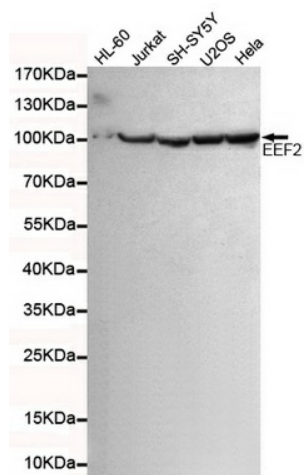
#### Product data:

Product Type:	Primary Antibodies
Clone Name:	4B3-G7-H5
Applications:	IF, WB
Recommend Dilution:	WB: 1:5000, IF: 1:200
Reactivity:	Human
Host:	Mouse
Isotype:	IgG2b
Clonality:	Monoclonal
Immunogen:	The immunogen for EEF2 antibody: purified recombinant human eEF2 protein fragments expressed in E.coli.
Formulation:	Purified mouse monoclonal in buffer containing 0.1M Tris-Glycine (pH 7.4, 150 mM NaCl) with 0.02% sodium azide, 50% glycerol
Purification:	Affinity purified
Predicted Protein Size:	95 kDa
Gene Name:	eukaryotic translation elongation factor 2
Database Link:	<a href="#">NP_001952 Entrez Gene 1938 Human</a>
Background:	This gene encodes a member of the GTP-binding translation elongation factor family. This protein is an essential factor for protein synthesis. It promotes the GTP-dependent translocation of the nascent protein chain from the A-site to the P-site of the ribosome. This protein is completely inactivated by EF-2 kinase phosphorylation.
Synonyms:	EEF-2; EF-2; EF2; SCA26

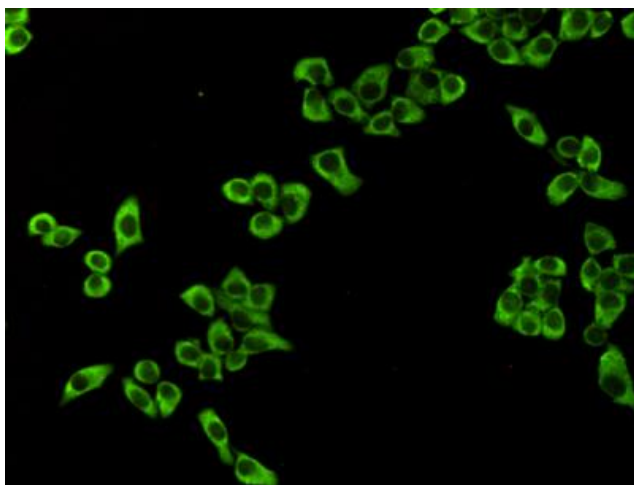


[View online »](#)

## Product images:



Western blot detection of eEF2 in HL-60, Jurkat, SHSY-5Y, U20S and HeLa cell lysates using eEF2 mouse mAb (1:5000 diluted). Predicted band size: 95KDa. Observed band size: 95KDa. Exposure time: 15s.



Immunocytochemistry staining of HeLa cells fixed with -20? Methanol and using anti-eEF2 mouse mAb (dilution 1:200).